

Top Ways to Clobber Your Collaborative (and How to Avoid Them)

Stacy Beaugh, Strategic By Nature, Inc.

RiversEdge West Riparian Restoration Conference

February 4, 2020



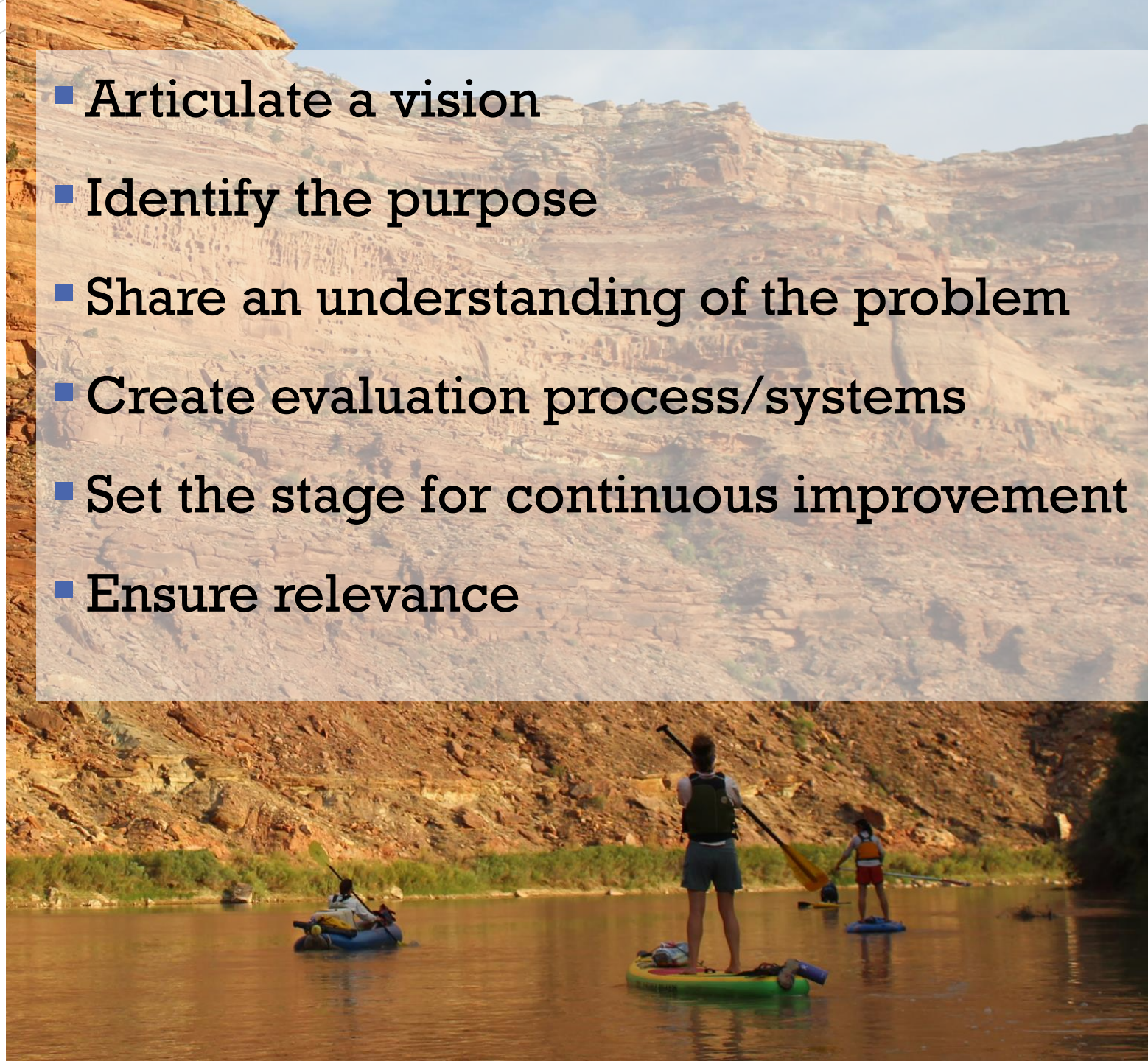
STRATEGIC BY
NATURE

People & Process



Know one knows
where this is
going.

- **Articulate a vision**
- **Identify the purpose**
- **Share an understanding of the problem**
- **Create evaluation process/systems**
- **Set the stage for continuous improvement**
- **Ensure relevance**



Know one trusts
each other.

- Develop/strengthen relationships
- Level the participation playing field
- Establish process and decision procedure
- Be transparent
- Create systems
- Common language
- Show people what you mean



There is
someone/thing
missing.

- Decision makers
- Locals
- Diverse participation
- Potentially affected interests, end-users
- Leadership
- Neutral facilitation
- Funding
- Capacity

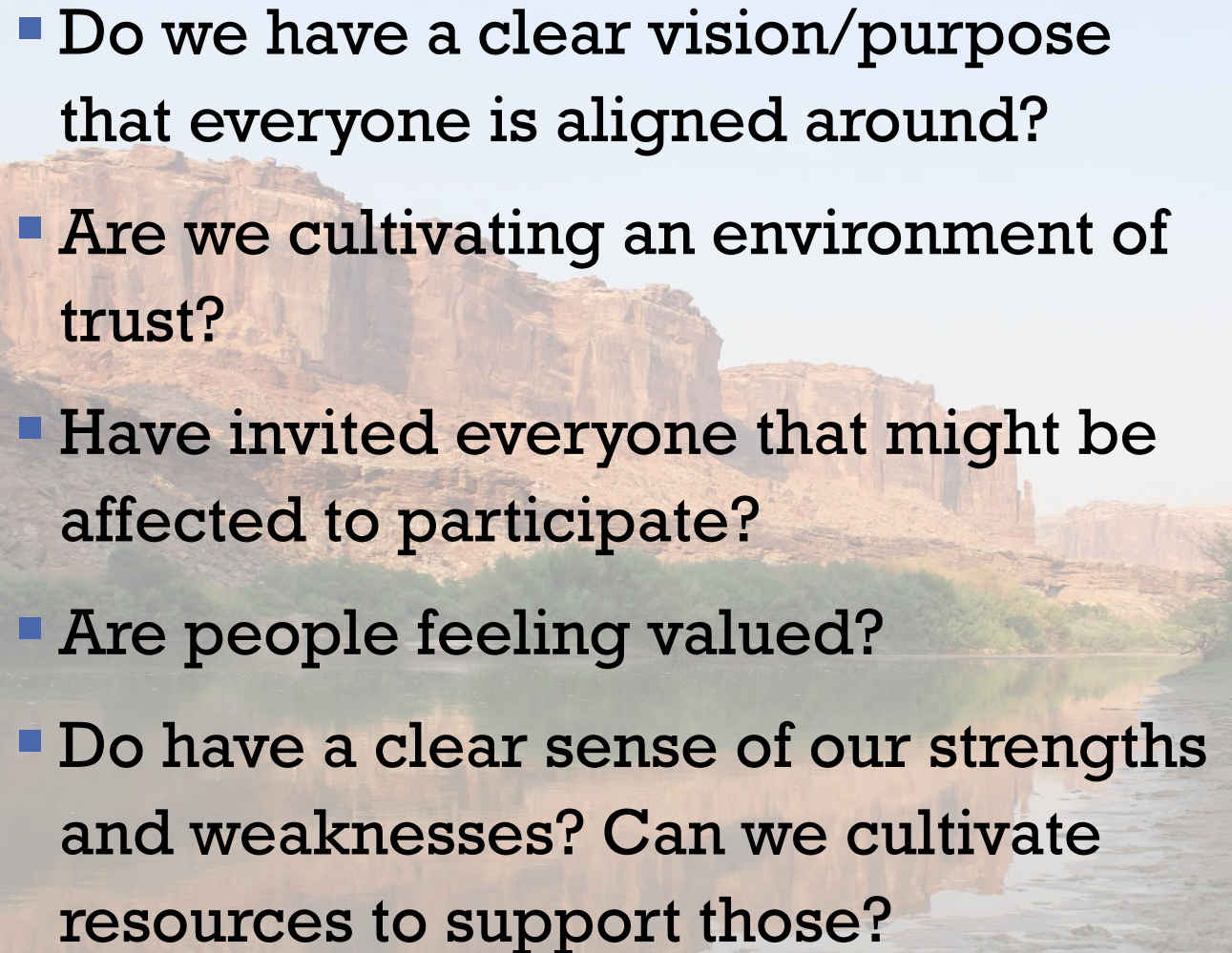




Participants
don't feel
valued.

- 
- **Consider stakeholders needs and values**
 - **Run a good meeting**
 - **Have clear roles/expectations**
 - **Acknowledge contributions**
 - **Be responsive/adaptive**
 - **Be realistic**
 - **Have beer (aka, meetings need to be fun)**

Questions that
can help position
you for success.

- 
- Do we have a clear vision/purpose that everyone is aligned around?
 - Are we cultivating an environment of trust?
 - Have invited everyone that might be affected to participate?
 - Are people feeling valued?
 - Do have a clear sense of our strengths and weaknesses? Can we cultivate resources to support those?

Resources

- Colorado Water Conservation Board, River Network, www.coloradosmp.org
- RiversEdge West, [Riparian Restoration Lessons Learned and Models...](#)
- [Collective Impact Forum](#)
- University of Utah S.J. Quinney College of Law, [Utah Program on Collaboration](#)
- Bleiker [Citizen Participation Training](#)
- [Network for Landscape Conservation](#)

Thank you!

- RiversEdge West
- Illene Roggensack, Third Sector Innovations/Strategic By Nature
- Marsha Porter-Norton
- Tahnee Robertson, Southwest Decision Resources
- Nicole Seltzer, River Network
- Kim Lennburg, Alba Watershed Consulting
- Danny Margoles, Dolores Watershed Resilient Forest Collaborative
- Mountain Studies Institute

Stacy Beaugh, Strategic By Nature, Inc.
stacy@bestrategicbynature.com

