

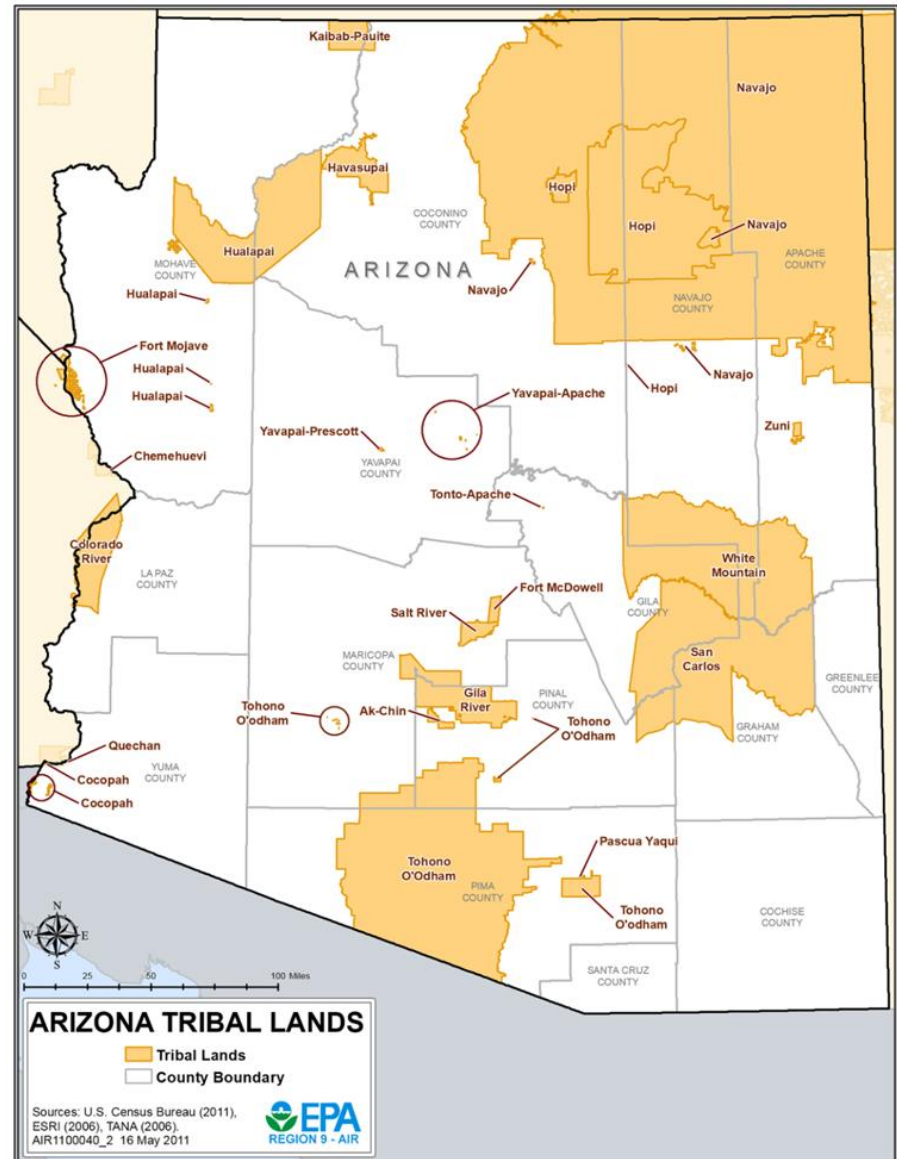
YAVAPAI-APACHE NATION

Environmental Protection Department

Jason Fullmer, Lead Technician
Donny Norris, Technician
Marvin Wathogoma, Technician

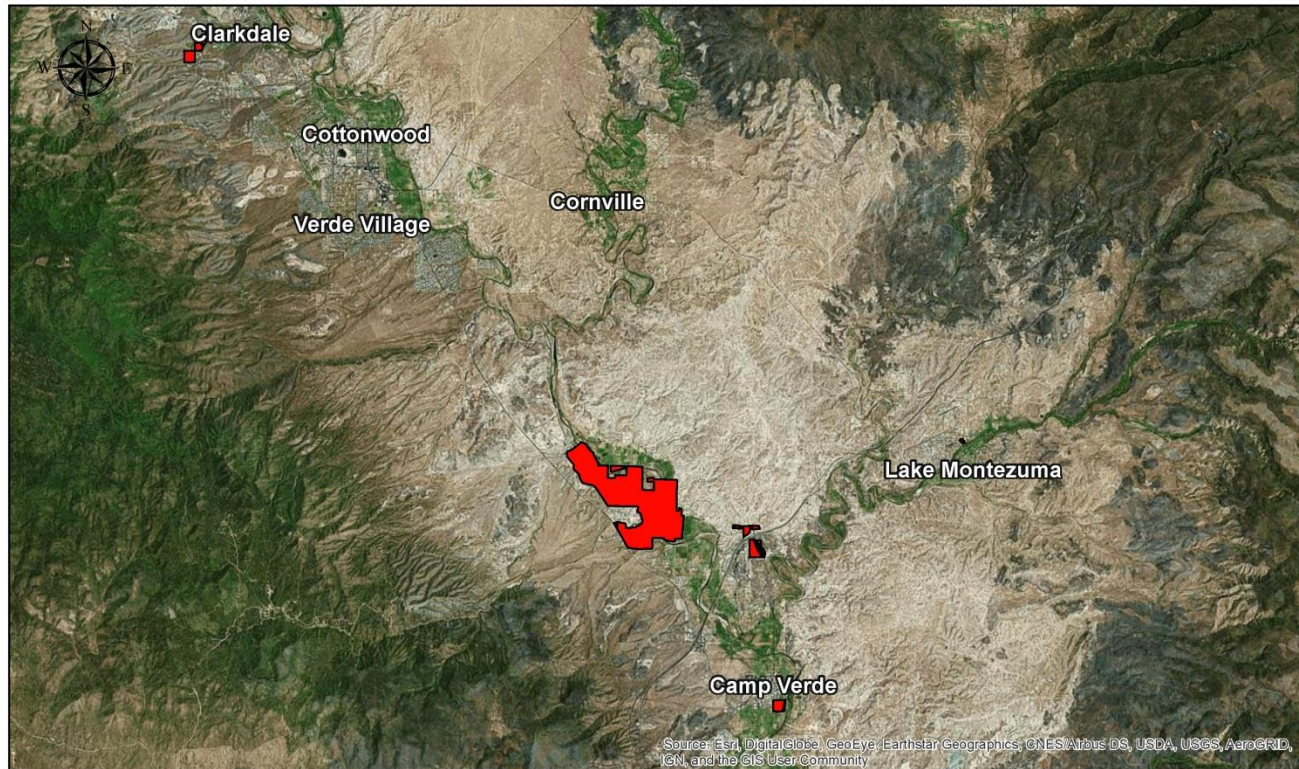


- The Yavapai Apache Nation is located in Central Arizona.
- Consisting of two distinct tribes:
The Yavapai People (Wipukyipai) Yuman language
The Apache People (Dilzhe'e) Athapaskan language



The Yavapai-Apache Nation is comprised of five tribal communities: Tunlil, Middle Verde, Rimrock, Camp Verde and Clarkdale. 2,581 total enrolled tribal members (half live on reservation).

Yavapai-Apache Nation



Legend

 Yavapai-Apache Nation

Disclaimer: Information on the map is believed to be accurate but the accuracy is not guaranteed. This map shall not be used as a legal document it is only a representation of a projected area for personal use only.

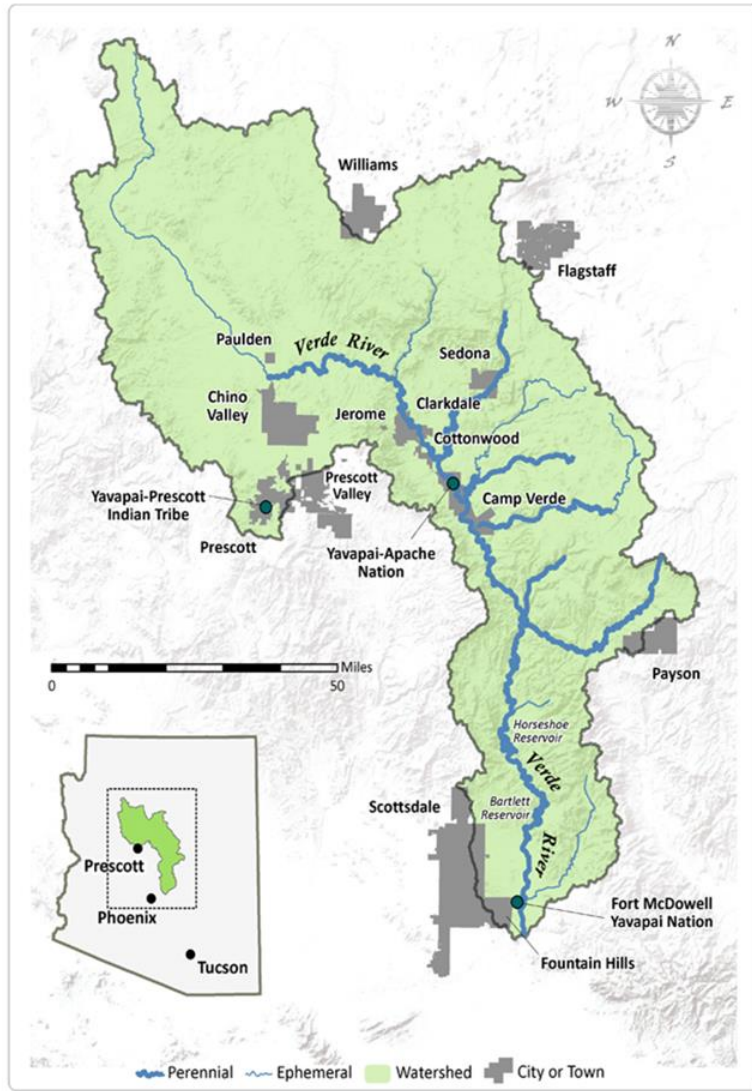


Verde Watershed

The Verde River is one of the few remaining perennial rivers in the West.

Starting from Paulden and ending around Fountain Hills where it joins the Salt River (190 river miles)

Nearly all the water is used for municipal, domestic, and industrial consumption in the Upper and Middle Verde River watershed. Most Agriculture establishments use ground water



Riparian Restoration Project

CWA Section 319 Nonpoint Source Pollution (NPS) Program

- Riparian Restoration
 - Non-Native Invasive Species
 - Treating/Removing
 - Re-vegetation
 - Successes/Challenges
 - Nursery



Non-Native Invasive Species

Tamarisk/Salt Cedar (most prevalent)



- Cut Stump Method (close to ground)
- Manual Removal of Roots
- Wood chipper for small diameter (large diameter used for firewood)
- Treat w/Imazapyr (cost approx. \$700 per 5 gallon)



Non-Native Invasive Species

- Tree of Heaven/Paradise
 - Manual Removal (Hand pull sprouts)
 - Hack & Squirt Method (large diameter trees, cut slits, spray inside; and small diameter trees spray bark on base up 12 inches)
 - Treat w/Triclopyr (cost approx. \$600 per 5 gallon)





Non-Native Invasive Species



- Russian Olive
 - Cut stump method
 - Treat w/ Imazapyr
 - Girdling or ring barking to expose the cambium layer, then treat



Working
collaboratively
to restore the
Verde
Watershed
through
training



Non-Native Invasive Species

- Arundo/Giant Reed
 - Cut stump method (close to ground)
 - Cut Stump Method (close to ground and spray immediately)
 - Treat w/Glyphosate within couple of minutes (cost approx. \$120 per 5 gallon)





Revegetation



- Re-vegetation of Native Trees /Plants
 - Willow/Cottonwood are our main native species
 - Other species are culturally sensitive species





Nursery

- Purpose of Nursery
 - Grow native plants for riparian restoration
 - Collaborate with tribal departments and other organizations
 - Conduct outreach/education to tribal community, children, youth, council, etc.









QUESTIONS?