



**Melissa McCann, ASLA**  
Arizona State University | ASU  
Director University City Exchange (UCX)



# RIO REIMAGINED

The Rio Salado Project

02.06.18. RIVERSEDGE WEST CONFERENCE

ASU





# INTRODUCTION

RIO REIMAGINED



Rio Salado/SRPMIC/Riverview Mesa



# 55+ mi. revitalization



*The Rio Salado project has the potential to transform the Salt River bottom and realize an untapped Valley treasure.*

- U.S. Senator John McCain



**55+ mi. revitalization**

- **RECONNECT THE COMMUNITY TO THE RIVER**
- **ESTABLISH A METROPOLITAN VISION FOR THE FUTURE**



- **BE A CATALYST FOR ECONOMIC GROWTH & INCLUSION**
- **FEATURE DEMONSTRATIONS OF SUSTAINABLE PLANNING**
- **BUILD AN UNPRECEDENTED REGIONAL DESTINATION**

**PROJECT ASPIRATIONS**

RIO REIMAGINED

**ASU**





RIO SALADO PHOENIX

RIO REIMAGINED

ASU



# project length in miles

55+ Miles

15.5 Miles

88 Miles

20 Miles

10 Miles

30 Miles

22 Miles

1.5 Miles

13 Miles

51 Miles

**Rio Salado Project**

San Antonio River Improvements

Trinity River Vision, Ft. Worth

Trinity River Corridor, Dallas

Buffalo Bayou, Houston

Chicago River Corridor Plan, Chicago

The BeltLine, Atlanta

Highline, NY

Three Rivers Park, Pittsburgh

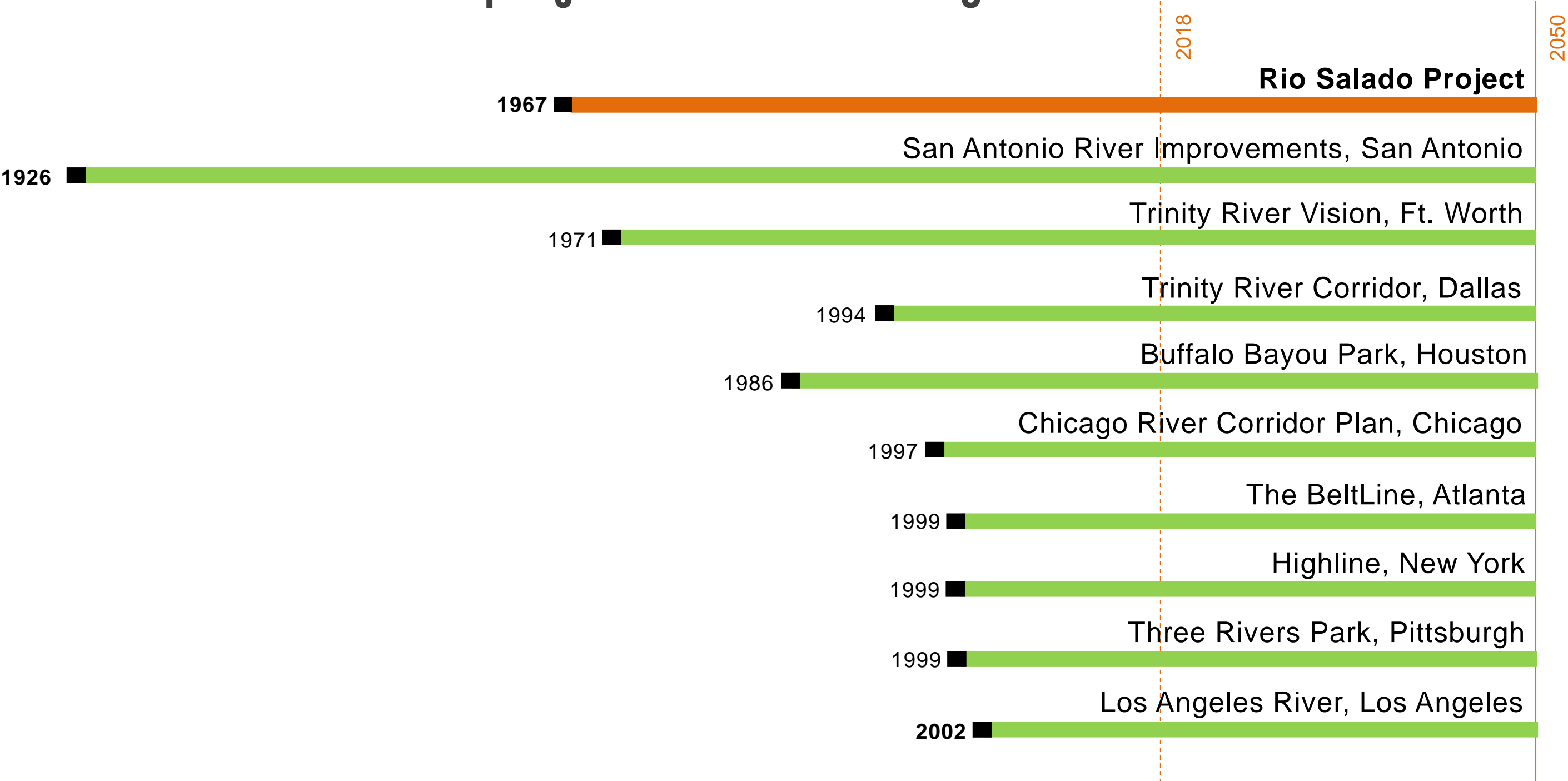
Los Angeles River, Los Angeles

PRECEDENTS: SCALE

RIO REIMAGINED

ASU

project duration in years







San Antonio TX



Houston TX



Atlanta GA



Fort Worth TX

PRECEDENTS: PROGRAM

RIO REIMAGINED

ASU





**WATER**



**COMMUNITY**



**ECONOMY**



**FUNDING**

**MAJOR TOPICS**  
RIO REIMAGINED





City of Phoenix



Avondale



# STATEMENT OF INTENT

RIO REIMAGINED



Tres Rios Wetlands





# STATEMENT OF INTENT

RIO REIMAGINED





# URBANWATERS

FEDERAL PARTNERSHIP



US Army Corps  
of Engineers



FEMA



## URBAN WATERS FEDERAL PARTNERSHIP

Environmental Protection Agency | EPA Region 9

RIO REIMAGINED

ASU



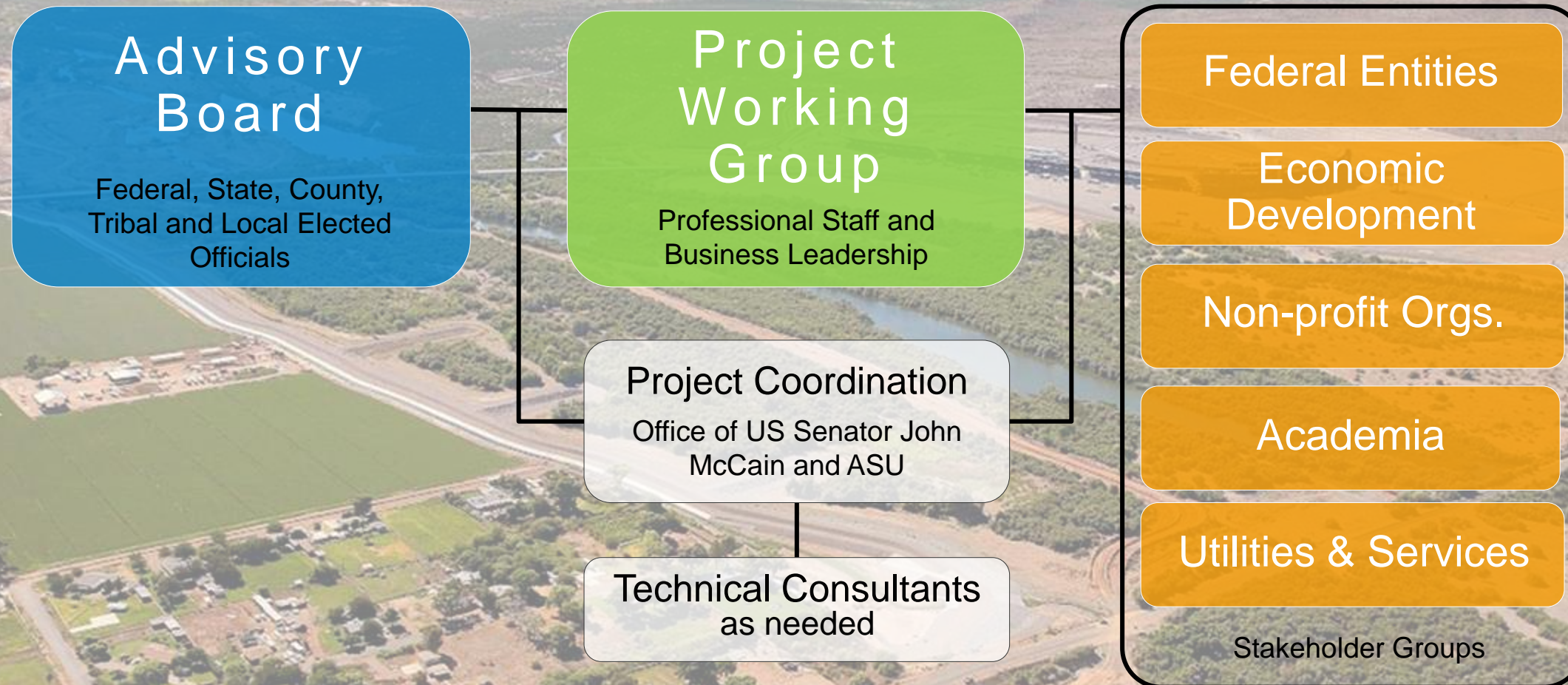


# FEDERAL | STATE PARTNERS TOUR

RIO REIMAGINED







# STAKEHOLDER FRAMEWORK

RIO REIMAGINED



Gila River Confluence / Goodyear



# Project Working Group

Professional Staff and Business Leadership

## Project Coordination

Office of US Senator John McCain and ASU

## West Valley

ZONE 3

Avondale, Goodyear, GRIC and Buckeye

## Central Valley

ZONE 2

GRIC, Phoenix and Tempe

## East Valley

ZONE 1

Mesa, SRP-MIC and Tempe

WORKING GROUP SUBCOMMITTEES

RIO REIMAGINED

ASU

Gila River Confluence / Goodyear



## RIO WORKING GROUP

### River AUTHORITY

A cooperative agreement via  
IGA or JPA between public  
entities for the river right-of-  
way with Army Corps and  
others

### Revitalization CORPORATION

A non-governmental organization  
tasked with implementing the plan  
through land development,  
planning

### Project FOUNDATION

A non-profit organization  
tasked with maintaining the vision,  
providing leadership, and raising funds  
to execute the project

PRECEDENTS: ORG STRUCTURE

RIO REIMAGINED











**Kelly Wolff**

Arizona Game & Fish Department | AZGFD  
Habitat Evaluation + Lands Program Manager, Region VI



**RIO SALADO WEST VALLEY**  
RIO REIMAGINED

**ASU**



17+ mi. revitalization

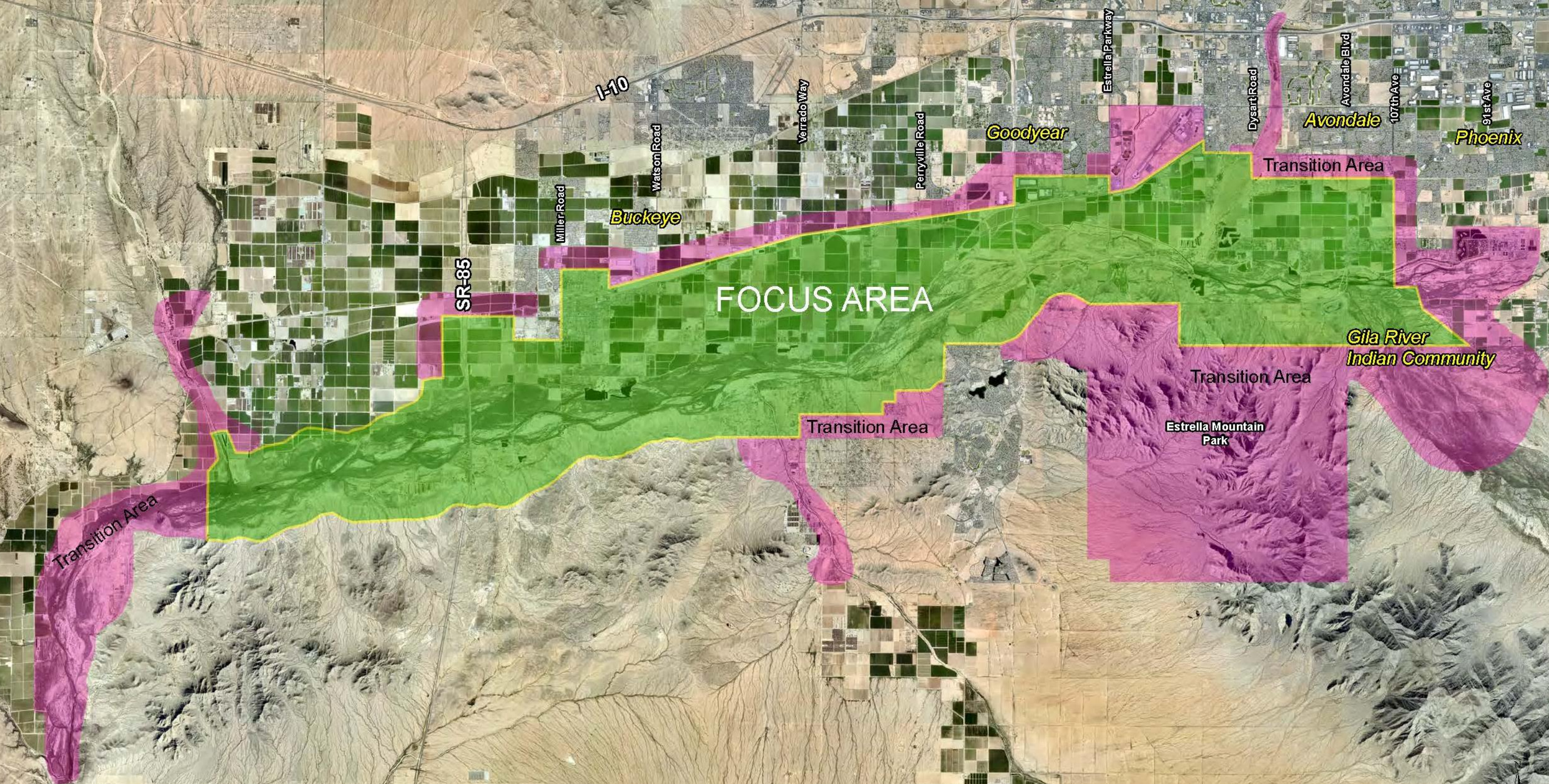


RIO REIMAGINED WEST ZONE

RIO REIMAGINED

ASU







# Lower Gila River Collaborative Began Several Years Ago

- **Purpose:**

Serve as an ongoing forum for collaboration, coordination, integration and outreach for restoration, habitat enhancement, fuels and flood management, cultural resource protection, outdoor recreation and river-based economic development





# Variety and Scope of Projects

- 4 AZGFD Wildlife Areas (4,000+ acres)
- 6,800+ acres of AZGFD managed lands
- Private Lakes
- Integration with Regional Trail System
- Buckeye 40-acre Parcel
- Festival Fields
- Rio Vista Trailhead
- GRIC Restoration & Fuels Management
- FCD Pilot Restoration Projects
- BLM Fuels Management
- Buckeye In Lieu Fee Lands
- El Rio Lakes
- Buckeye Lakes
- Goodyear Constructed Wetlands
- Tres Rios
- Estrella Mountain Regional Park
- Buckeye Hills Regional Park
- Arizona Audubon Habitat Study





# Aspirations

*(from April 2018 Sonoran Institute Workshop)*

- The river is valued for the multiple **social and economic opportunities** and benefits it provides.
- Improved **water quality**
- Secure a **dedicated/permanent water source**
- Improved **habitat quality** and **quantity**
- The river is managed and monitored to ensure **long term ecological health**.
- **Demonstrate benefits** to all users and stakeholders
- Have the Gila River be recognized as a **regional amenity** and receive elevated public support and political consideration
- Ensure that the river provides **access to trails** and supports regional and local **connectivity**.
- An invested group of stakeholders and communities is convened to be **stewards of the river**.



# Current Lower Gila River Initiatives

## EL RIO MOU GROUP (Gila/Agua Fria to SR-85 Bridge)

Restore the river  
Retain heritage landscape character  
Focus on multiple use  
Lined to surrounding communities  
Through public-private partnerships  
While enhancing public safety with  
flood control measures

### PARTNERS

Maricopa County  
City of Buckeye  
City of Avondale  
City of Goodyear

## LOWER GILA RIVER COLLABORATIVE (Salt/Gila to Gillespie Dam)

Serve as an on-going forum for collaboration,  
coordination, integration and outreach for  
restoration, habitat enhancement, fuels and flood  
management, cultural resource protection, outdoor  
recreation and river based economic development

### PARTNERS

Maricopa County	NRCS
City of Buckeye	USFWS
City of Avondale	BLM
City of Goodyear	APS
City of Phoenix	BWCDD
GRIC	ARPA
AGFD	Buckeye Valley NRCD
ADEQ	Audubon Arizona
ADWR	RiversEdge West
State Forestry	Sonoran Institute
BOR	Pheasants Forever

## RIO REIMAGINED - WEST ZONE (Geography and Membership in Process)

### PROJECT ASPIRATIONS

Reconnect the Community to the River

- Establish a Metropolitan Vision for the Future
- Be a Catalyst for Economic Growth and Inclusion
- Feature Demonstration of Sustainable Planning
- Build an Unprecedented Regional Destination

### WATER

- Project must be Water Positive
  - A Laboratory for Innovation
- Tightly Calibrated Uses and Impact as a Leading Indicator for the Future

### ECONOMY

- Acknowledge Legacy of the River Industries
  - Brownfield Redevelopment Opportunities
  - Be the Capitol of the Sustainability Business
- Signal a New Identity and Heightened Expectations for the Metro Region

### COMMUNITY

- Focus on Social Equity and Integrative Planning
  - Access to Education, Training & Employment
  - Offer Culturally Aware Points of Engagement
- Recognize & Empower the Next Generation of Leaders & Community Voices

### PARTNERS

Maricopa County	State Forestry
City of Buckeye	AZ Dept of AG
City of Avondale	USACE
City of Goodyear	USDA/NRCS/FS
GRIC	BLM/BOR/USGS/FWS
MAG	EPA/ADEQ
AGFD	FEMA/ADEMA
ADOT	US Dept of Commerce
ADWR	US Treasury
	WestMarc

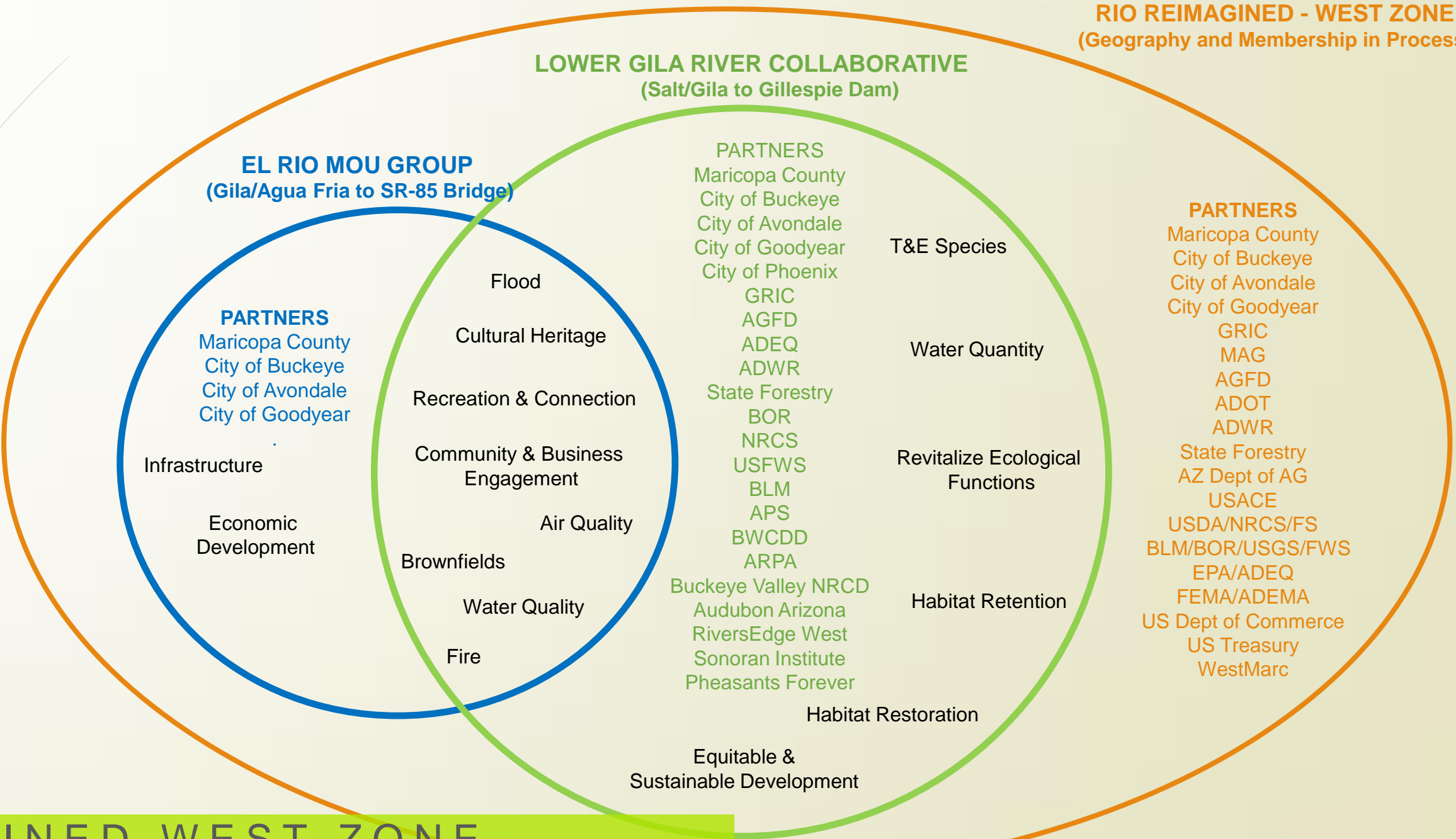
RIO REIMAGINED WEST ZONE

RIO REIMAGINED



# Desired Future Collaboration

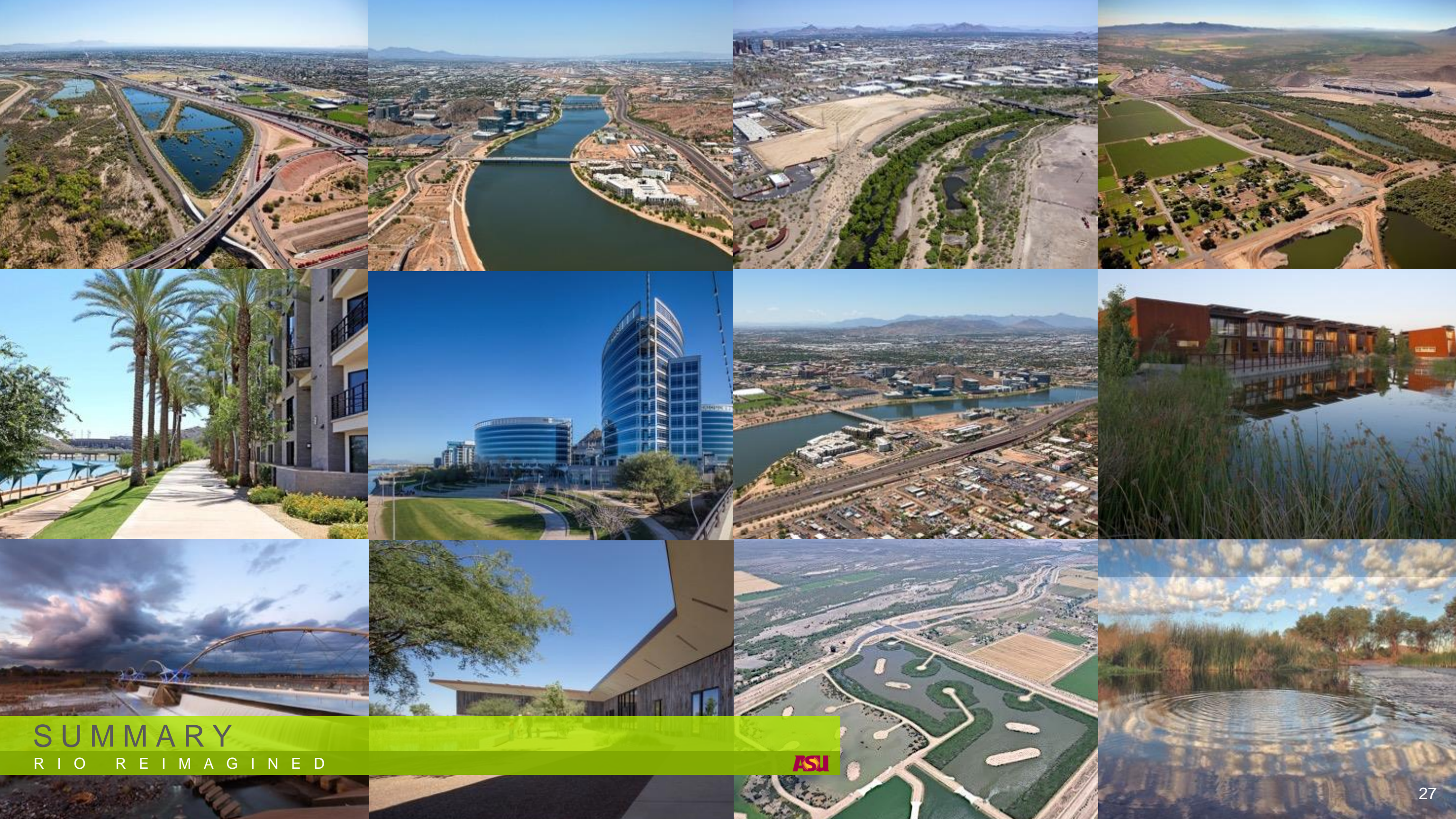
RIO REIMAGINED - WEST ZONE  
(Geography and Membership in Process)











# SUMMARY

RIO REIMAGINED





# The Rio Reimagined

Join us for the Valley's most impactful  
green infrastructure project in a century

RIO REIMAGINED WEBSITE

RIO REIMAGINED

ASU

[www.rioreimagined.org](http://www.rioreimagined.org)





# Healing the Lower Gila River


Lower Gila River Collaborative

LOWER GILA RIVER COLLABORATIVE  
RIO REIMAGINED



<http://bit.ly/LGRCStory>





*The Rio Salado project has the potential to transform the Salt River bottom and realize an untapped Valley treasure.*

*- U.S. Senator John McCain*

THANK YOU  
RIO REIMAGINED

ASU

Tempe Town Lake