



UTAH's WATERSHED RESTORATION INITIATIVE

Nicole Nielson
Restoration Biologist
Utah Division of Wildlife Resources
watershed.utah.gov

What is WRI?

- A partnership driven effort to improve high priority watersheds in Utah
- What ecosystem values do we focus on improving?
 - Watershed health and biological diversity
 - Water quality and yield
 - Opportunities for sustainable uses of natural resources





Utah Partners for Conservation and Development

- Founded in 1993, reconvened in 2003 to address drought/state-wide sagebrush die-off
- Top leaders (Director's Council) of thirteen major federal and state agencies, universities, and NGO
- WRI is a UPCD-sponsored initiative

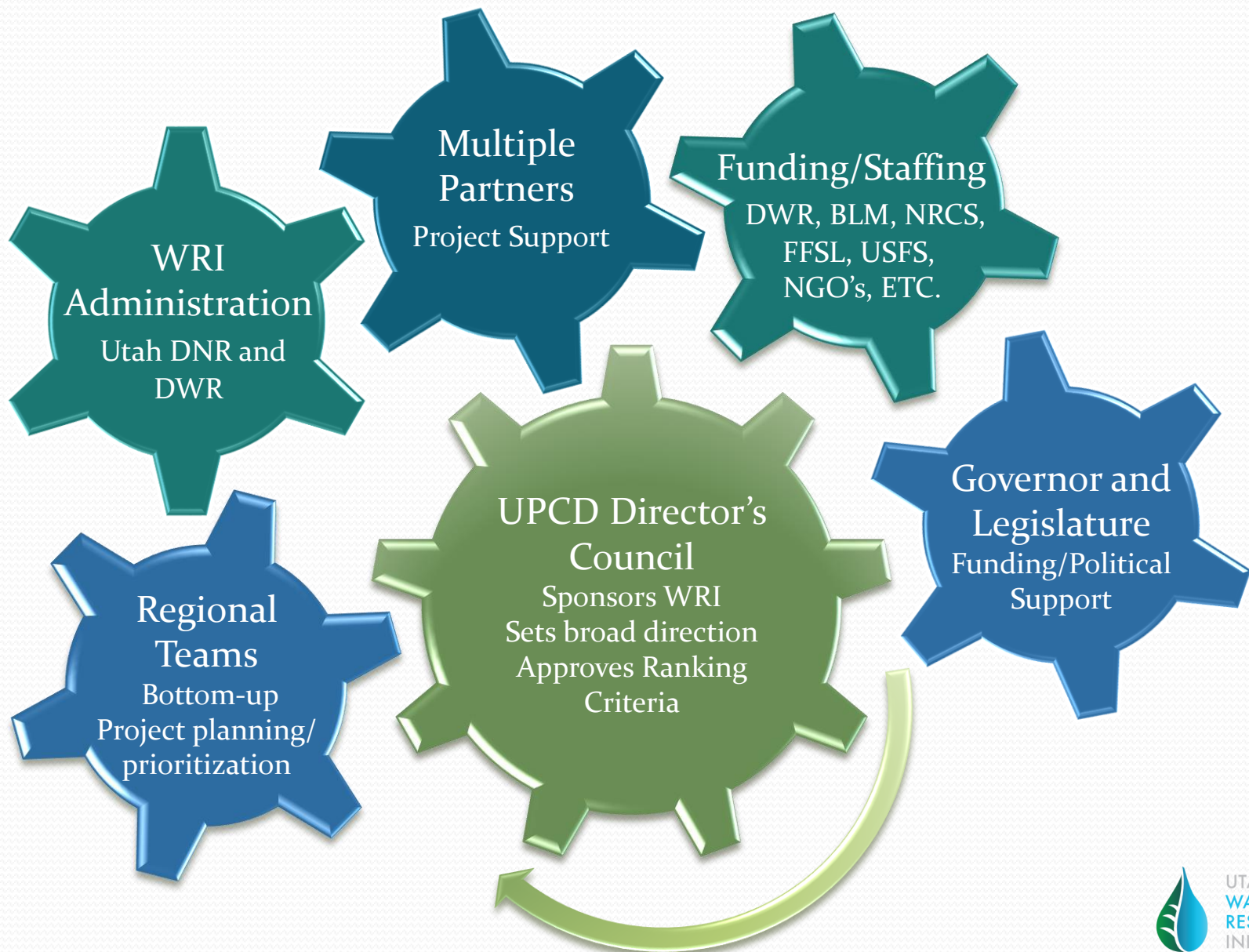


Why was WRI Created?

- Address “Threats” to Watersheds/Wildlife
 - Out of balance ecosystems
 - Pinyon-Juniper over abundance
 - Aspen decline due to conifer encroachment
 - Inappropriate Fire Frequency and Intensity
 - Decline of Healthy Stream/Riparian areas
 - Invasive Non-Native Species

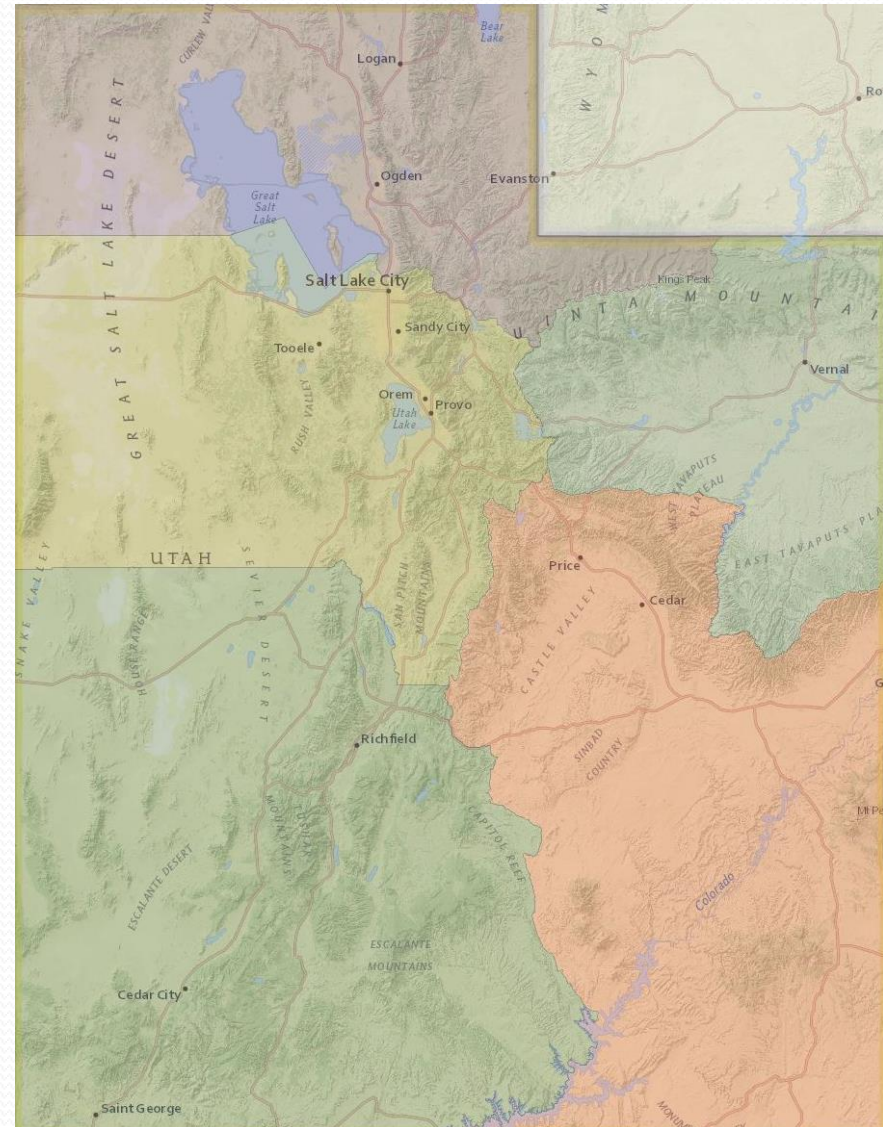


WRI Supporting Infrastructure



Regional Teams

- 5 Regional Teams in Utah
- Follow UDWR Regional Boundaries
- Each Regional Team operates independently
 - Develops and amends their own team charter
 - Elects their own leadership
 - Reviews and works to improve WRI proposals
 - Annually reviews and amends conservation focus areas
 - Annual field tour and project demonstrations
 - Proposal evaluation and scoring



Current WRI Funding Sources

- BLM Sources
 - HLI, Fuels, Sage-grouse, RL, FIAT, etc.
- State Sources
 - WRI – Backbone funding
 - WRI – NEPA Funding
 - WRI – Pre-Suppression funds
 - Pitman Roberson Federal aid – requires 75/25 match, NEPA
 - Habitat Council Funds
 - Supplemental Fire Rehab funds
 - ESMF, ISM, Blue-Ribbon Council, SITLA, etc.
- Other Sources
 - Sportsman funds – ECP, ICP, Expo
 - USFS regional forest funds, shared stewardship
 - Mitigation funds – Oil and Gas development
 - NRCS – RCPP, EQIP, SGI, etc.
 - FEMA – Hazard mitigation grant fund - post fire



Information Website - watershed.utah.gov

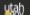
WHAT IS THE WATERSHED RESTORATION INITIATIVE?




The Watershed Restoration Initiative (WRI) is a partnership based program in Utah to improve high priority watersheds throughout the state. WRI is sponsored by the Utah Partners for Conservation and Development and is in its 11th year. The Watershed Program focuses on three ecosystem values: 1) watershed health and biological diversity, 2) water quality and yield, and 3) opportunities for sustainable uses of natural resources. WRI is a bottom-up initiative where project planning, review, and ranking occur at a local level. Five regional teams elect their own leaders, establish focus areas, review, score and rank project proposals using a comprehensive project prioritization score sheet, and assist their members in implementing projects. See our "Latest News" section for more information.


Tyler Thompson - Director, Watershed Restoration Initiative

Project Tracking Website – wri.utah.gov

 Utah.gov

Department of Natural Resources

Settings 

UTAH'S WATERSHED
RESTORATION INITIATIVE


Projects


Maps


About Us


Logout

Welcome: Nicole Nielson

User Settings 

Add Project 





Miller Creek Watershed Restoration
Region: Southeastern
ID: 4207

Project Status: Completed

Map This Project

Export Project Data

Title Page

* Title
Miller Creek Watershed Restoration ?

* Short Description of Project
Multi partner collaboration for restoration of instream, riparian, and upland habitats in Miller Creek, tributary to the Price River. ?

* Short Description of Project Location
This project will encompass activities ranging from beaver dam analogs to pinyon-juniper removal in the Miller Creek Watershed. There are three private landowners as well as publicly owned property participating in the project. ?

* Project Manager
Jordan Nielson

Project ID
4207

* UWRI Region
Southeastern ?

* Lead Agency or Organization
Trout Unlimited ?

* Fiscal Year of Implementation
2019 ?

Contributors
Barb Smith | Dana Truman
Jamie Nogle | Holly Eagleston
Stuart Bedke | Nicole Nielson
Daniel Keller | Jimi Gragg
Jason Kirks | Makeda Hanson ?

Title Page

Project Details

Finance

Species

Habitats

Seed


Comments

Images/Documents


Completion Form

Project Summary Report


Cancel Project




Business System Map Page

 Utah.gov

Department of Natural Resources

Settings 


 UTAH'S WATERSHED RESTORATION INITIATIVE

Projects

Maps

About Us

Logout



Miller Creek Watershed Restoration (4207) Completed

Adjacent Projects

Project Details

Details

Description

Multi partner collaboration for restoration of instream, riparian, and upland habitats in Miller Creek, tributary to the Price River.

Project Manager: Jordan Nielson

Lead Agency: Trout Unlimited

Region: Southeastern

Terrestrial Acres: 1,079.7354 ac

Aquatic/Riparian Acres: 16.4732 ac

Stream Miles: 0.9556 mi

County

CARBON: 1,096.2087 ac

Land Ownership

Federal, BLM: 852.6647 ac

Private, Private: 78.8149 ac

State, SITLA: 164.7291 ac

Focus Area

Southeastern: 9,353.1102 ac

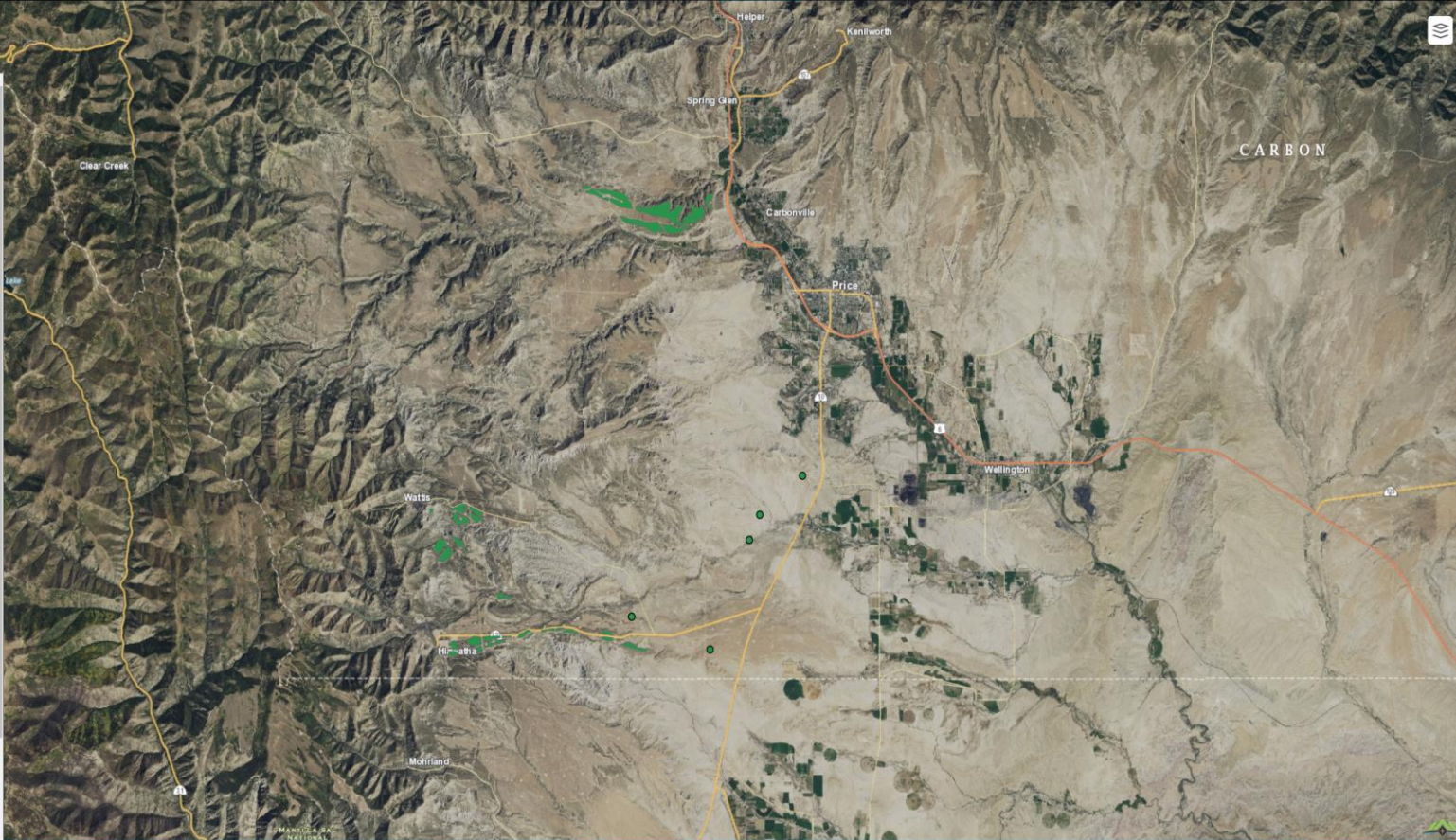
Sage Grouse

Carbon: 376.123 ac

Feature Category	Action	Treatment/Type	
Water developmen...	Maintenance	Pond Cleaning	1
Terrestrial Treatme...	Vegetation removal...	Lop and scatter	1
Terrestrial Treatme...	Vegetation removal...	Lop and scatter	1
Terrestrial Treatme...	Vegetation removal...	Lop-pile-burn	1
Aquatic/Riparian Tr...			1
	Stream Corridor/C...	Beaver dam analog	
	Stream Corridor/C...	Check dam(s) (low...	
	Stream Corridor/C...	Large woody debris...	
	Vegetation Improv...	Pole planting/cuttings	
	Vegetation Improv...	Seedlings	
Terrestrial Treatme...			1

Bullhog

Full size



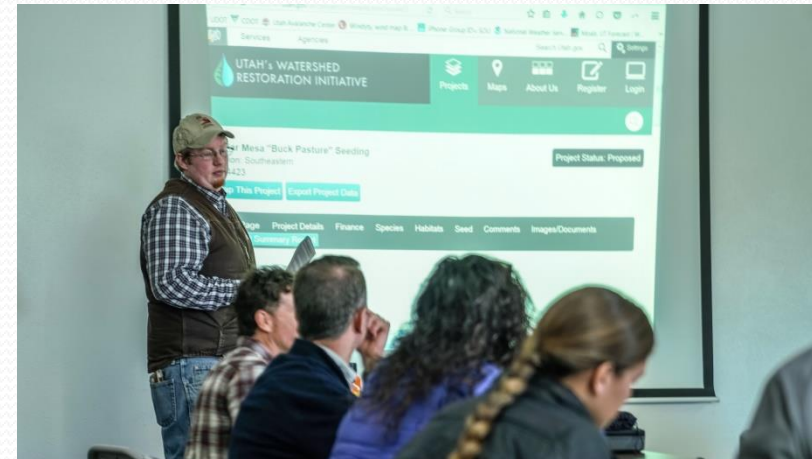
Utah.gov Terms of Use Privacy Policy Accessibility Policy Translate Contact Us

Note: Internet Explorer is not fully supported and some functionality will not work. Please use a recent version of Chrome, Firefox, Edge or Safari

2.1.0-422-gf602d1 © 2015 - 2020 D15

Utah WRI – Lessons Learned

- Started with an Obvious Threat and a Big Idea.
 - Obvious threat – Sage-brush die-off, cheatgrass invasion and catastrophic wildfire, drought, etc.
 - Big idea (broader than just the immediate threat) – restore healthy watersheds for all interests (water quantity & quality, watershed health, livestock/wildlife forage, fire and fuels, benefit all users).
 - Sellable to big audience.



Utah WRI – Lessons Learned

- Leadership Provided at Multiple Levels
 - Endorsed and sponsored at the highest levels – UPCD.
 - Local leadership – rotating chairs of regional teams are empowered and act.
 - Largest restoration players are involved.
 - Largest partners willing to take risks and compromise.



Utah WRI – Lessons Learned

- History on Our Side
 - Great Basin Research Center since 1940s
 - 60 years of habitat experience in DWR, BLM, USFS
 - Long-term cooperation in range trend monitoring – DWR, BLM, USFS, UDAF
 - Range trend data supporting the need for direct action
 - Long standing statewide culture of “active management”



Utah WRI – Lessons Learned

- Bottom-up Hierarchy
 - All real project work done at regional team level – write own charter, elect own leaders, establish own focus areas, review and rank own projects
 - Centralize only when it makes sense – project database, administration (contracting, accounting support, etc), fundraising, marketing, and training
 - Only broad direction and guidance from top – annual schedule, ranking criteria
 - Administration supports local decisions – e.g., do not change ranking decisions made by local teams
 - Administration removed roadblocks



Utah WRI – Lessons Learned

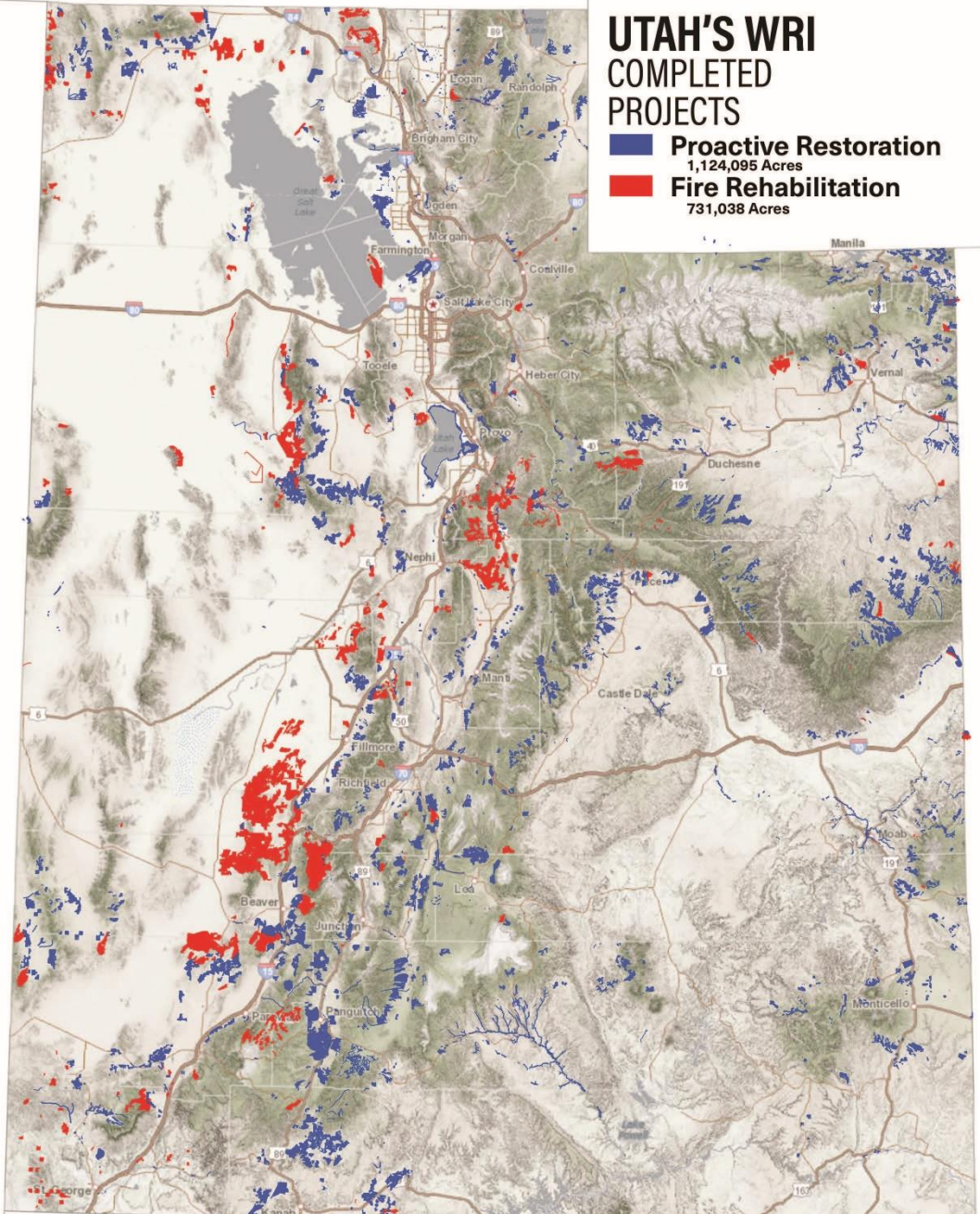
- Practice Partnership
 - Easy and safe to participate – no secret handshake
 - Open communication – database, meetings, field tours
 - Play to partners strengths
 - Credit shared by all – “give credit freely”, “WE not I”
 - Report and promote accomplishments
 - Come together, provide support when challenged
- Science Based Approach
 - Use best science available
 - Monitoring is emphasized
 - Adaptive management



Utah WRI – Lessons Learned

- Operate at a Scale that Matters
 - Big projects – “Go big or go home”
 - Big NEPA, Big funding, Economy of scale
 - Ownership boundaries blurred
 - Reward inclusion of adjacent landowners
- Solution-minded not Problem-minded
 - Analyze problems but quickly get to solutions
 - Move past the “Paralysis of Analysis”





UTAH'S WRI COMPLETED PROJECTS

Proactive Restoration
1,124,095 Acres
Fire Rehabilitation
731,038 Acres

1.8 Million Acres
1,400 Stream Miles
Treated since 2006



60% Proactive
40% Reactive



COMPLETED ACRES BY LANDOWNERSHIP

USFS - 205,748 - 123,640	SITLA - 98,008 - 51,200	FFSL - 63,017 - 726	DOD - 6,643 - 8,008	Tribal - 868 - 10,016
BLM - 494,291 - 338,150	UDWR - 105,165 - 22,530	Private - 135,958 - 165,127	NPS - 4,153 - 0	Other - 10,244 - 11,641

Questions

