

# SEEDING RESTORATION PRACTICES AND PRINCIPLES

---



United States  
Department of  
Agriculture

# Overview

---

Getting Started

---

Flowchart

---

Soils

---

Assess the Site

---

Cover Crop

---

Seed mixes

---

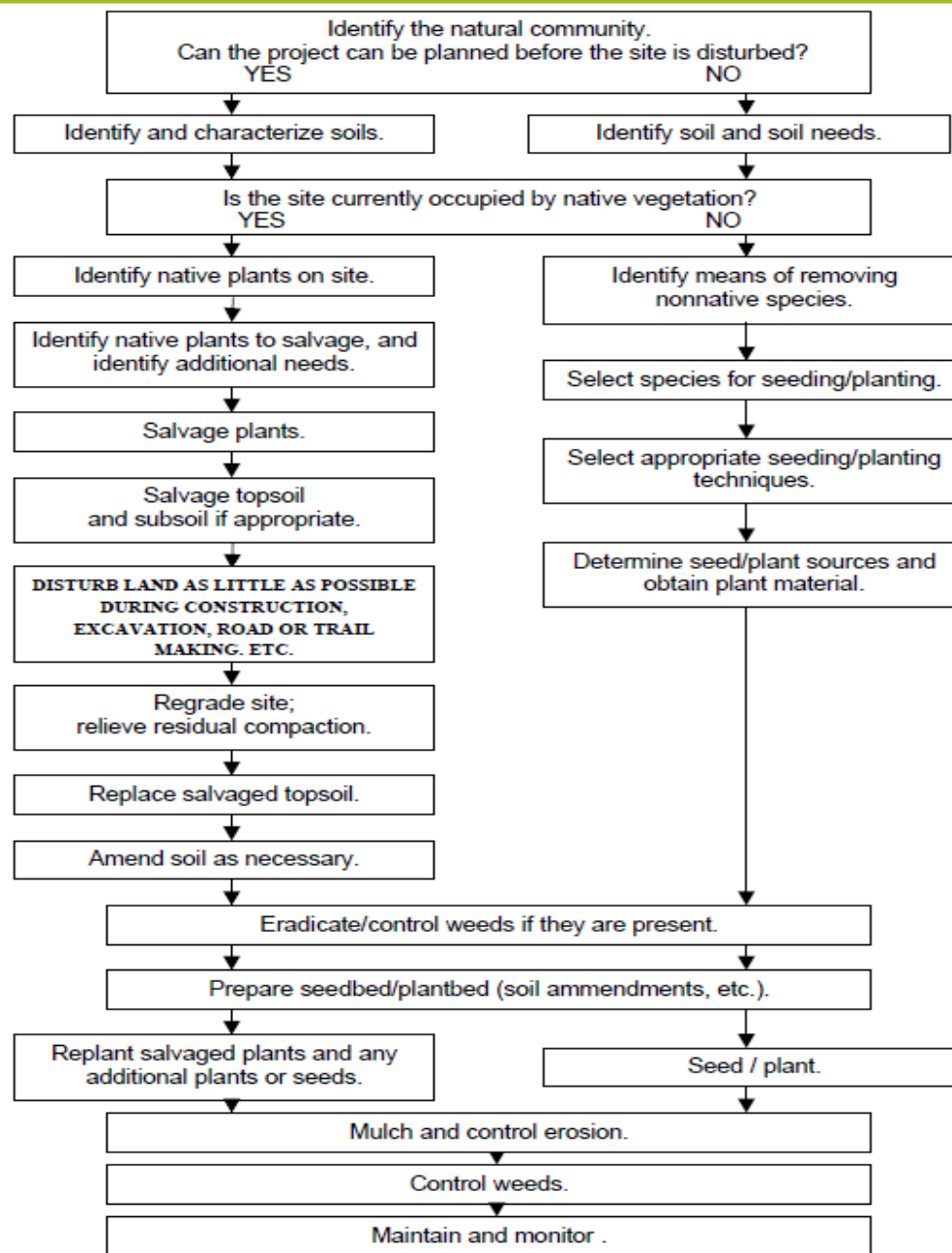
Seedbed preparation

---

Seeding

---

Management





**RESTORATION SEEDING PROJECTS  
ARE LIKE A TWO YEAR OLD**

---



**KNOW YOUR INGREDIENTS**

---

# SOILS – YES THERE IS AN APP FOR THAT

SOIL WEB APP

*Set the desired GPS accuracy with the slider, and click "Done" to return to the main view.*

*Component names are linked to their details on the CA Soil Resource page. Use the "back" arrow to return to the main view.*

*Click to start application*

*Application starts with GPS disabled. Click "GPS" to start acquiring location data. Click on the "info" button for application details.*

*Once a location with sufficient accuracy is acquired, map unit components are displayed. Soil profiles link to their Official Series Description*

**Soil Taxonomy**  
Order: Entisols  
Suborder: Oxisols [Map of Suborders]  
Greatgroup: Xerothents  
Subgroup: Typic Xerothents  
Family: Coarse-loamy, mixed, nonacid, Xerothents  
Soil Series: Pollasky (Link to OSD) (L  
Phase: Pollasky-Montpellier complex, l  
slopes

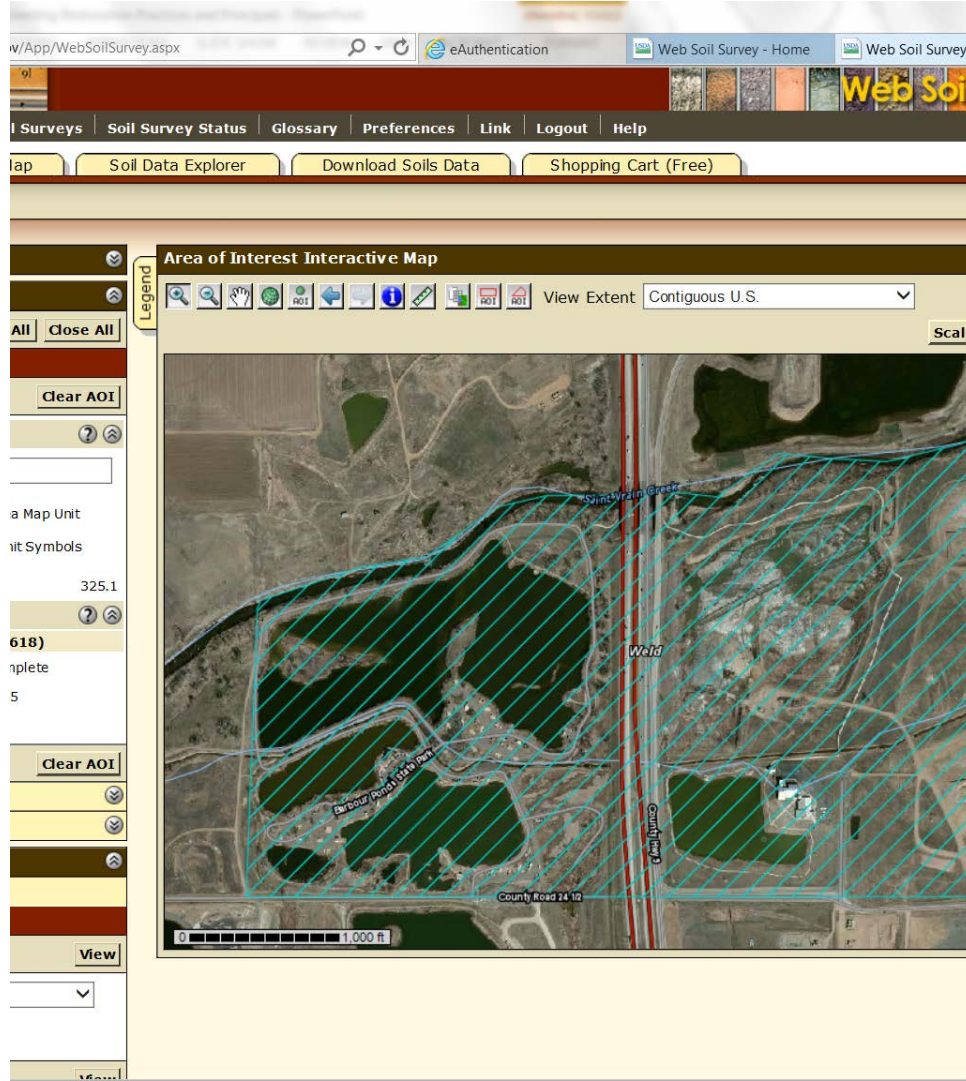
**Land Classification**  
State Index: 8  
Land Capability Class [non-irrigated]: 4  
Land Capability Class [irrigated]: 4  
Ecological Site Description: 0

**Soil Suitability Ratings**  
[Water Related]  
[Not a Description]

**POLLASKY SERIES**

The Pollasky series consists of moderately deep, well drained, moderately coarse textured Regosols formed in the residuum from acidity to moderately consolidated arkosic sediments. They occur on undulating to steep dissected terraces under annual grasses and fields. They have brown, slightly acid sandy loam A horizons and pale brown to yellowish brown, slightly acid to neutral, sandy loam C horizons sharply overlying consolidated granitic sediments. Pollasky soils occur in the same





# WEB SOIL SURVEY

Area of Interest (AOI)

Soil Map

Soil Data Explorer

Download Soils Data

Shopping Cart (Free)

Printable Version

Add to Shopping Cart

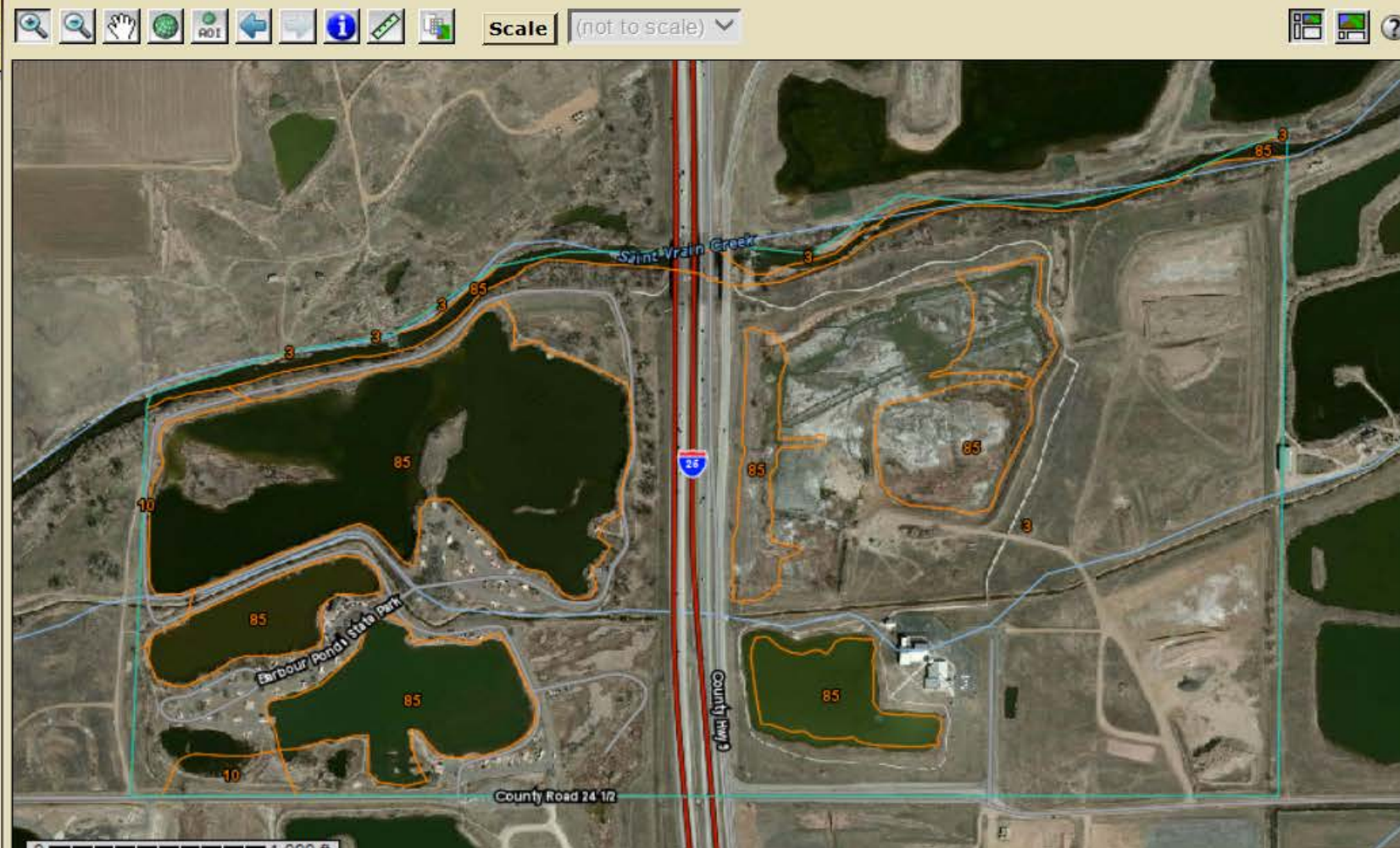
Search

Map Unit Legend

Weld County, Colorado, Southern Part  
(CO618)

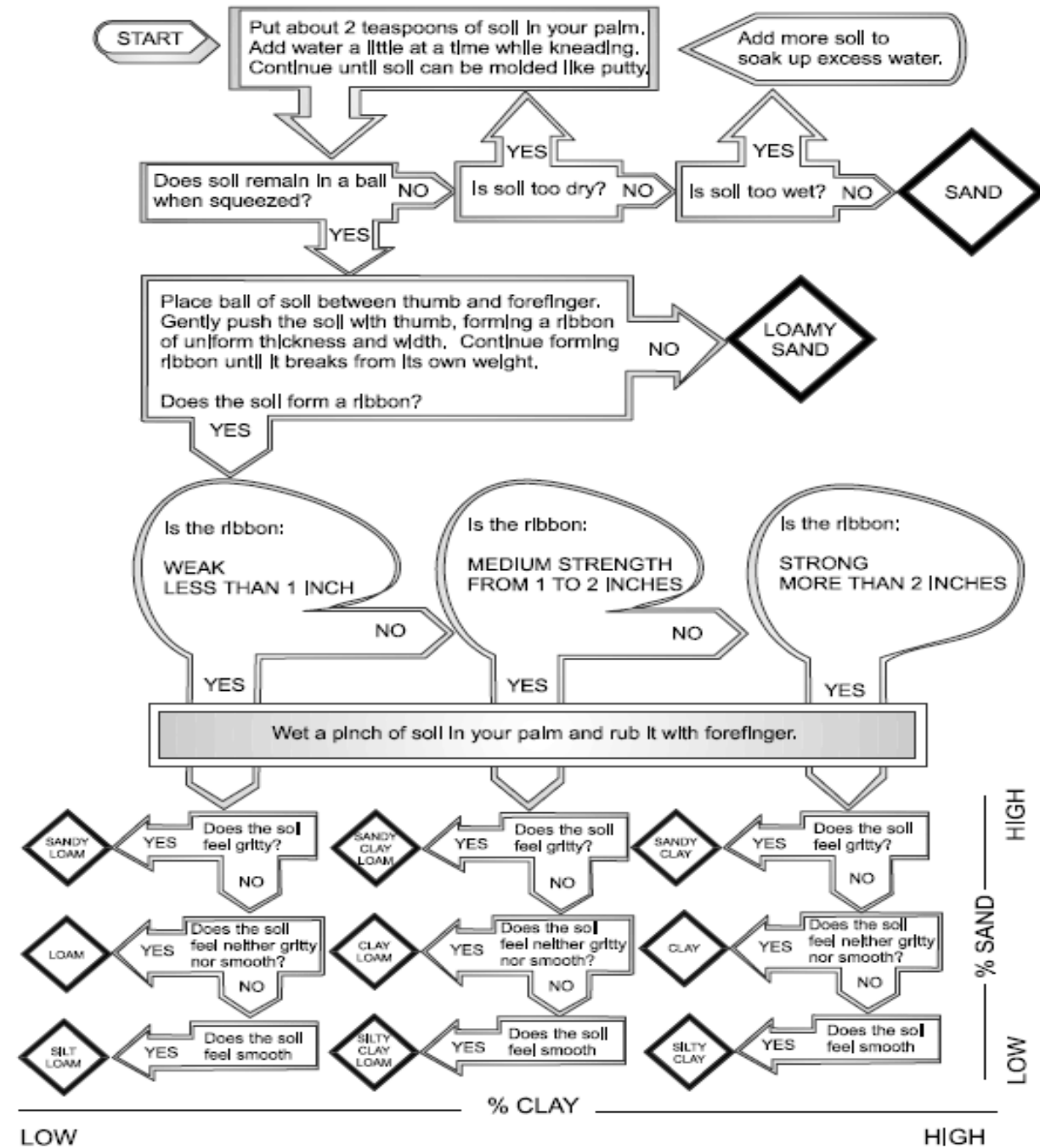
Map Unit Symbol	Map Unit Name	Acres in AOI	Percent of AOI
3	Aquolls and Aquents, gravelly substratum	220.5	67.8%
10	Bankard sandy loam, 0 to 3 percent slopes, frequently flooded	5.6	1.7%
85	Water	99.0	30.5%
<b>Totals for Area of Interest</b>		<b>325.1</b>	<b>100.0%</b>

Soil Map





# Soil Texture





Soil Test Factor	Suitable Range	Unsuitable Range
pH	6.0 to 8.4	<5.0 & > 9.0
EC Electrical Conductivity	0-4	8-16
SAR – Sodium Absorption Ratio	<6	>15
% OM	> 2	Poor is < 0.5





Assess the site





# Cover Crops



# SEED MIX

---

			Blue Grama, Prairie Sandreed, Sand Bluestem (HCPC)		
COMMON/GROUP NAME	SCIENTIFIC NAME	SYMBOL	Group	lbs/acre	% Comp
GRASSES & GRASS-LIKES			1	1155 - 1403	70 - 85
blue grama	Bouteloua gracilis	BOGR2	1	330 - 495	20 - 30
prairie sandreed	Calamovilfa longifolia	CALO	1	330 - 495	20 - 30
sand bluestem	Andropogon hallii	ANHA	1	83 - 248	5 - 15
needleandthread	Hesperostipa comata ssp. comata	HECOC8	1	83 - 165	5 - 10
switchgrass	Panicum virgatum	PAVI2	1	83 - 165	5 - 10
western wheatgrass	Pascopyrum smithii	PASM	1	17 - 116	1 - 7
Indiangrass	Sorghastrum nutans	SONU2	1	17 - 83	1 - 5
little bluestem	Schizachyrium scoparium	SCSC	1	17 - 83	1 - 5
sideoats grama	Bouteloua curtipendula	BOCU	1	17 - 83	1 - 5
thickspike wheatgrass	Elymus elymoides ssp. elymoides	ELELE	1	0 - 83	0 - 5
prairie junegrass	Koeleria macrantha	KOMA	1	17 - 50	1 - 3
sand dropseed	Sporobolus cryptandrus	SPCR	1	17 - 50	1 - 3
Indian ricegrass	Achnatherum hymenoides	ACHY	1	17 - 33	1 - 2
red threeawn	Aristida purpurea var. longiseta	ARPUL	1	0 - 17	0 - 1
sand paspalum	Paspalum setaceum	PASE5	1	0 - 17	0 - 1
sun sedge	Carex inops ssp. heliophila	CAINH2	1	17 - 83	1 - 5
other native grasses		2GP	1	0 - 83	0 - 5
FORBS			2	165 - 248	10 - 15
American vetch	Vicia americana	VIAM	2	17 - 33	1 - 2
dotted gayfeather	Liatris punctata	LIPU	2	17 - 33	1 - 2
narrowleaf penstemon	Penstemon angustifolius	PEAN4	2	17 - 33	1 - 2
pacific peavine	Lathyrus polymorphus	LAPO2	2	17 - 33	1 - 2
prairie spiderwort	Tradescantia occidentalis	TROC	2	17 - 33	1 - 2
purple prairie clover	Dalea purpurea var. purpurea	DAPUP	2	17 - 33	1 - 2
scarlet globemallow	Sphaeralcea coccinea	SPCO	2	17 - 33	1 - 2
upright prairie coneflower	Ratibida columnifera	RACO3	2	17 - 33	1 - 2
cutleaf evening-primrose	Oenothera coronopifolia	OECO2	2	0 - 17	0 - 1
hairy goldaster	Heterotheca villosa	HEVI4	2	0 - 17	0 - 1
heath aster	Symphyotrichum ericoides	SYERE	2	0 - 17	0 - 1
Louisiana sagewort	Artemisia ludoviciana	ARLU	2	0 - 17	0 - 1
nuttails evolvulus	Evolvulus nuttallianus	EVNU	2	0 - 17	0 - 1
rush skeletonplant	Lygodesmia juncea	LYJU	2	0 - 17	0 - 1
silverleaf scurfpea	Pedionelum argophyllum	PEAR6	2	0 - 17	0 - 1
slimflower scurfpea	Psoralidium tenuiflorum	PSTE5	2	0 - 17	0 - 1
stickleaf mentzelia	Mentzelia decapetala	MEDE2	2	0 - 17	0 - 1
Texas croton	Croton texensis	CRTE4	2	0 - 17	0 - 1
western ragweed	Ambrosia psilostachya	AMPS	2	0 - 17	0 - 1
winged buckwheat	Erigonum alatum	ERAL4	2	0 - 17	0 - 1

## ECOLOGICAL SITE DESCRIPTION

- Plant community composition
- Reference Plant community





## Characteristics

### Conservation Plant Characteristics

*Bouteloua gracilis* (Willd. ex Kunth) Lag. ex Griffiths  
blue grama  
BOGR2

### Summary

Duration	Perennial	Federal T/E Status
Growth Habit	Graminoid	National Wetland Indicator
Native Status	L48 (N), CAN (N)	

### Growth Requirements

Adapted To Coarse Textured Soils	Yes	Moisture Use	Medium
Adapted To Medium Textured Soils	Yes	pH, Minimum	6.6
Adapted To Fine Textured Soils	Yes	pH, Maximum	8.4
Anaerobic Tolerance	None	Planting Density Per Acre, Minimum	
CaCO <sub>3</sub> Tolerance	Medium	Planting Density Per Acre, Maximum	
Cold Stratification Required	No	Precipitation, Minimum	8
Drought Tolerance	High	Precipitation, Maximum	22
Fertility Requirement	Low	Root Depth, Minimum	16
Fire Tolerance	High	Salinity Tolerance	Medium
Frost Free Days, Minimum	142	Shade Tolerance	Intolerant
Hedge Tolerance	None	Temperature, Minimum (°F)	-43





# SEEDBED PREPARATION

---





# Seedbed Preparation



# SEEDING





# MULCHING

---



The background image shows a natural landscape. In the foreground, there is a field of tall green grass interspersed with numerous purple flowers, possibly heather or similar wildflowers. Behind this field is a thick, dark green line of trees and shrubs. The background beyond the trees shows rolling green hills under a clear sky.

# Monitoring and management

THANK YOU!  
Questions?