

Misplaced Priorities:

Aligning with Private Landowner Goals

Listening to and Respecting Landowner Priorities



Purgatoire Watershed
WEED MANAGEMENT
COLLABORATIVE



Spanish Peaks-Purgatoire River
Conservation District



RiversEdge West
RESTORE + CONNECT + INNOVATE

Shelly L. Simmons

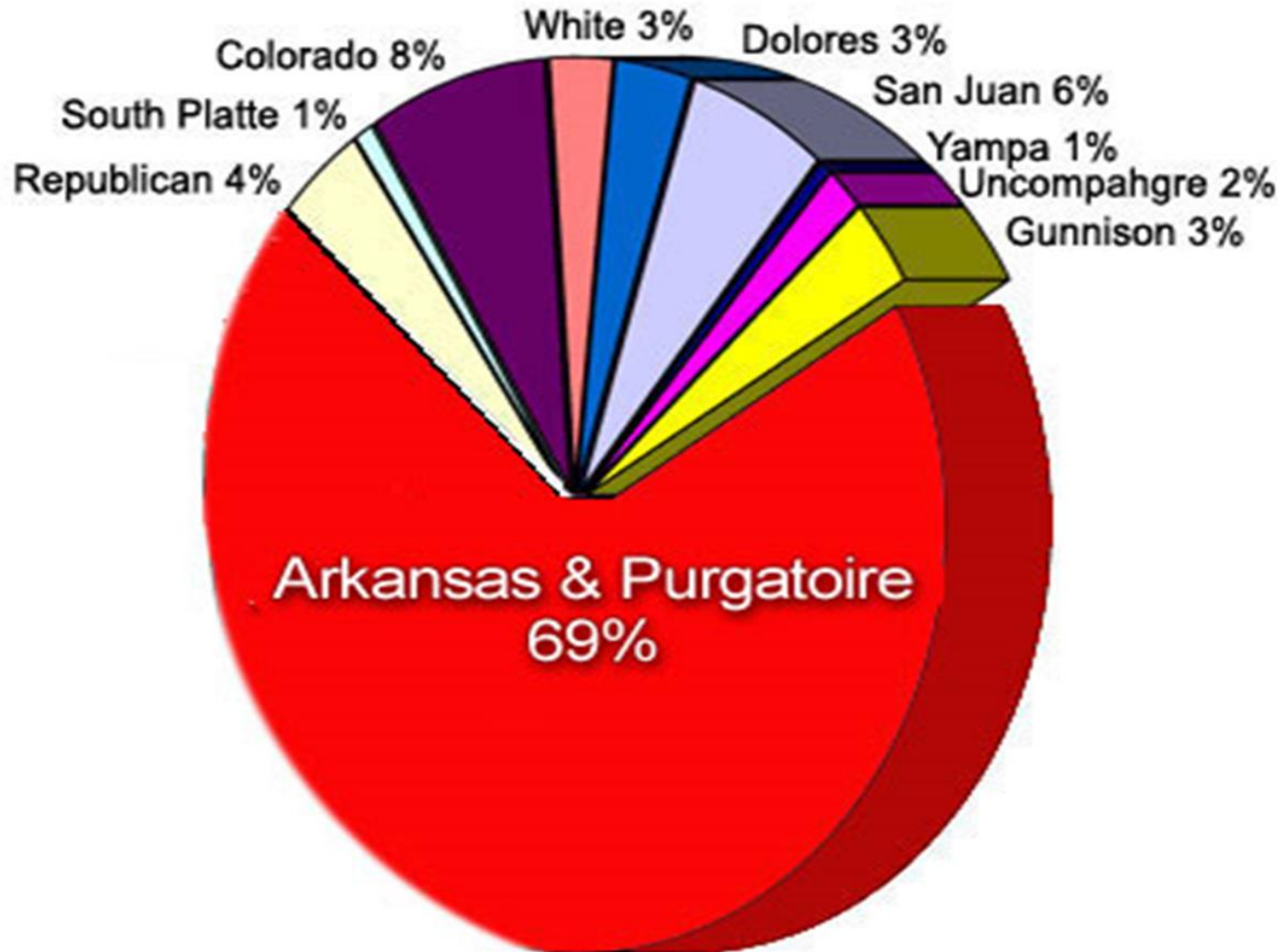
Purgatoire Watershed Weed Management Collaborative

*Spanish Peaks-Purgatoire River Conservation District/
RiversEdge West*

Purgatoire River Watershed



2008 REW TRO Mapping DATA



CREATION OF **Partnership**

2003 Initiation of *Tackling Tamarisk on the Purgatoire (TTP)* Partnership

2004-2015 Over 1,000 acres of woody invasive control completed in upper watershed



Taking it to the next **LEVEL** CREATION OF **PWWMC**

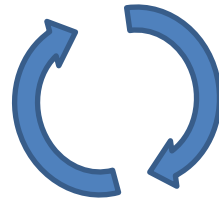
2016 - PWWMC Formalization

SPPRCD

Landowner Programs, Fiscal Agent

REW

Employer – PWWMC Coordinator



Purgatoire Watershed
WEED MANAGEMENT
COLLABORATIVE

Goal

Maintain, protect, and improve the ecological integrity, agricultural productivity, recreational and hunting opportunities, and the economy of the Purgatoire River Watershed

ACTIONS



Control Noxious Weeds.

Improve and Protect Native vegetative cover and, thus, native wildlife habitat; agricultural productivity; recreational and hunting opportunities; drinking water supplies; local economies.

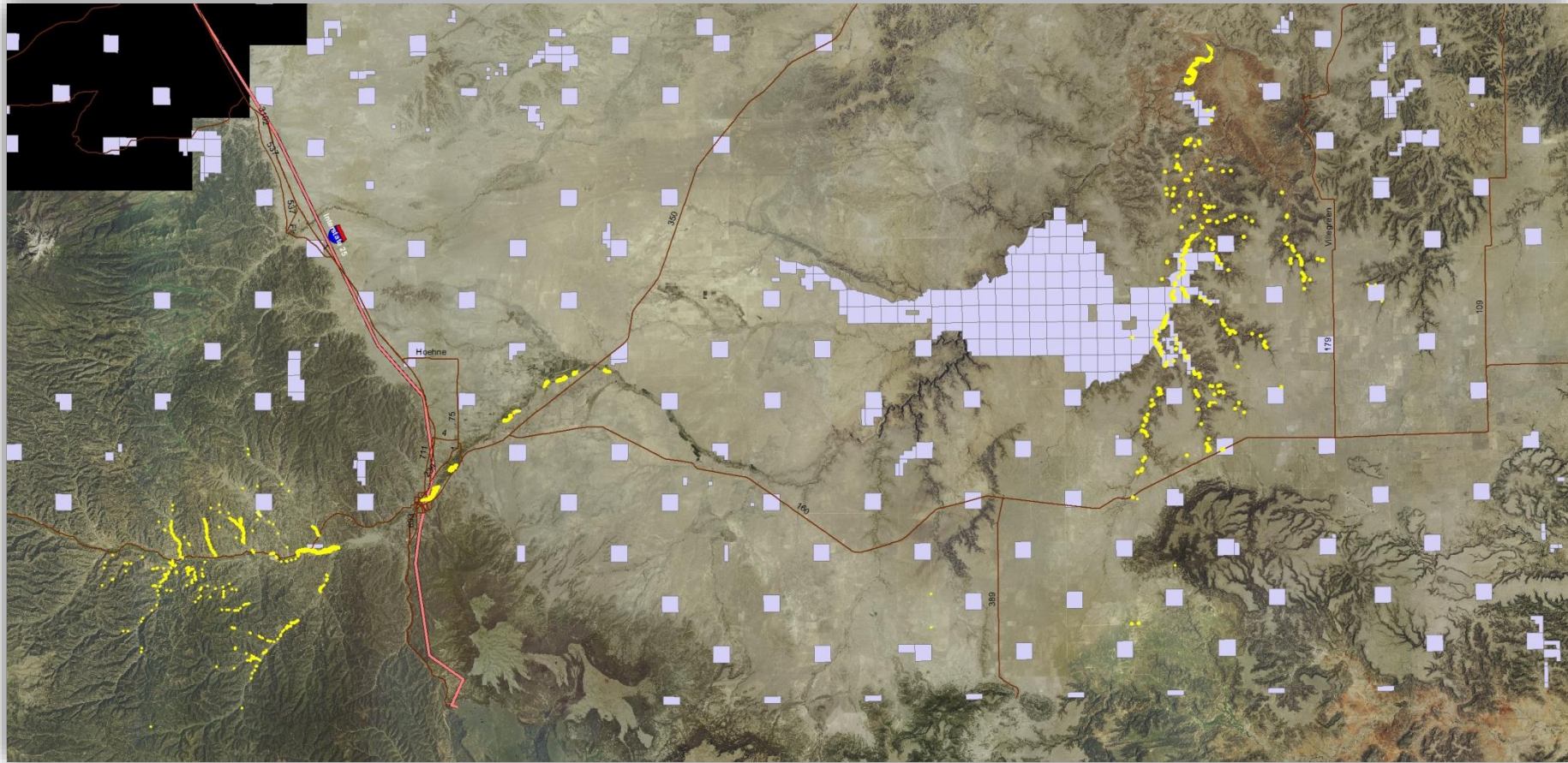
Increase Public awareness and support of watershed health.

Establish PWWMC as a permanent program within SPPRCD.

PWWMC Accomplishments

- **IGA with Las Animas County**
 - County List A (African Rue) – 300 acres
 - County ROW – ~900 miles (recon, mapping, treatments)
- **Tercio Good Neighbor Cost Incentive Program**
 - 30 Acres on 3 properties
- **Riparian Restoration Cost Incentive (focus on Tamarisk/Russian-olive)**
 - 300 Acres on ~20 properties
- **Russian Knapweed Initiative Cost Incentive**
 - 300 Acres on ~5 properties
- **Noxious Weed Cost Share**
 - 1,000 Acres impacted on over 30 properties
- **Educational Outreach**
 - Direct outreach to over 500 youth/adults
- **Fundraising**
 - Over \$400K

TRO Treatments – 2005-2018



Southeastern CO





RESPECTFUL Relationships

Public professionals often seek a new
“tool” or “technique” for public
engagement,
but there is no such thing.

There are only **RELATIONSHIPS**
with others, and practices that enhance
or thwart the strengthening of those
relationships.

How **PWWMC** has been **SUCCESSFUL**

Build Trust



Recognize and Adapt to Realities
of Landowners



Establish Relationships

Building TRUST

When trust is established, knowledge moves quickly and informally!

Effective knowledge transfer is often informal and improvisational. Human beings seem hard-wired to learn from personal contact with others.

Steps for Building TRUST

- How does this natural resource issue *affect* their operation?
- How will your program *benefit* their operation?
- Highlight *OPTIONS* for addressing their issues
 - Highlight average *costs/inputs* and...
- Highlight how you can and/or cannot *assist* them

REALITIES of Landowners

There is no faster way to fail at a partnership than to overlook the realities of those whom you wish to develop a partnership with.



Maximum cash leverage for project implementation =
Less cash input required from landowners =
Increased Participation



Landowner Perspective

- **Goals for *their* land**
 - Grazing: Improve grass production, improve ability to gather cattle
 - Hunting: Improve native habitat, access to river
 - Farming: Improve crop production
 - Wildlife: Improve bird habitat
- **Limitations**
 - Financial
 - Time



Happy Landowner = Best Advocate



There are only RELATIONSHIPS with others, and practices that enhance or thwart the strengthening of those relationships.

- STOP here For Wednesday Session
- Continue from here for Thursday Workshop Session

Private Lands Programs



Program Structure

- **Simple application, plan and sign-up process**
- **Run Program through local Conservation District if possible**
 - Tons of flexibility
 - Substantially less overhead
 - Direct line to landowners
- **Financially attractive and feasible**
 - Cost incentive (instead of cost-share) for large \$ projects
 - Cost Share for smaller \$ projects (i.e. 50/50)

Program Structure...

- At least a five year landowner commitment to maintain project (this is their 'cost share')
 - Provide tools and assistance
 - Treatment tracking log
 - Annual monitoring/photo points

A	B	C	D	E	G	H	F	I
Date(s) or Range of Dates	Treatment Implemented. List all treatments, even if overlapping; document <i>species treated, equipment/method used, herbicide used</i>	Acres Treated	Who did the work?	Cost of LandO Labor: -\$125/hr for ATV/heavy equip, -\$50/hr hand spraying/other hand labor,	Approx. time to complete (hrs)	Total LandO Labor (multiply E x G for each row)	Herbicide Cost (Please include paid invoice)	Cost of hired contractor (Please include copy of paid invoice)
<i>Example 5/14 - 5/22/2019</i>	<i>Canada thistle, ATV boom sprayer, foliar application, Milestone herbicide mixed with MSO at rate recommended on label</i>	<i>10</i>	<i>Donald Duck</i>	<i>\$125 – for ATV use</i>	<i>5 hrs</i>	<i>\$125 x 5hr = \$625</i>		<i>Did not use Commercial Applicator</i>
<i>5/14/2019</i>	<i>Purchased Milestone herbicide and MSO (see attached receipt)</i>						<i>\$250 – purchase herbicide</i>	
	TOTAL ACRES	10		TOTALS	5 hrs	\$625	\$250	\$0

Program Structure EXAMPLES

Cost Incentive for High \$ Project - Tamarisk and Russian-olive Removal/Riparian restoration

- Program pays for all initial treatment costs
 - Phase I – biomass removal
 - Phase II – Vegetative monitoring using reference sites (pre-herbicide tx)
 - Phase III – Herbicide Tx to TRO Re-growth and herbaceous noxious weeds
 - Phase IV – Vegetative monitoring (post herbicide tx)
 - Phase V – active revegetation (if needed)
- Five year commitment from landowner to maintain project area
REQUIRED
 - Herbicide tx to TRO/herbaceous noxious weeds
 - Seasonal Grazing deferment (if needed)
 - Project manager does annual inspections and assists with photo points and monitoring

TRO/Riparian Restoration



Herbaceous Noxious Weed Program

- Sign-up on a rolling basis; one year from sign-up to do treatments and accrue costs
- \$1,000 maximum reimbursement per landowner, per year
- Reimbursed 50% of total cost
- LandO Provides documentation of applicable costs



- Highly recommend using Licensed Applicators (especially for those with no application experience)
- Five year monitoring and maintenance highly recommended, but not required
- Landowners can sign up annually if funds are available



Steps for Success

- Host landowner workshops/forums where potential projects may occur
- Go to them – let all local ag, conservation organizations know you want to work with them; propose how you all can work together to achieve common land management goals



Food for Thought

- Accident and liability waiver for programs
- Working with CD Board
 - Protocol for board member sign-up for programs
 - Protocol for board members submitting bids for project contract work
 - Protocol for Independent Contractors
 - Job bid announcements
 - Adopt job bid policy
 - Acceptance and notification process
 - Independent contractor agreement
 - Adopt a CORA policy



Purgatoire Watershed

WEED MANAGEMENT COLLABORATIVE

Shelly L. Simmons

Purgatoire Watershed Weed Management Collaborative

***Spanish Peaks-Purgatoire River Conservation District/
RiversEdge West***