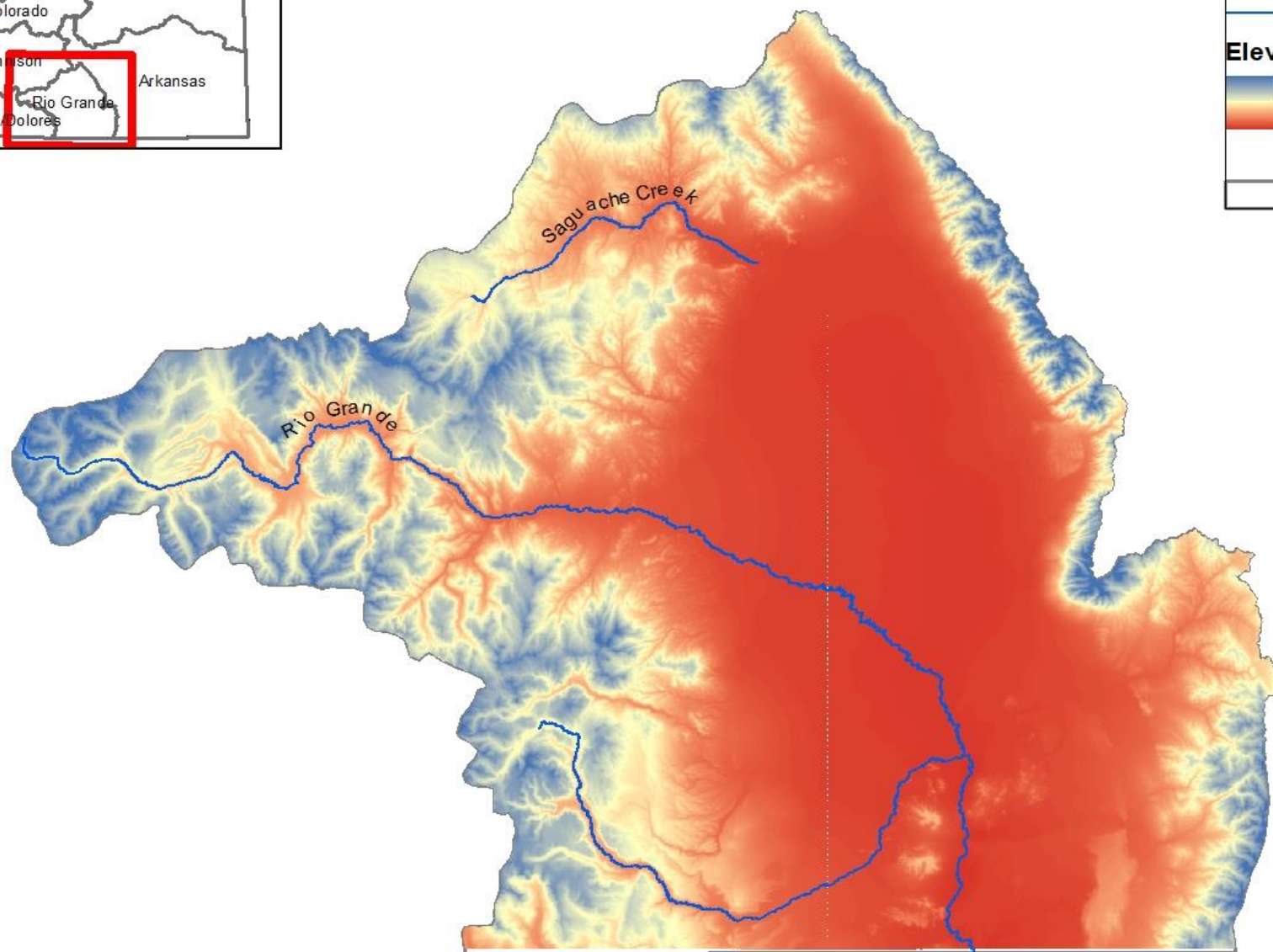
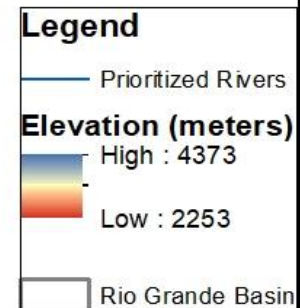
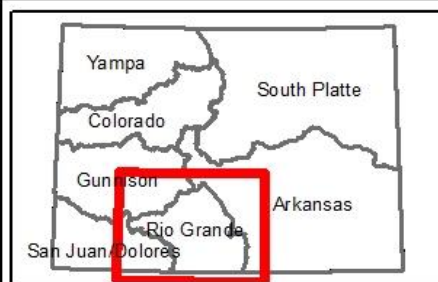


# Rio Grande Basin

## Stream Management Planning



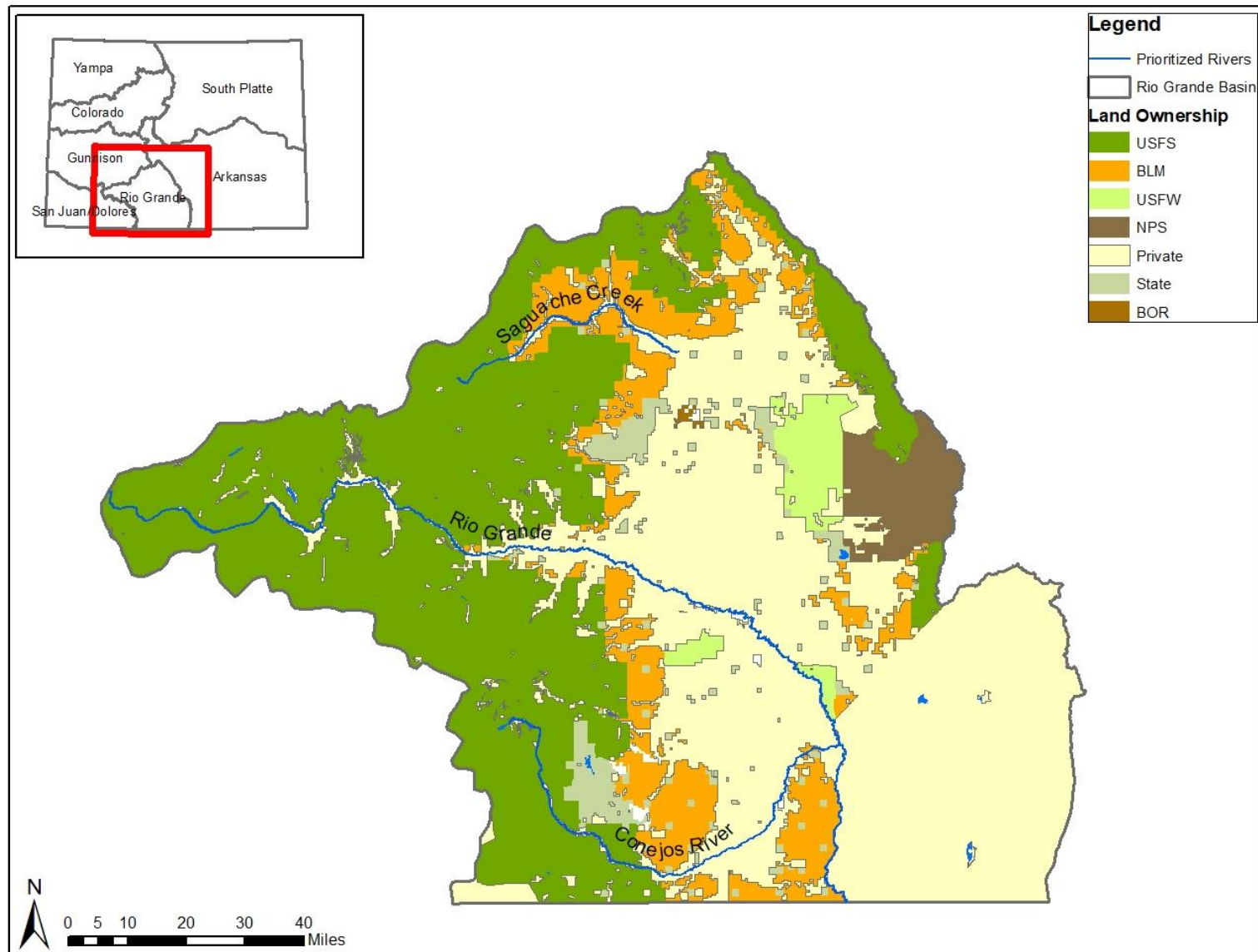




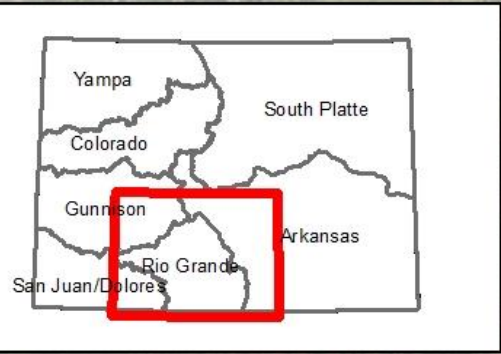
# SMP Objectives

- Involve stakeholders
- Define environmental, recreational, and community values
- Assess condition and function of priority streams
- Using results from conditions assessments, identify areas where values and needs are not being met
- Develop goals and actions to address these issues

# Prioritized Streams: 338 miles







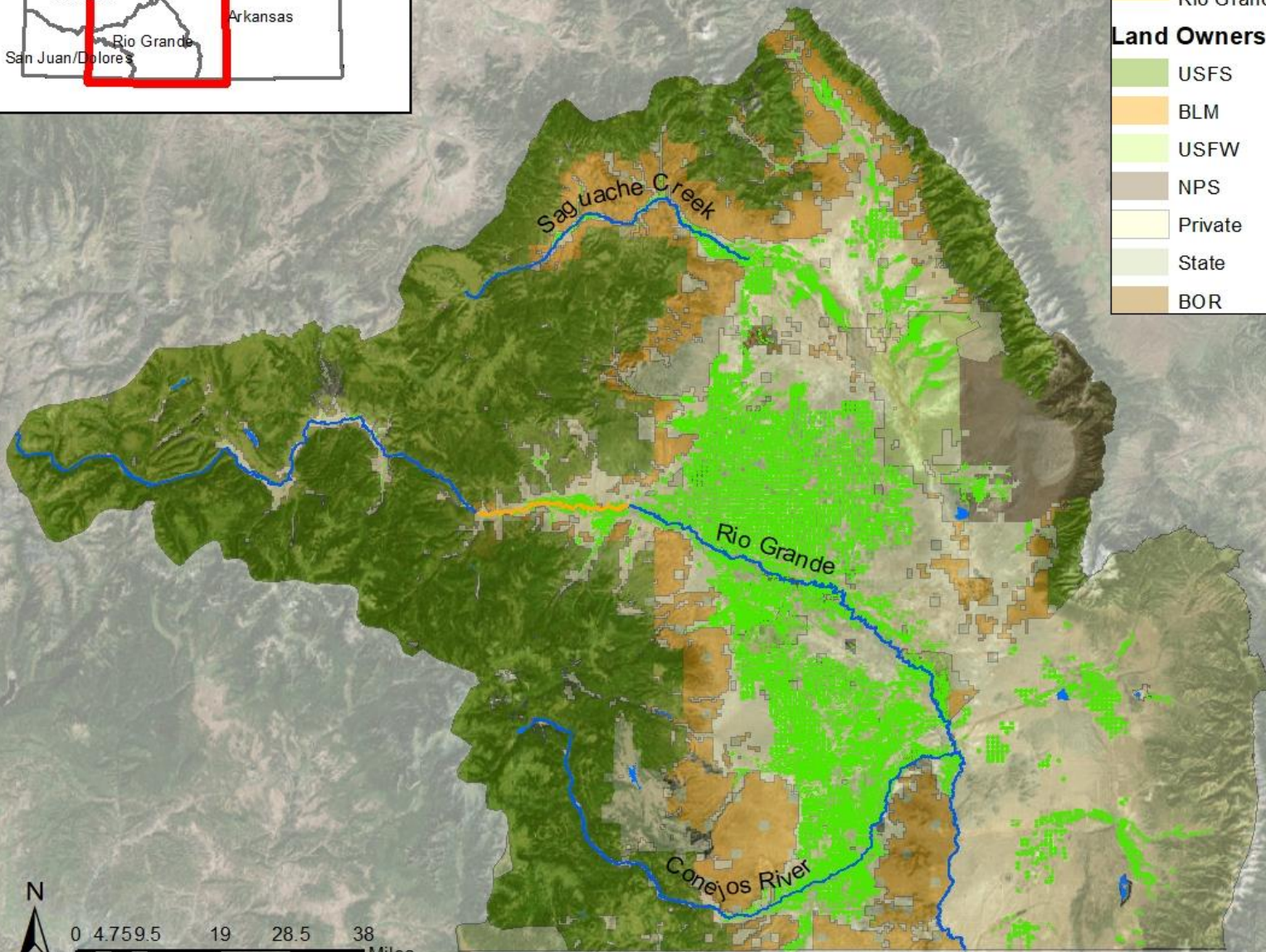
# Irrigated Lands: 523,000 acres

## Legend

- Rio Grande Basin
- Prioritized Streams
- Irrigated Lands
- Rio Grande Basin\_Gold Medal Streams

## Land Ownership

- USFS
- BLM
- USFW
- NPS
- Private
- State
- BOR



0 4.75 9.5 19 28.5 38 Miles



A scenic landscape featuring a wide river in the foreground, reflecting the sky. The river flows from the bottom left towards the right. The banks are lined with lush green trees and shrubs. In the background, there are rolling hills and mountains under a bright blue sky with scattered white clouds. The overall scene is peaceful and natural.

Who Are The Stakeholders?







# Collaborative Opportunities

- Include a diverse group of water users
- Utilize stakeholders' local knowledge for condition assessment as well as project prioritization
- Interdisciplinary, holistic approach – Draw from multiple scientific assessments to make management decisions
- Reservoir operators and ditch companies



## CONDITIONS ASSESSMENT



## STAKEHOLDERS



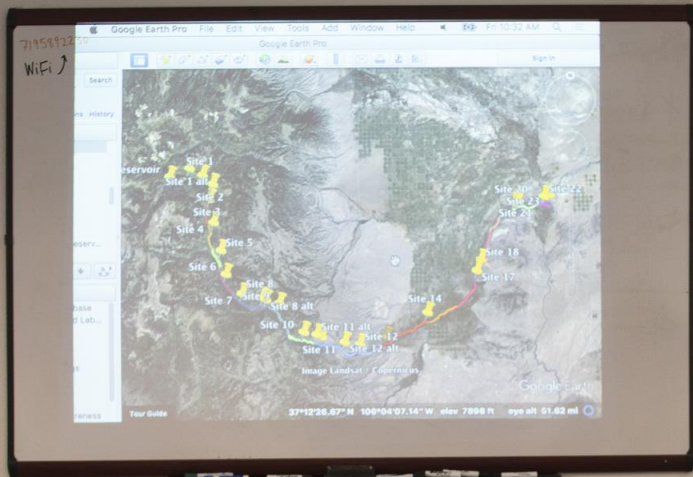
## MANAGEMENT DECISIONS



## PRIORITIZE PROJECTS

## TECHNICAL ADVISORY TEAM





FARM CREDIT  
Farm Credit of Southern Colorado  
www.farmcredit.com

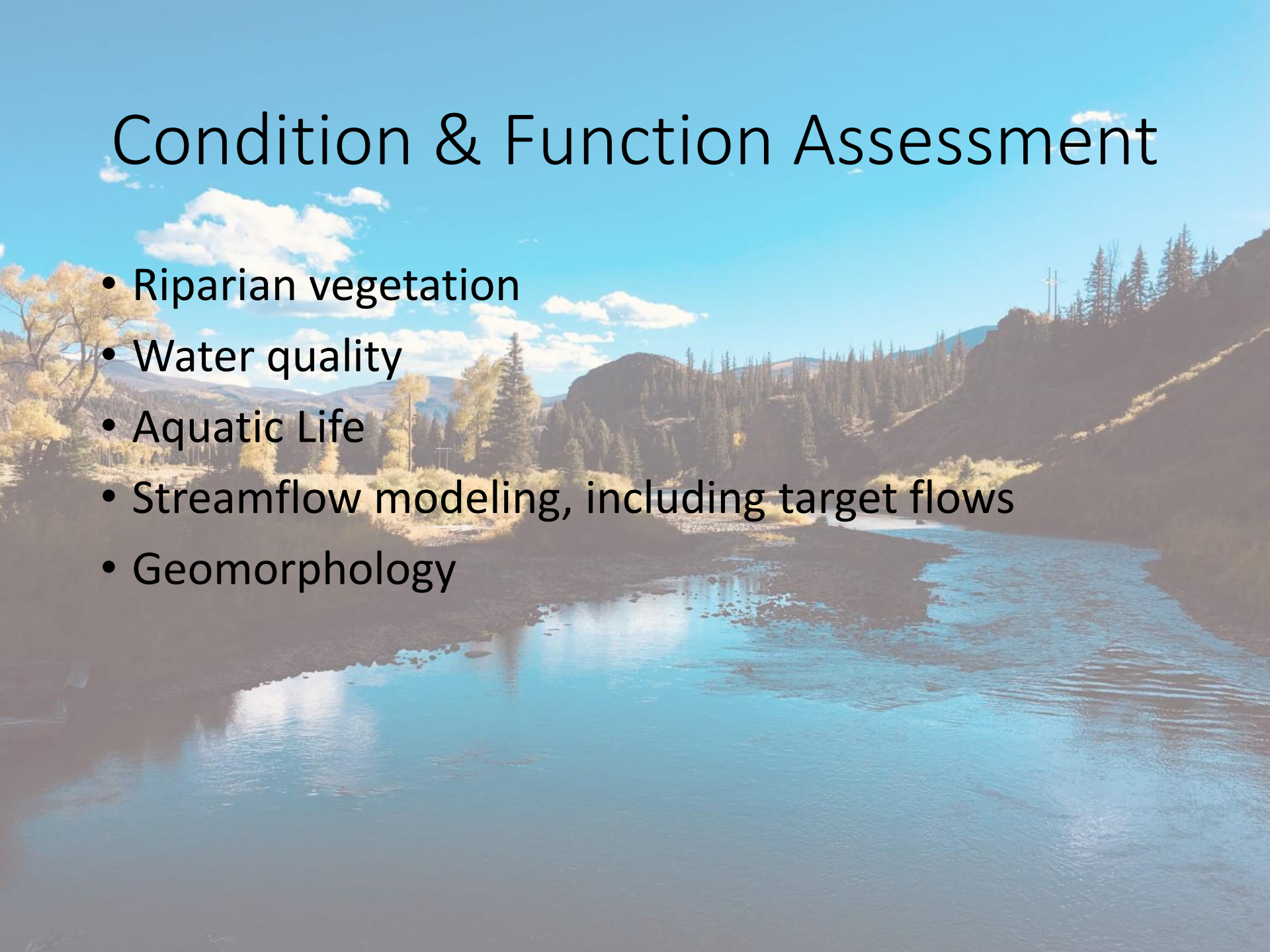
JANUARY	FEBRUARY	MARCH
1	1	1
2	2	2
3	3	3
4	4	4
5	5	5
6	6	6
7	7	7
8	8	8
9	9	9
10	10	10
11	11	11
12	12	12
13	13	13
14	14	14
15	15	15
16	16	16
17	17	17
18	18	18
19	19	19
20	20	20
21	21	21
22	22	22
23	23	23
24	24	24
25	25	25
26	26	26
27	27	27
28	28	28
29	29	29
30	30	30
31	31	31

WILL LOON  
NETWORK NAME:  
SUNBELT-0415-0073-2  
PASSWORD:  
719581230



# Condition & Function Assessment

- Riparian vegetation
- Water quality
- Aquatic Life
- Streamflow modeling, including target flows
- Geomorphology





# Riparian Vegetation





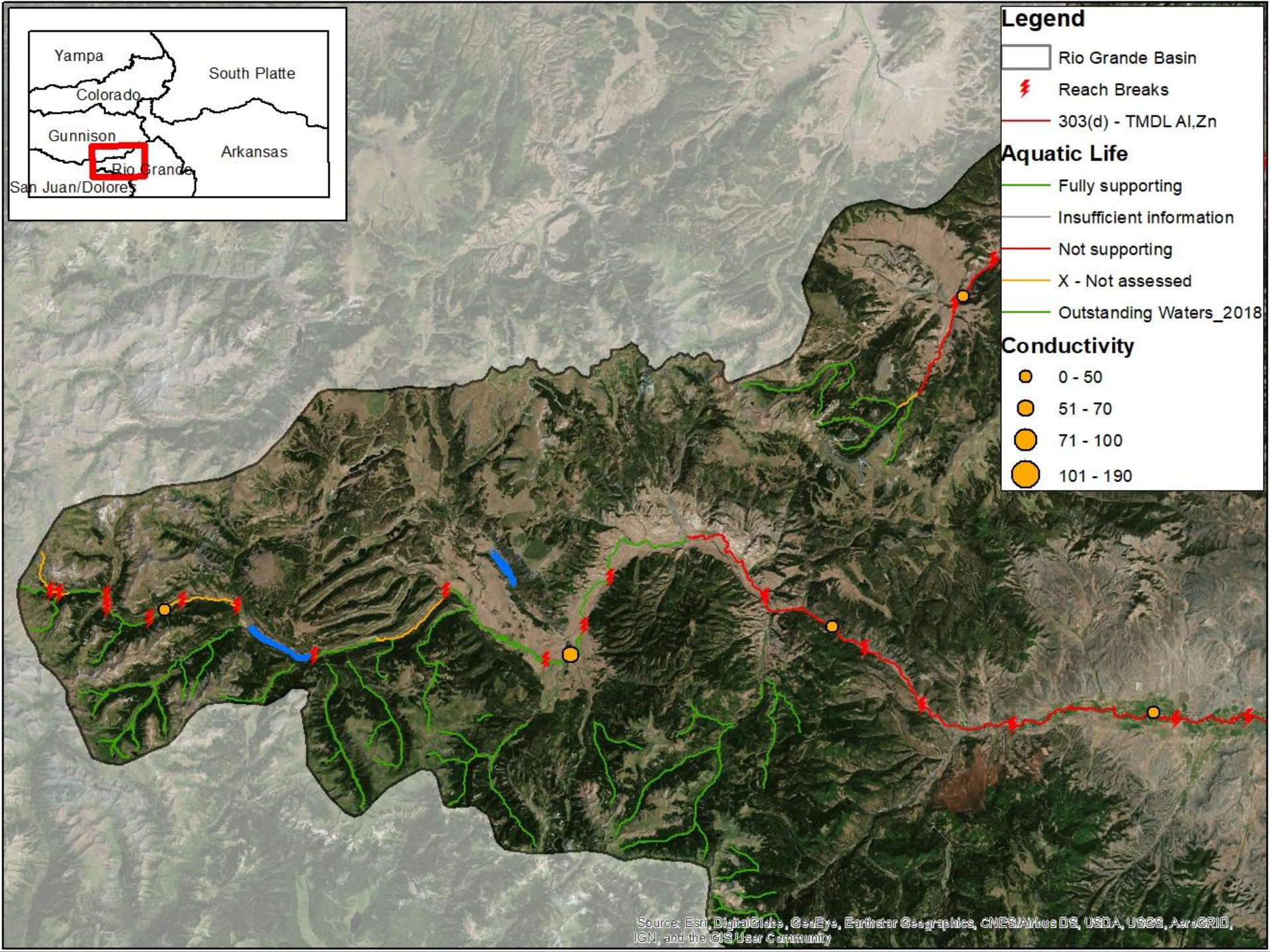




# EIA Scorecard

Observer: W. McBride	Wt	Field Rating	Field Points	Calc Points	Calc Rating
<b>Overall Ecological Integrity Score and Rank</b>				<b>3.27</b>	<b>B+</b>
<b>Rank Factor: LANDSCAPE CONTEXT</b>	<b>0.30</b>			<b>3.31</b>	<b>B+</b>
<b>LANDSCAPE METRICS</b>	<b>0.33</b>			<b>3.00</b>	<b>B+</b>
L1. Contiguous Natural Land Cover	1	B	3		
L2. Land Use Index	1	B	3		
<b>BUFFER METRICS</b>	<b>0.67</b>			<b>3.46</b>	<b>B+</b>
B1. Perimeter with Natural Buffer	n/a	A	4		
B2. Width of Natural Buffer	n/a	A	4		
B3.1. Condition of Natural Buffer - Veg	n/a	C	2		
B3.2. Condition of Natural Buffer - Soils	n/a	A	4		
<b>Rank Factor: CONDITION</b>	<b>0.70</b>			<b>3.25</b>	<b>B+</b>
<b>VEGETATION METRICS</b>	<b>1</b>			<b>3.25</b>	<b>B+</b>
V1. Native Plant Species Cover	1	C-	1.5		
V2. Invasive Nonnative Plant Species Cover	1	A	4		
V3. Native Plant Species Composition	1	B	3		
V4. Vegetation Structure	1	A	4		
V5. Regen. of Native Woody Species (opt.)	1	B	3		
V65. Coarse and Fine Woody Debris (opt.)	1	A	4		









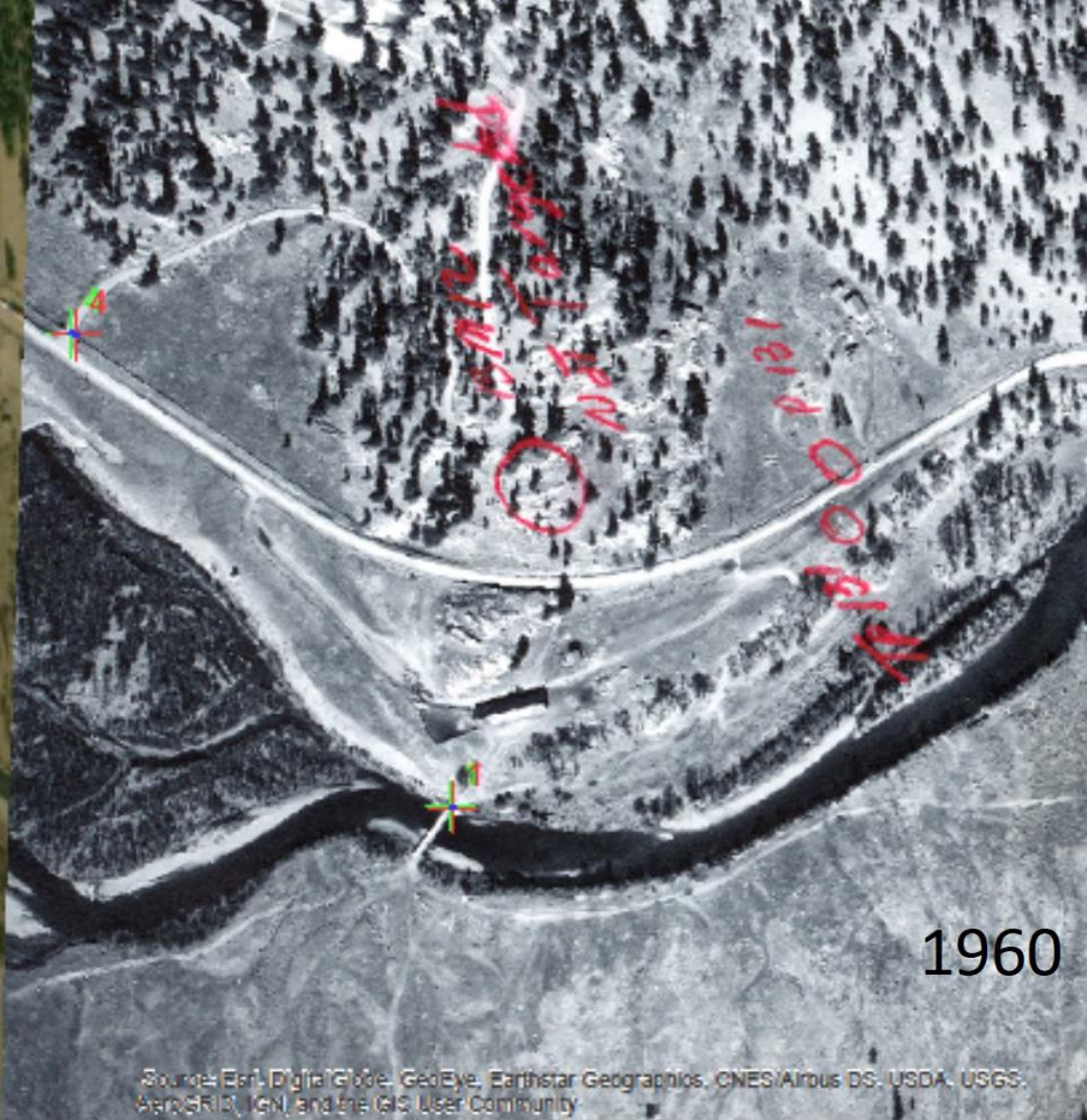








2017

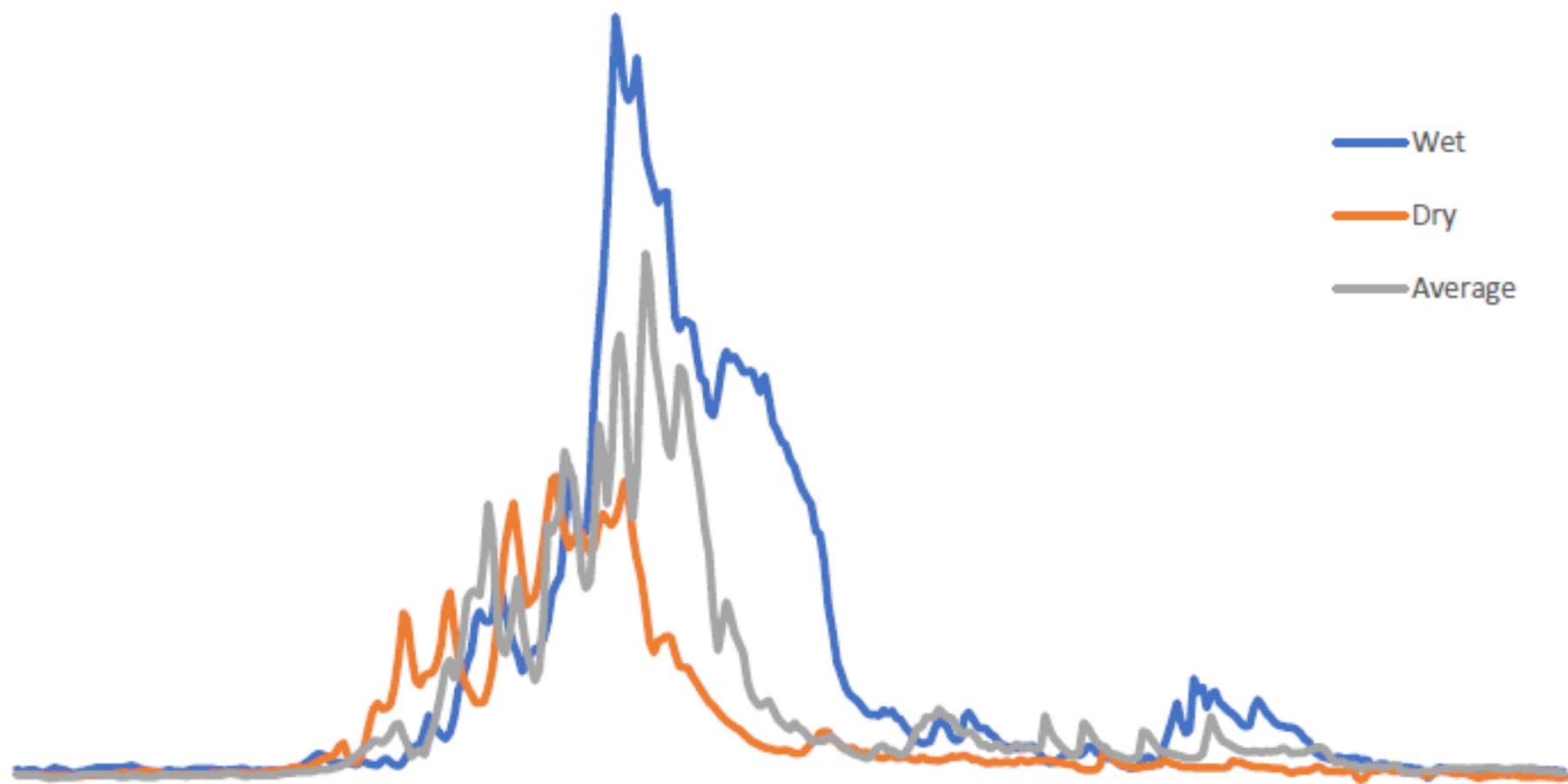


1960

Source: Esri, DigitalGlobe, GeoEye, Earthstar Geographics, CNES/Airbus DS, USDA, USGS, AeroGRID, IGN, and the GIS User Community



## Rio Grande near Del Norte, CO



Daily Wet, Dry, and Average Flow for the Rio Grande near Del Norte, CO Streamgage







## CONDITIONS ASSESSMENT



## STAKEHOLDERS



## MANAGEMENT DECISIONS



## PRIORITIZE PROJECTS

## TECHNICAL ADVISORY TEAM





























A scenic landscape photograph of a river flowing through a valley. The river is in the foreground, reflecting the sky and surrounding greenery. The banks are covered with lush vegetation, including trees and shrubs. In the background, there are rolling hills and mountains under a bright blue sky with scattered white clouds. The overall scene is peaceful and natural.

# Questions?

[daniel@riograndeheadwaters.org](mailto:daniel@riograndeheadwaters.org)

(415) 233-3883