

# Mesic Meadow Restoration & Conservation



Clint Wirick

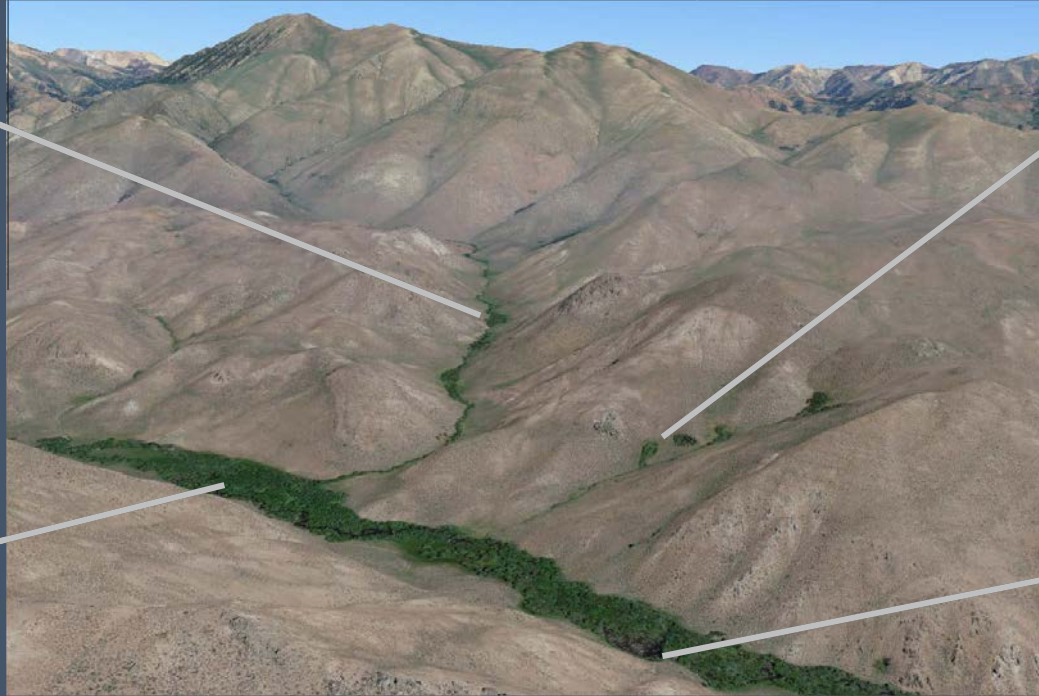
USFWS Partners For Fish and Wildlife Program  
Wildlife Biologist and Utah Program Coordinator



# Wet habitats in the Sagebrush Steppe



**Meadows, Bogs**



**Springs, Seeps**



**Streams, Rivers**



**Wetlands**



# WHY? GOALS?



Soil Moisture, Productivity, & Resiliency



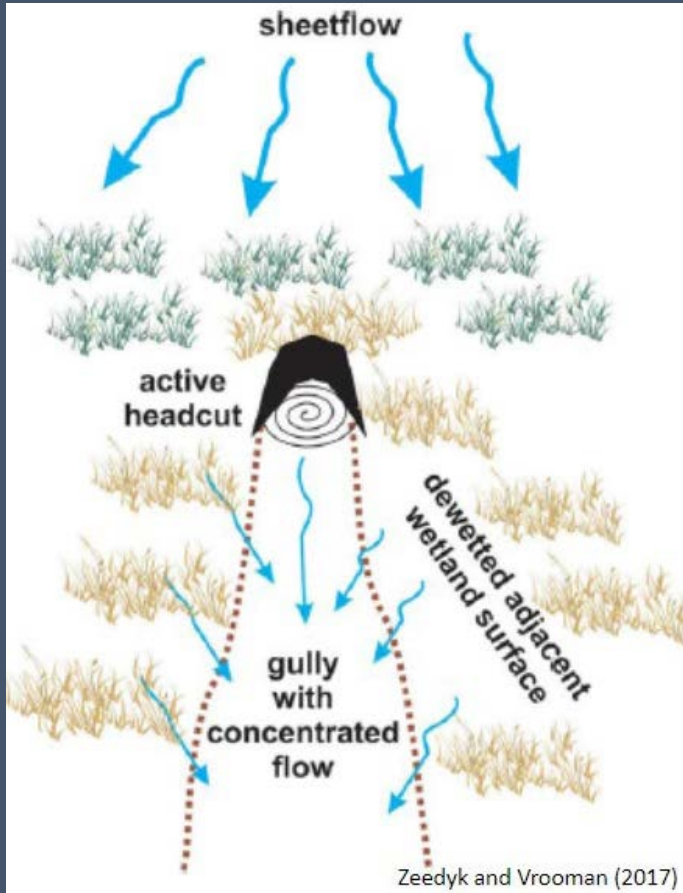
# Does the system have a channel? Should it?

Most mesic meadow systems SHOULD  
NOT have a clearly defined channel.

Surface water historically flowed as SHEET  
FLOW across the entire surface.

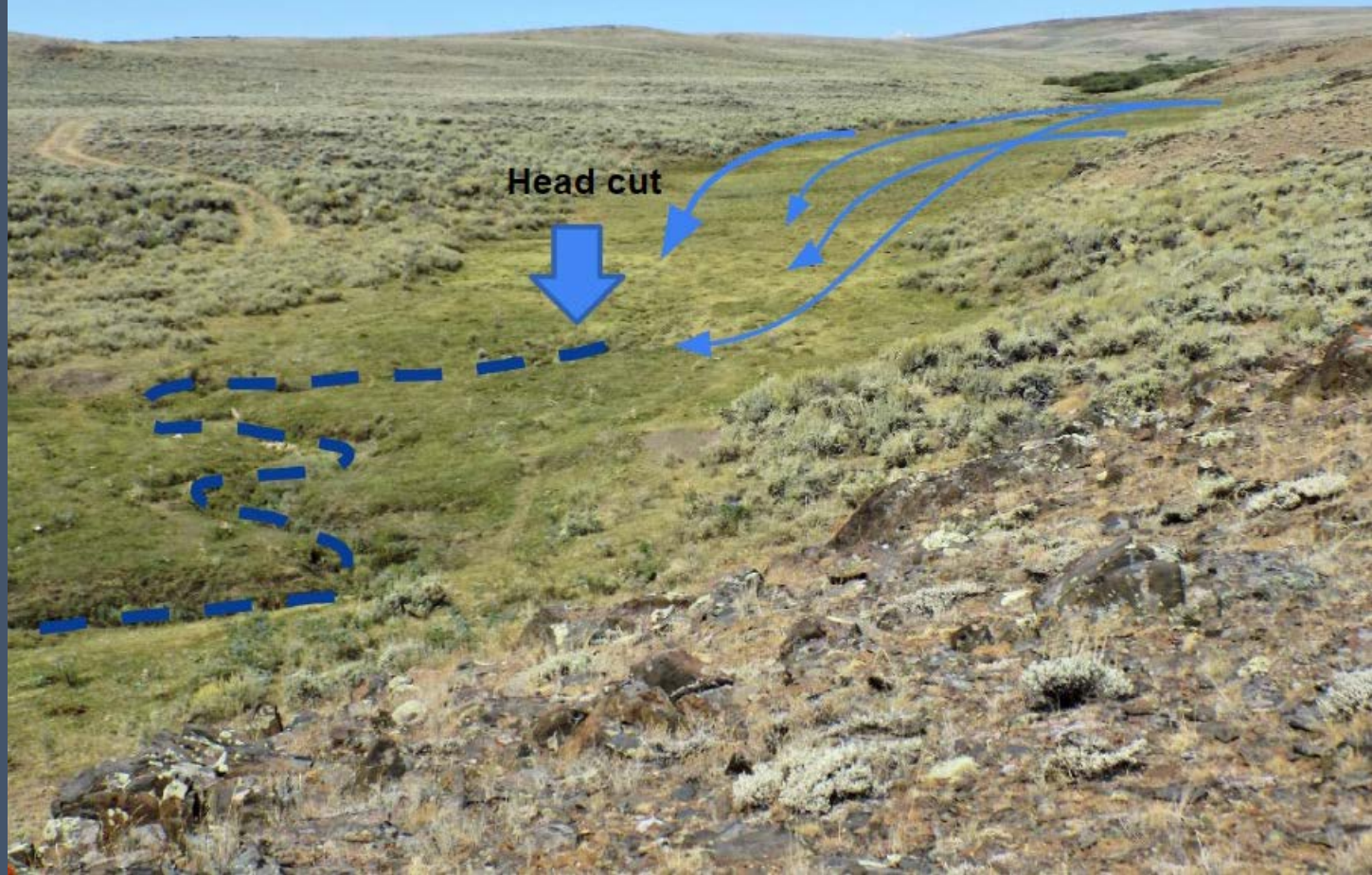


# Sheet Flow vs. Concentrated Flow



- **SHEET FLOW:**
  - moves slower, spread out, shallow
  - has time to infiltrate,
  - has minimal erosive force.
  
- **CONCENTRATED FLOW:**
  - moves rapidly,
  - rushes off the landscape,
  - has many times the erosive force.

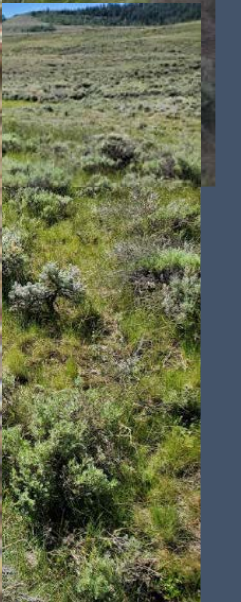
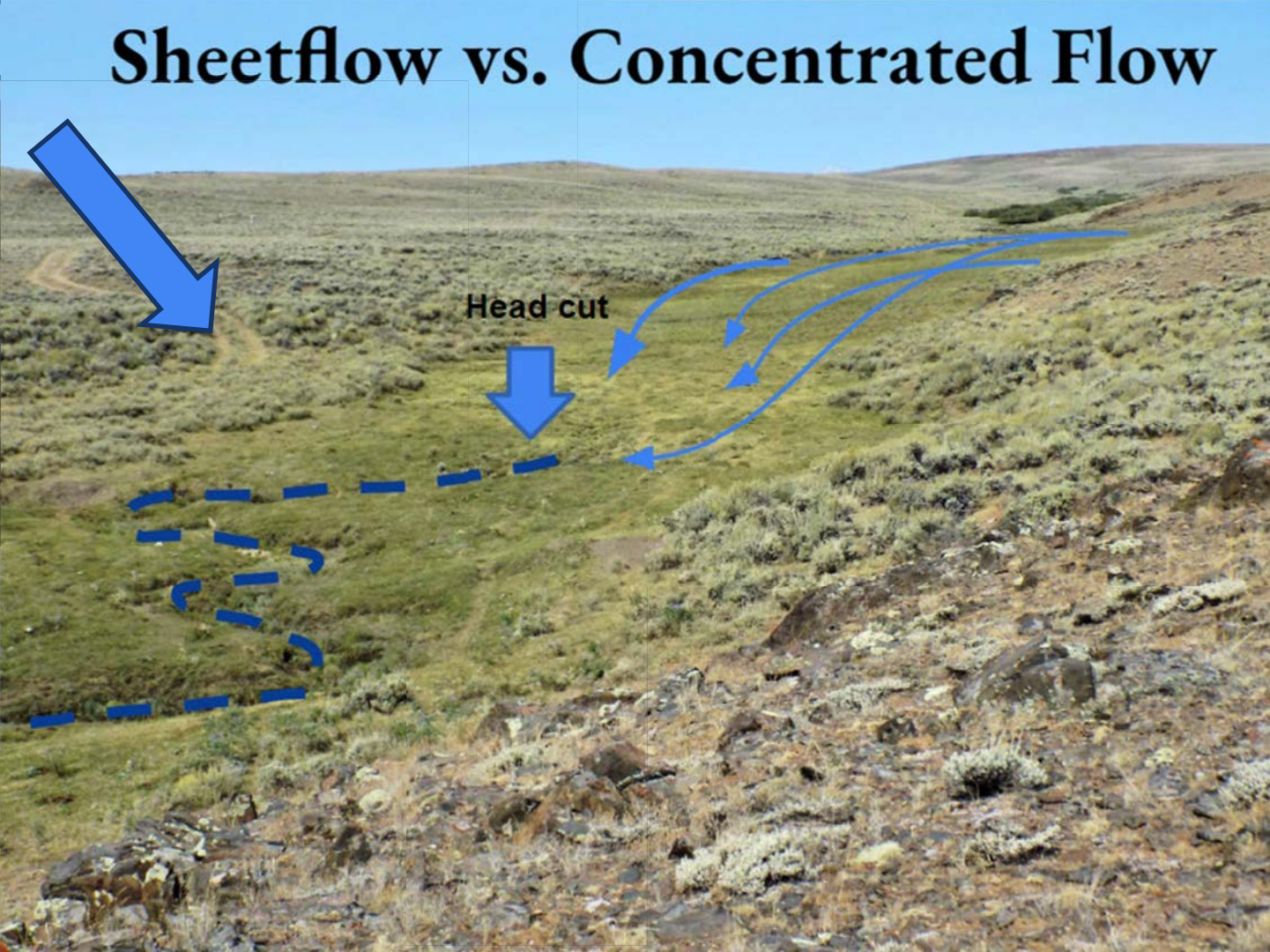
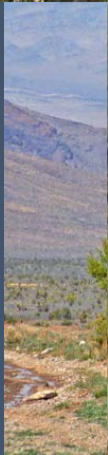
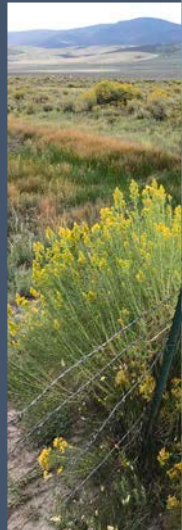
# Sheetflow vs. Concentrated Flow



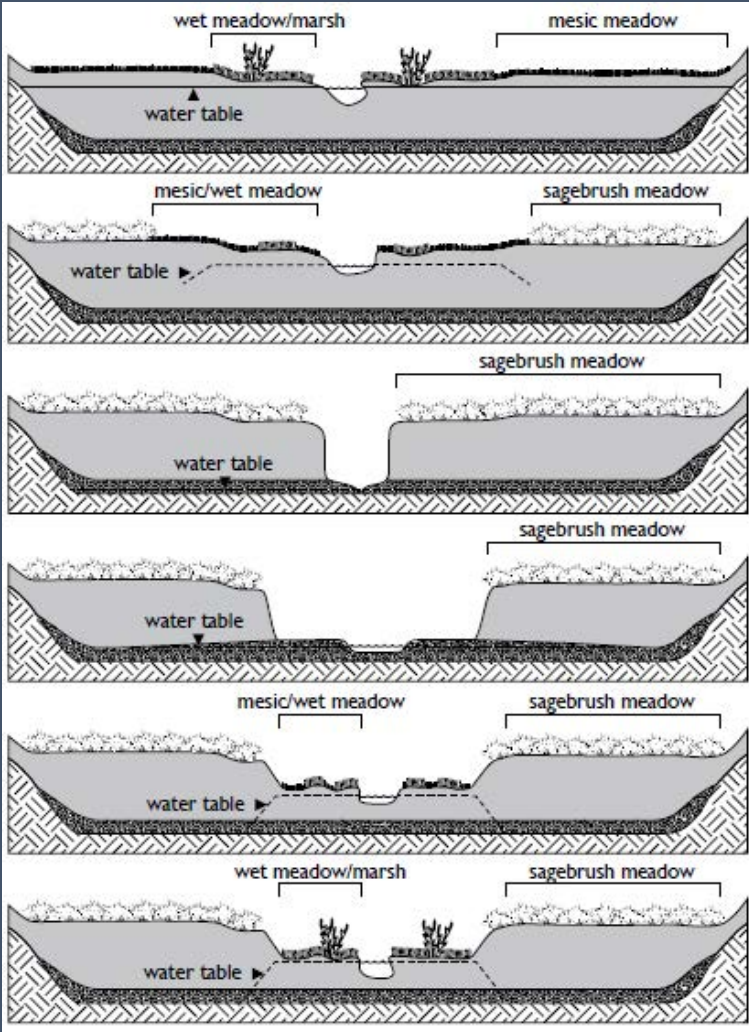


What

# Sheetflow vs. Concentrated Flow



Channel incision is a widespread problem impairing several processes



Preservation

Restoration



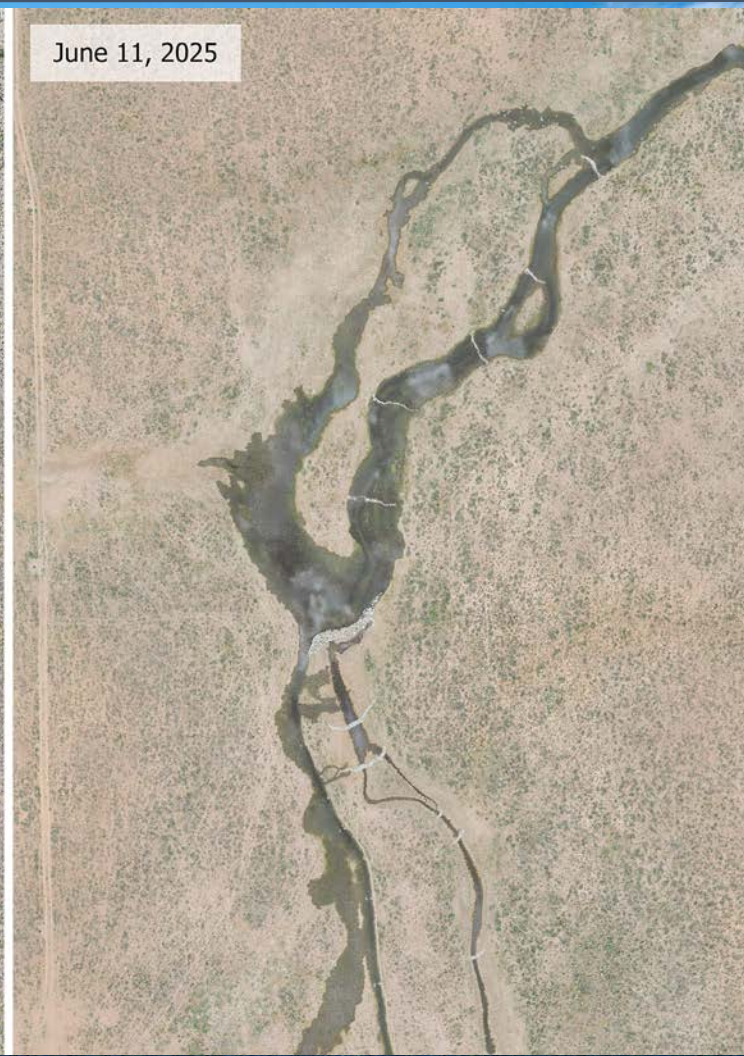
# Does LTPB it work?



August 5, 2023



June 11, 2025



- **Batman & Robin**
- **He-Man & She-Ra**
- **Beavis & Butthead**
- **Flush and Shoot Conservation**

- **Applied principles lead to organized CREATIVITY**



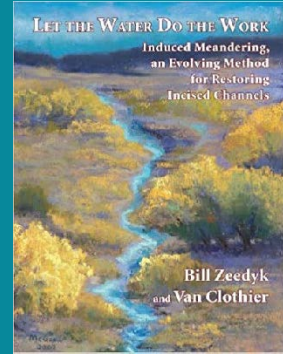
# A Contractor's Journey working in Central Utah's Wet Meadows

Jeff Adams, TerraSophia  
LLC

RiversEdge West Conference,  
Grand Junction, CO  
03/03/26



# Some of My Mentors and Inspirations



# Building Relationships with People on the Land



# Spending Time Reading the Landscape, Learning, and Planning in the Field



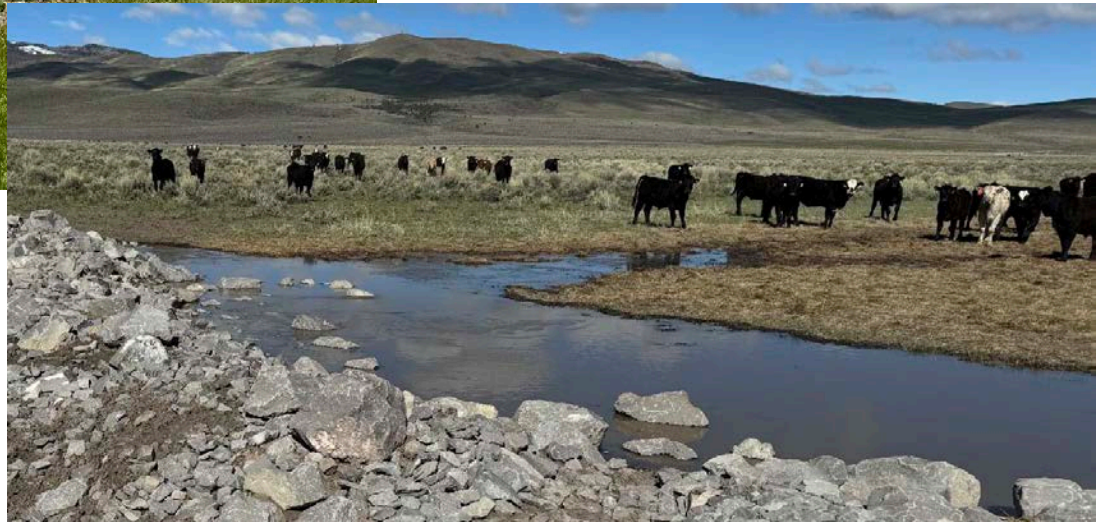
# Assembling Teams



# Crafting a Work Plan to Match the Scale of Opportunity



# Integrating with Ranch Operations



# Delivering on Logistics and Project Flows







# Maximizing Wetness and Enhancing Habitat Through Thoughtful and Repeated Effort



# Hybridizing Structures for Resilience: Diverse, Multi-Functional, and Process-Based













Jeff Adams  
[www.TerraSophia.com](http://www.TerraSophia.com)

Thank You!!

Clint Wirick  
[clint\\_wirick@fws.gov](mailto:clint_wirick@fws.gov)



Beaver Dam Complex on Mill Creek, Moab, UT

