



DEVELOPING THE MONTANA STATEWIDE
**WOODY INVASIVE
MANAGEMENT PLAN**

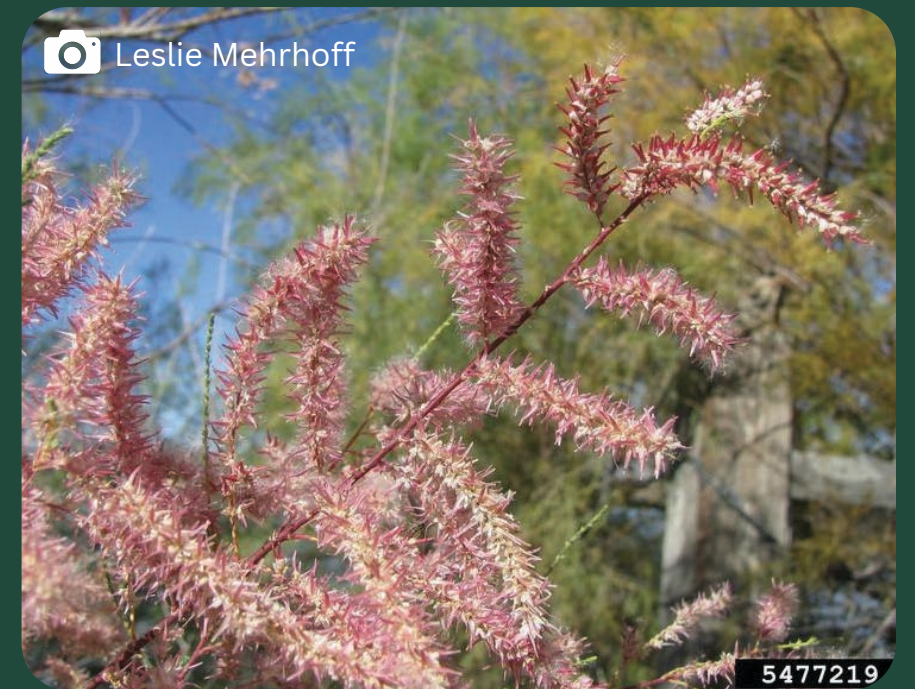
FOCAL SPECIES



COMMON
BUCKTHORN



RUSSIAN OLIVE



SALTCEDAR

BACKGROUND

**VARIOUS MANAGEMENT
& RESEARCH EFFORTS**

In Need of Greater Collaboration
(Both Geographically & Among Agencies)



YRCDC RIVER STUDY REPORT

Included Woody Invasive Plant Management
as a Key Recommendation



NWTF GRANT

Sought to Gain Collaboration Across All
Watersheds & Land Management Agencies/NGOs

THE CONTRACT

Coordination

Seek additional funding sources, collaborate with the Core Group, & produce educational/outreach materials.

Working Group Meetings

Plan and execute 3 Working Group meetings.

Science Advisory Panels

Plan and execute 2 Science Advisory Panels.

Management Plan

Complete a draft of a statewide management plan for public review.

THE CONTRACT

Coordination

Seek additional funding sources, collaborate with the Core Group, & **produce educational/outreach materials.**

Working Group Meetings

Plan and execute **3 Working Group meetings.**

Science Advisory Panels

Plan and execute **2 Science Advisory Panels.**

Management Plan

Complete a draft of a **statewide management plan** for public review.

THE ISSUES



STATEWIDE IMPACTS



FUNDING



NEED FOR COLLABORATION



SPECIES-BASED CONSIDERATIONS

THE ISSUES



STATEWIDE IMPACTS



FUNDING

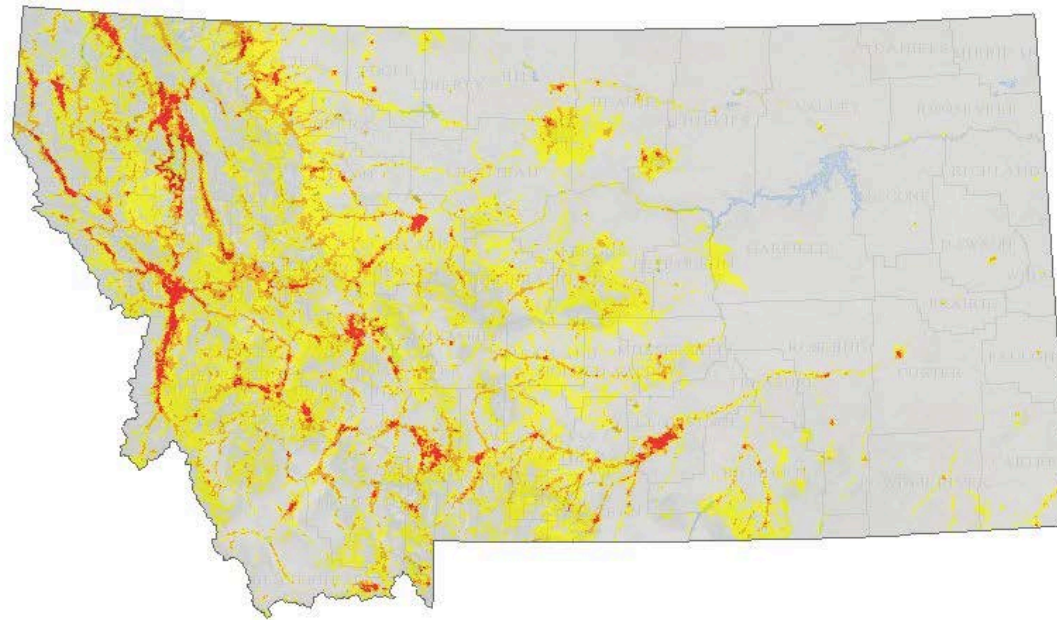


NEED FOR COLLABORATION

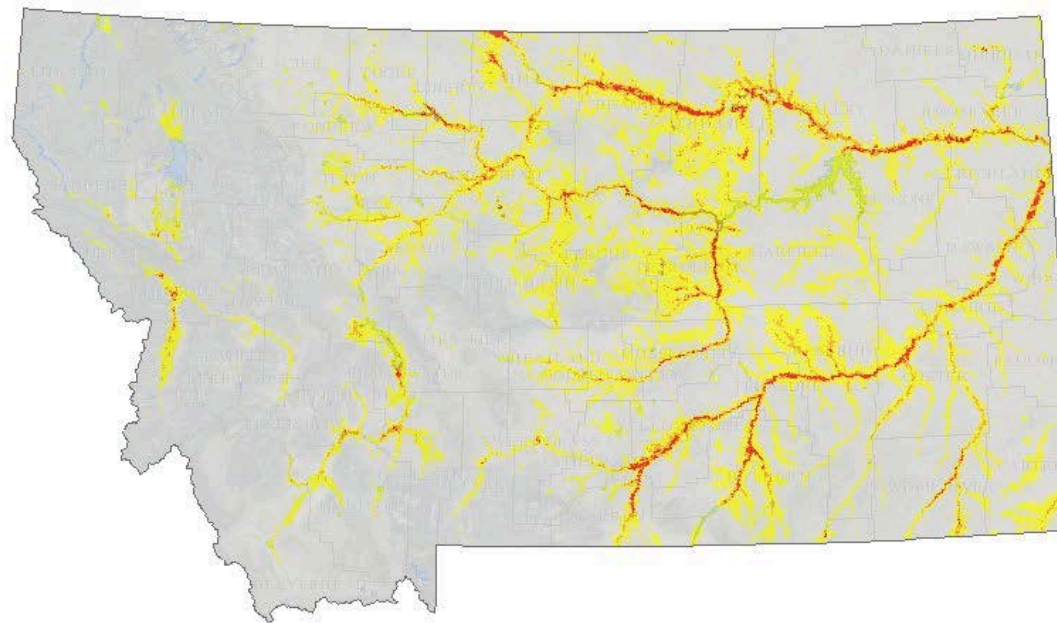


SPECIES-BASED CONSIDERATIONS

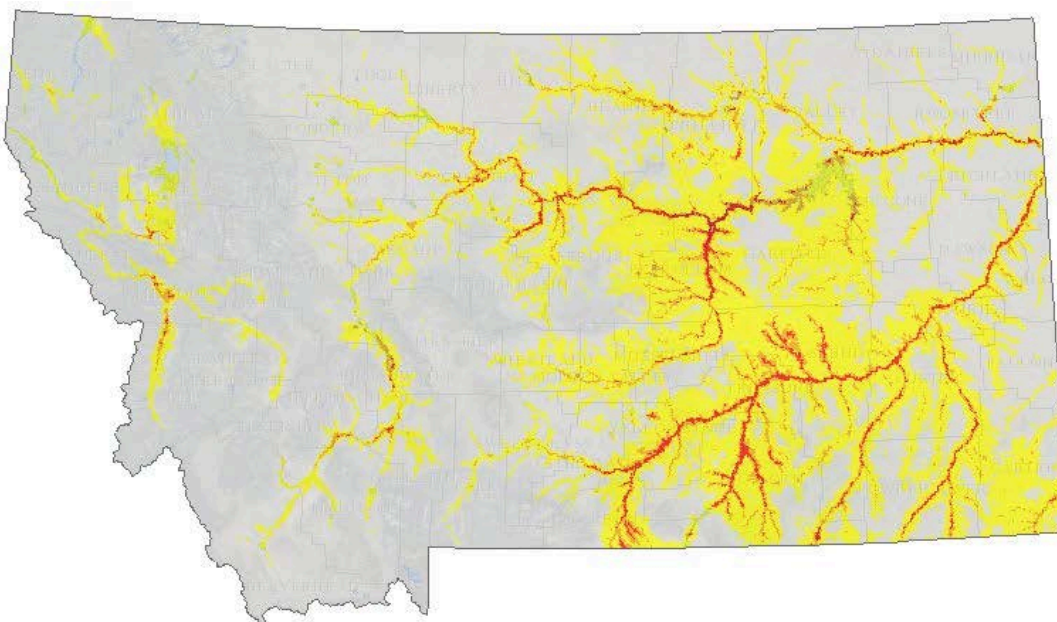
HABITAT SUITABILITY



CB



RO

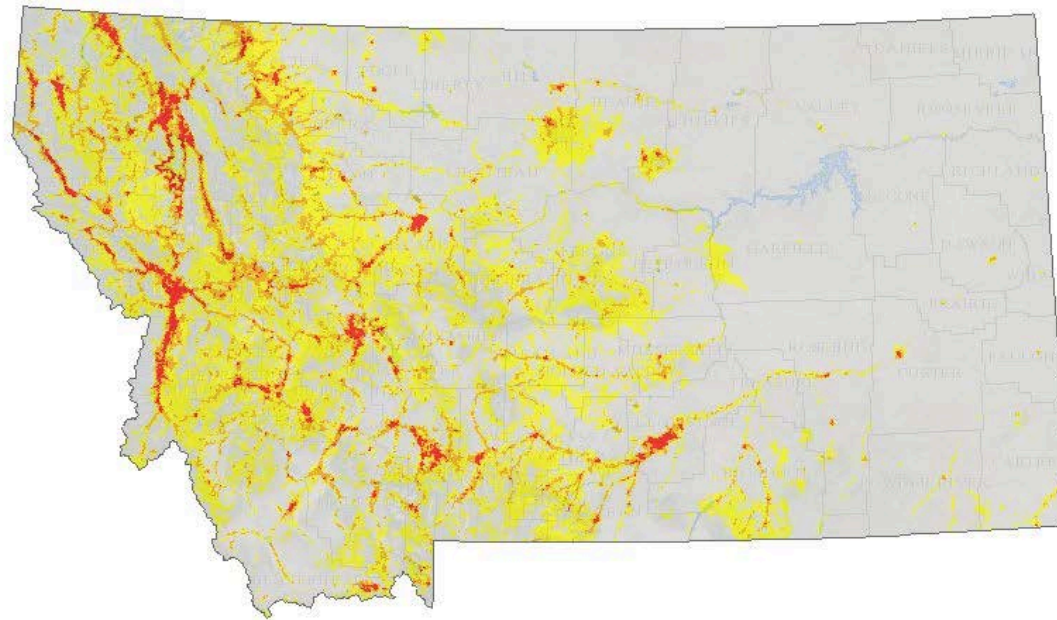


SC

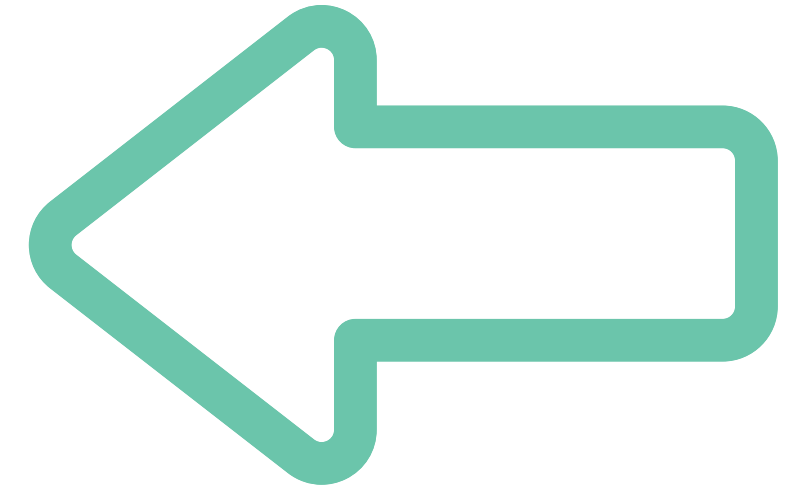
Legend:

- Generally Unsuitable
- Low Suitability
- Moderate Suitability
- Optimal Suitability

HABITAT SUITABILITY



CB



RO

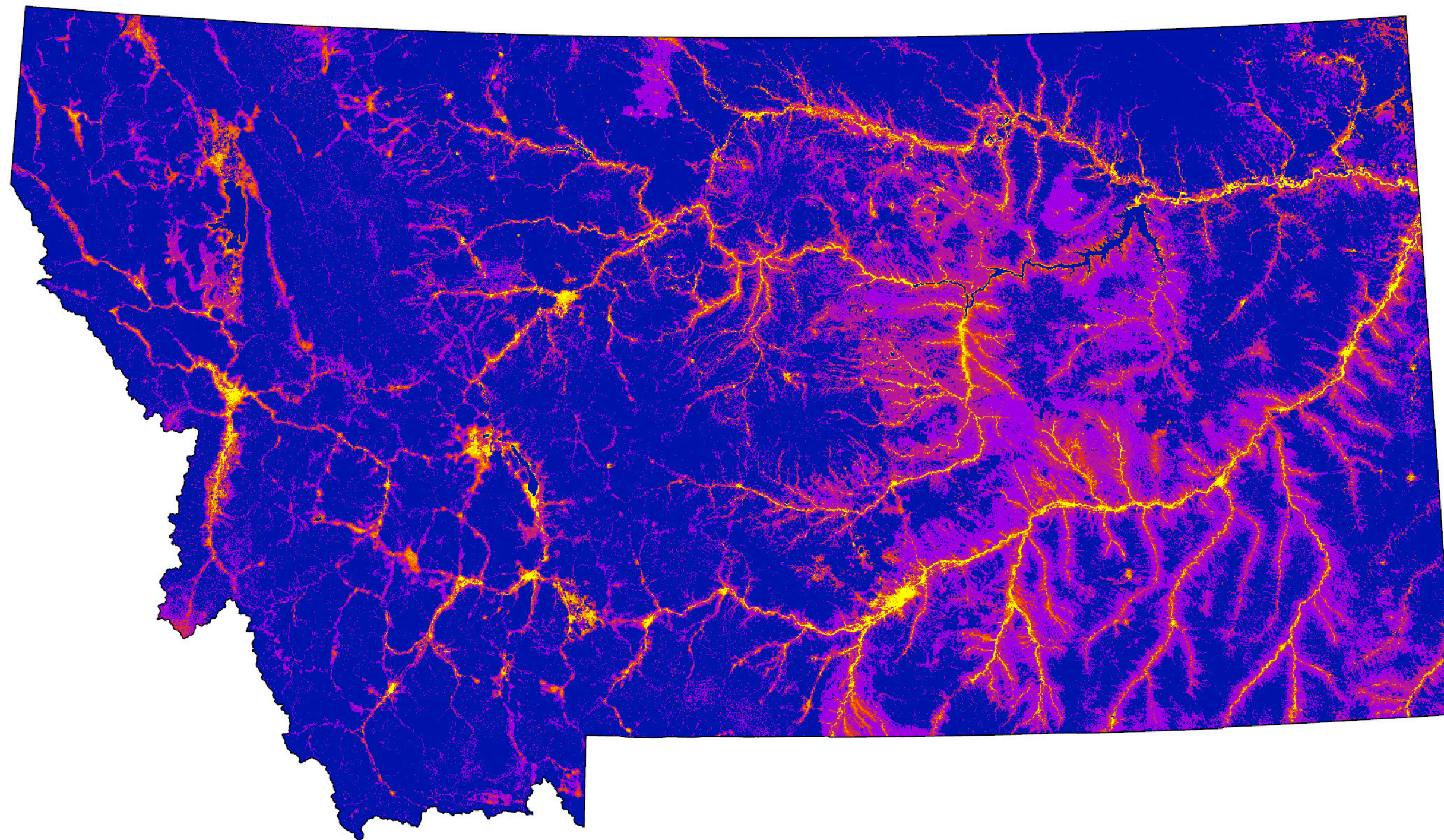


SC

Legend:

-  Generally Unsuitable
-  Low Suitability
-  Moderate Suitability
-  Optimal Suitability

CUMULATIVE INVASION RISK



Lower
Cumulative
Invasion Risk



Higher
Cumulative
Invasion Risk

THE ISSUES



STATEWIDE IMPACTS



FUNDING



NEED FOR COLLABORATION

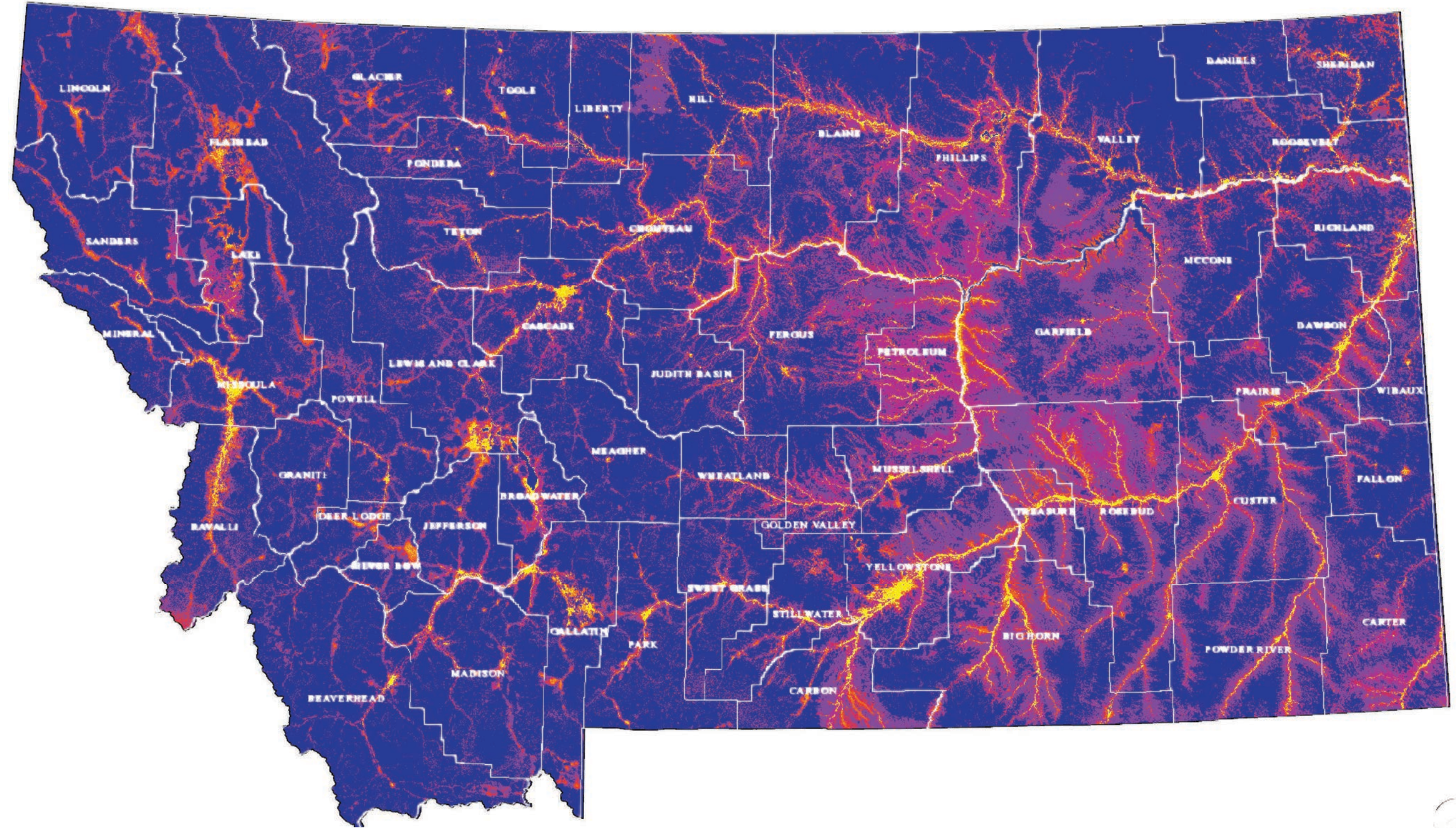


SPECIES-BASED CONSIDERATIONS

BOUNDARIES?

FOR EXAMPLE:

MRCDC = 15 CDS
YRCDC = 13 CDS



Lower
Cumulative
Invasion Risk



Higher
Cumulative
Invasion Risk

THE ISSUES



STATEWIDE IMPACTS



FUNDING



NEED FOR COLLABORATION



SPECIES-BASED CONSIDERATIONS

LIMITED FUNDING

NOXIOUS WEED TRUST FUND

WEED DISTRICTS

LACK OF SUCCESS WITH LARGER REGIONAL PROPOSALS



THE ISSUES



STATEWIDE IMPACTS



FUNDING



NEED FOR COLLABORATION



SPECIES-BASED CONSIDERATIONS

COMMON BUCKTHORN

ISSUE

- Need Greater Understanding of Range
- Public Needs Education for Proper ID
- Need More Information on Effective Treatment

RUSSIAN OLIVE



ISSUE

- Public Perceptions
- Be Cognizant & Strategic

RUSSIAN OLIVE



ISSUE

- Public Perceptions
- Be Cognizant & Strategic



ACTION

- Statewide Land Manager Survey
- Consulted with Wyoming Dept of Ag

SALT CEDAR



 Molly Masters

ISSUE

- Momentum
- Funding
- Collaboration

SALT CEDAR



 Molly Masters

ISSUE

- Momentum
- Funding
- Collaboration



ACTION

- Seek Long-Term Funding
- Management Innovations

THE CONTRACT

Coordination

Seek additional funding sources, collaborate with the Core Group, & **produce educational/outreach materials.**

Working Group Meetings

Plan and execute **3 Working Group meetings.**

Science Advisory Panels

Plan and execute **2 Science Advisory Panels.**

Management Plan

Complete a draft of a **statewide management plan** for public review.

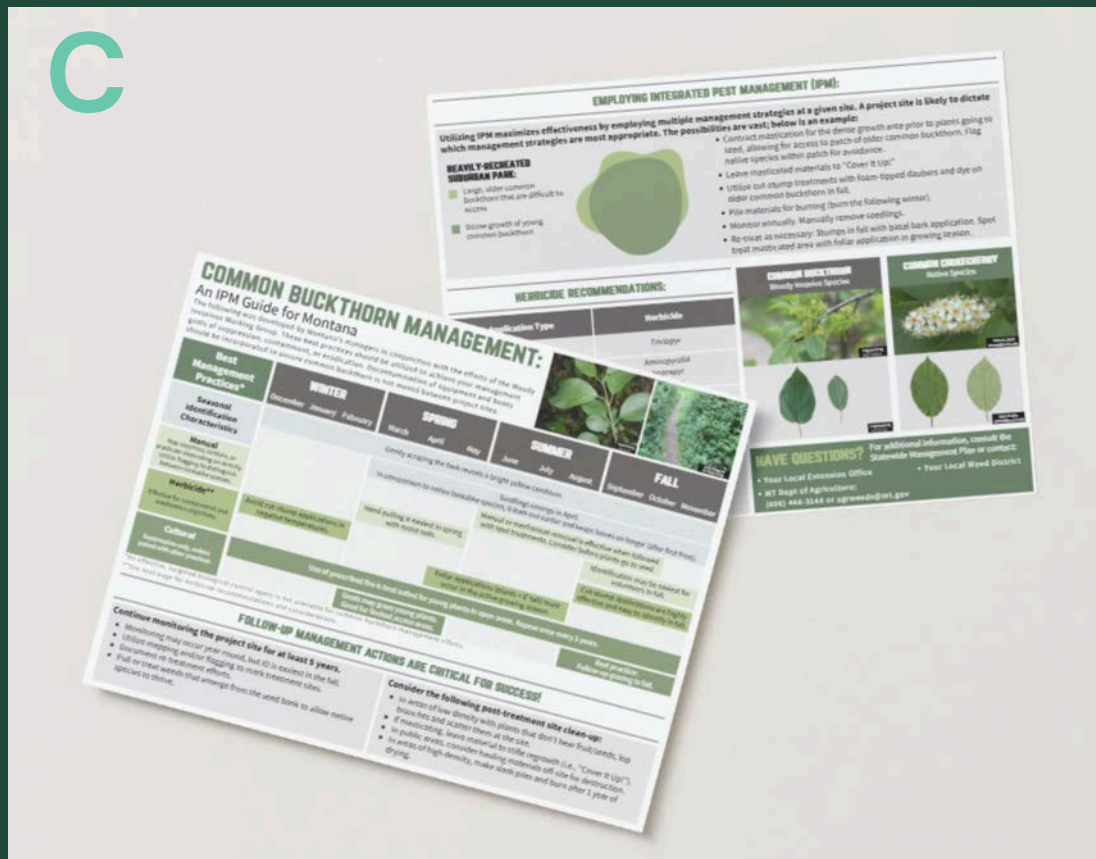
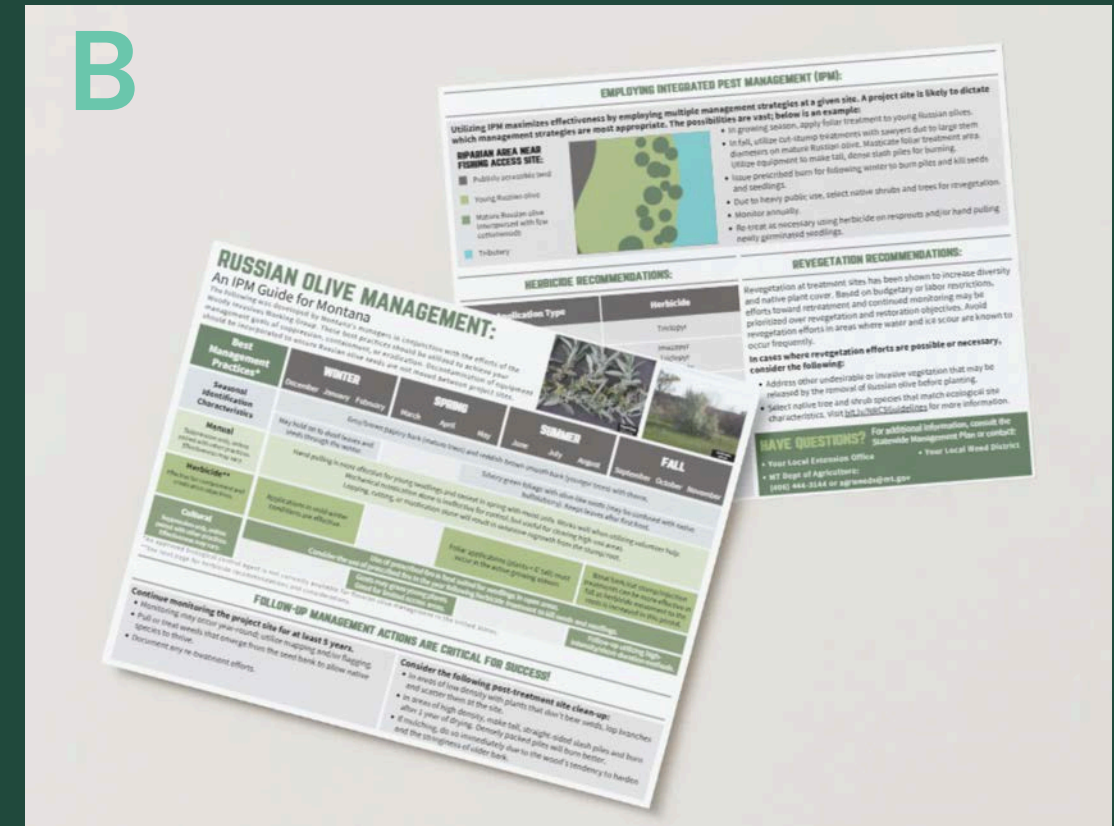
PRINT MATERIALS

A) ID Tri-Fold Brochure

B) Russian Olive IPM Guide

C) Common Buckthorn IPM Guide

D) Saltcedar IPM Guide



Available online at woodyinvasives.mt.gov:



NOV. 2025

RELEASED THE MANAGEMENT PLAN
FOR PUBLIC COMMENT

FINAL DRAFT INCOMING

Available online at
woodyinvasives.mt.gov:



01 EXECUTIVE SUMMARY

Woody invasives—comprising trees and shrubs from both coniferous and deciduous groups—are increasingly recognized as some of the most harmful species worldwide.

Their presence not only disrupts biodiversity but also leads to habitat degradation, impacts on native species, and changes to critical environmental processes. In Montana, riparian areas are particularly vulnerable to these invasions, where they have been shown to increase soil erosion, exacerbate river channelization, and reduce water access and biomass production for grazers, resulting in significant ecological and economic consequences.

The Woody Invasive Statewide Management Plan is a collaborative document designed for landowners and woody invasive managers in Montana, including state, federal, county, and private stakeholders. The purpose of this plan is to identify management priorities, summarize treatment and removal best practices, and outline short- and long-term implementation objectives for three focal species in Montana: common buckthorn (*Rhamnus cathartica*), Russian olive (*Elaeagnus angustifolia*), and the resident saltcedar complex (*Tamarix chinensis*, *T. ramosissima*, and all associated hybrids). This plan addresses the following statewide goals and objectives for woody invasive management in Montana (see *Goals and Objectives* in the Introduction for more details).

Given the urgency of addressing woody invasive species, stakeholders in Montana must collaborate to accomplish the goals and objectives outlined in this plan. Continued efforts in education, resource allocation, and collaborative planning will be vital in achieving long-term success in woody invasive management. Successful woody invasive management will not only protect Montana's riparian corridors but also sustain the state's diverse agricultural and recreational landscapes for generations to come.

Oversight and Coordination

- Ensure ongoing coordination of the Working Group
- Oversee the implementation strategy set forth within this plan

Funding

- Secure long-term, reliable funding

Mapping and Monitoring

- Compile comprehensive range data for woody invasive species

Outreach and Education

- Focus public outreach on reporting and prevention
- Provide educational resources to landowners and resource managers on best management practices

Long-term Control

- Implement landscape scale management
- Work towards eradication

WHAT NOW?

1

LETTING THE MANAGEMENT PLAN
LEAD OUR EFFORTS

2

RELEASING THE IMPACT STUDY

3

SEEKING FUNDING

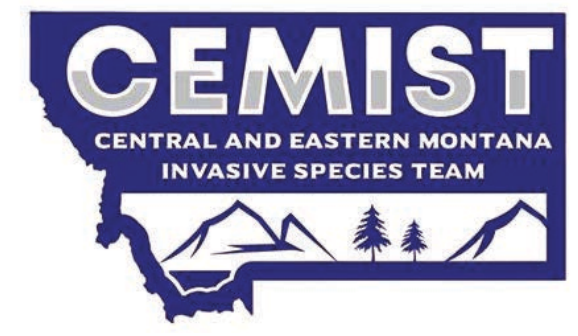
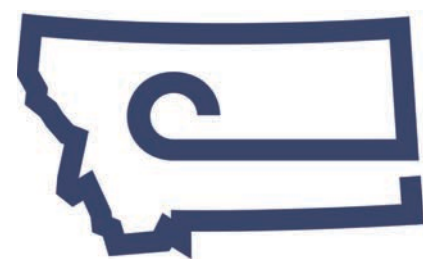
4

RIVER TOUR FOR
DECISIONMAKERS

5

CONTINUING TO MEET TO
HELP EACH OTHER!

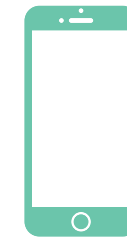
Thank you!



CONTACT INFORMATION:



sara@stopais.org



(785) 207-7624



(406) 222-7270



www.stopais.org



OUR TEAM



SARA RICKLEFS
Executive Director



JENNIFER RIDDLE
Programs Manager



ERIN BJORKLUND
Outreach Coordinator

ADVERTISING

REPORT WOODY INVASIVE SPECIES

MT needs your help

INVASIVE Common Buckthorn



NATIVE Chokecherry



REPORT WOODY INVASIVE SPECIES

MT needs your help

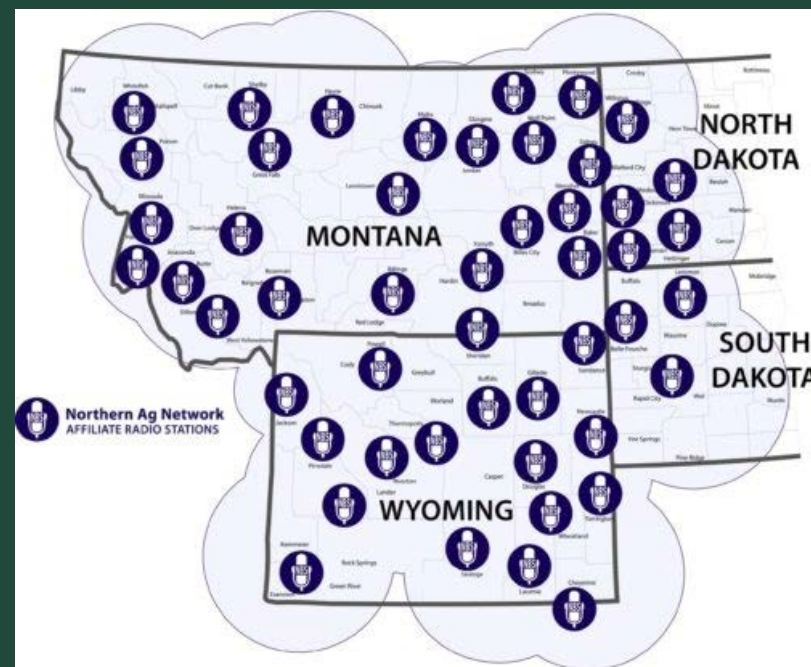
INVASIVE Common Buckthorn



NATIVE Chokecherry



Sponsored Content
Article



Methods:

- Radio
- Online
- Social Media
- Sponsored Content Article

Target Audience:

- Geography:
 - All of Montana
- Demographics:
 - 18+
- Interests:
 - Outdoor Recreation (*except surfing*)
 - Gardening
- Industries:
 - Agriculture
 - Real Estate

EDUCATION AND OUTREACH RESULTS

Campaign Element	Impressions
Social Media	65,910
Print Materials	2,650
Radio Ad	474,051
Sponsored Content Article	9,121
Online Targeted Ad	1,196,273
Total Impressions	1,748,005

WORKING GROUP MEETING TOPICS

- Management Plan Draft Outline
- UAV Herbicide Application
- Management Plan Lessons Learned
- Funding
- Education & Outreach
- Satellite Imagery Utility
- Russian Olive Public Perceptions
- Biocontrol Updates
- Planning the River Tour
- Impact Study Updates
- How to Facilitate Collaboration

SCIENCE ADVISORY PANELS

MANAGEMENT BEST PRACTICES

Nov 2023

Purpose:

- Better understanding of current and emerging management techniques
- Identify gaps and challenges that will impact managers.
- Discuss successes and challenges experienced within and outside the state's borders.

ECOLOGICAL/ECONOMIC IMPACTS

Oct 2024

Purpose:

- Comprehensive understanding of the potential impacts on natural resources and economy.
- Identify knowledge and research gaps that will impact managers.
- Discuss challenges experienced in impacts from woody invasive species and their management within and outside the state's borders.