

# Biocontrol in Action

**John Leary**

Restoration and GIS Project Manager

[jleary@riversedgewest.org](mailto:jleary@riversedgewest.org)

[tamariskbeetledata@riversedgewest.org](mailto:tamariskbeetledata@riversedgewest.org)

April 30-May 1, 2025

Phoenix, AZ



## RiversEdge West

RESTORE + CONNECT + INNOVATE



**RESTORE.  
CONNECT.  
INNOVATE.**



**RiversEdge West**

RESTORE + CONNECT + INNOVATE

### **OUR MISSION**

Restore riverside ecosystems (riparian lands) through education, collaboration and technical assistance.

### **OUR VISION**

We envision a network of healthy riparian ecosystems throughout the Western U.S.



## ***A little history...***

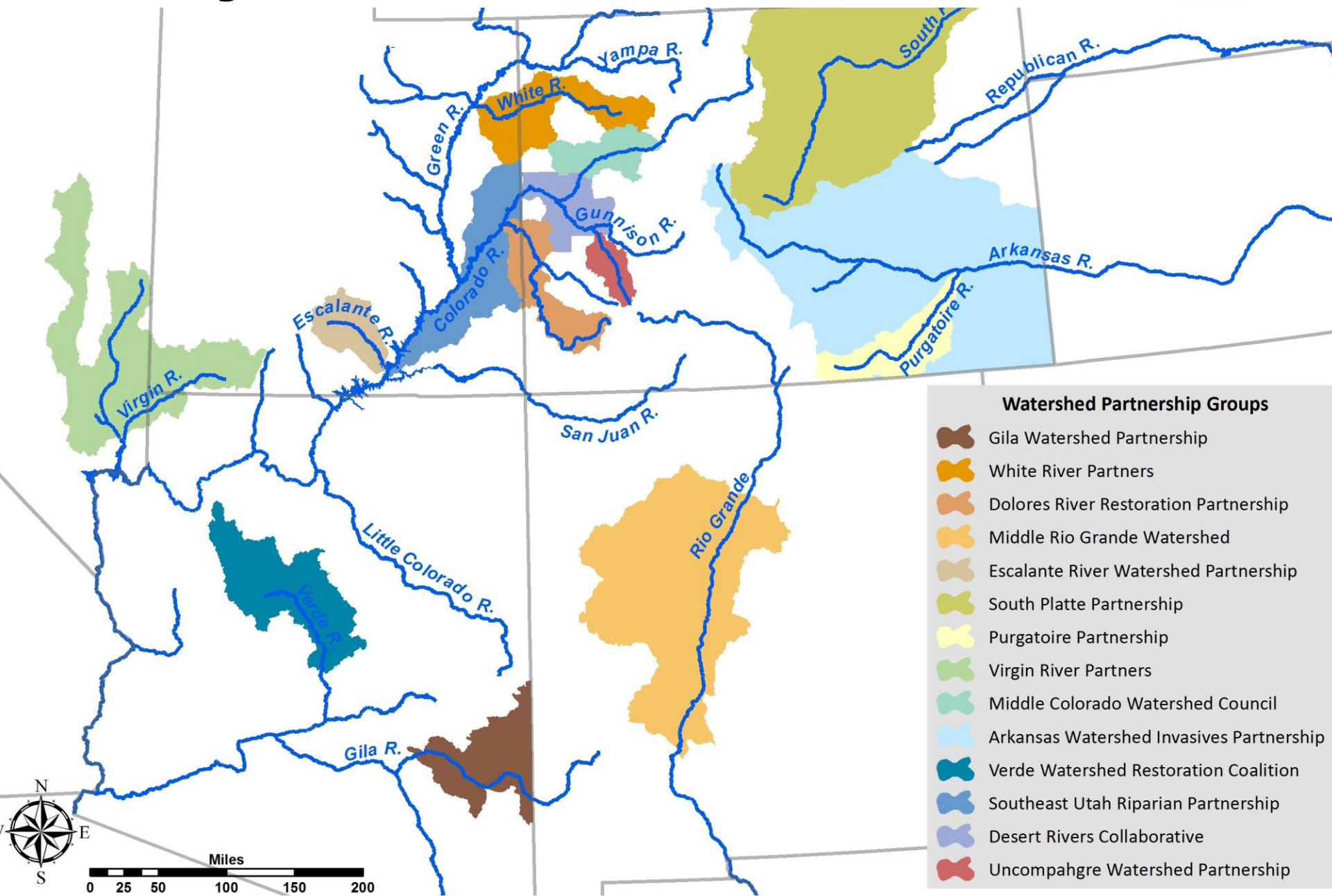
---

- RiversEdge West (formerly Tamarisk Coalition) began in the 1990's working on the Riverfront Trail Project in Mesa County.
- Incorporated in 2002, REW has been providing technical assistance and coordination support to restoration projects and partnerships.





# 20+ years of Collaboration





# What We Do



**Planning,  
fundraising  
& collaborating**



**Coordinating &  
advising invasive  
plant removal**



**Conducting &  
researching  
native plant  
restoration**



**Educating,  
monitoring & sharing  
lessons learned**



**Inspiring  
communities  
to be stewards of  
this work**





WHITE RIVER  
PARTNERSHIP



DESERT  
RIVERS  
COLLABORATIVE



DOLORES RIVER  
RESTORATION PARTNERSHIP

Private Lands





# Leading Restoration Partnerships

Bringing together land managers,  
landowners and communities to:



**Address  
common  
challenges**



**Build  
capacity**



**Leverage  
resources**



**Implement  
restoration**



**Promote  
stewardship and  
long-term success**





# Volunteer Stewardship: *RiversEdge Stewards*



- Supporting the ecological health of our local rivers and riverside habitat.
- RiversEdge West's Stewardship Program protects our initial investment in these projects and ensures long-term ecological health.

## West Slope Outdoor Volunteers

*A Regional Stewardship Collaborative*



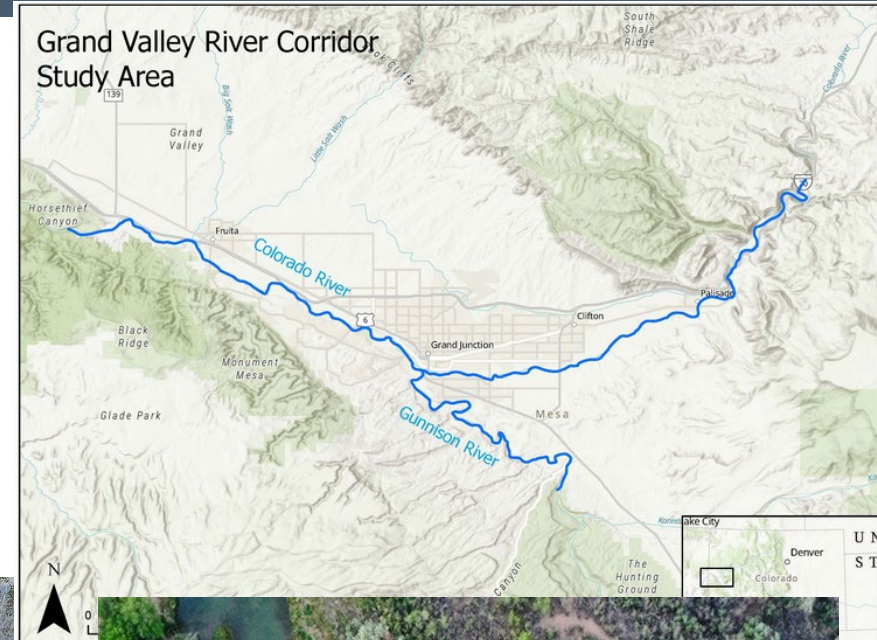




# River Corridor Initiative

Regional, collaborative planning effort and fluvial hazard zone mapping

Co-led by REW, Colorado Mesa University, American Rivers





WHITE RIVER  
PARTNERSHIP



DESERT  
RIVERS  
COLLABORATIVE



DOLORES RIVER  
RESTORATION PARTNERSHIP

Private Lands





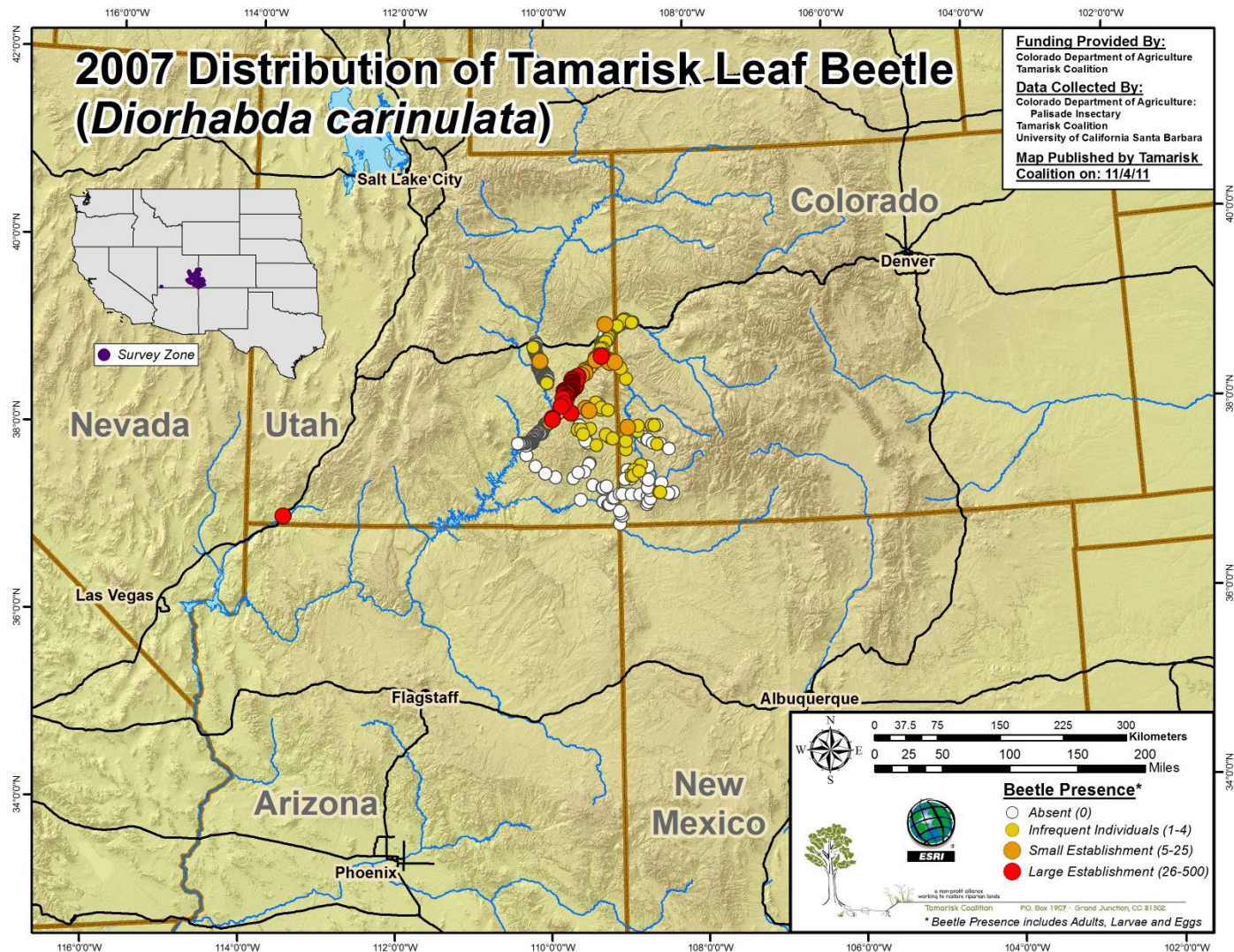
# Tamarisk Beetle Program

- **2001**-Tamarisk beetles released
- **2007-Present** RiversEdge West Beetle Program
  - Online resources
  - Workshops
  - Annual tamarisk beetle maps
    - Presence/Absence
    - 2007-2011 REW collected data
    - 2012-present partners provide data to REW

\*Riversedge West did not and does not release, provide, or transport tamarisk beetles



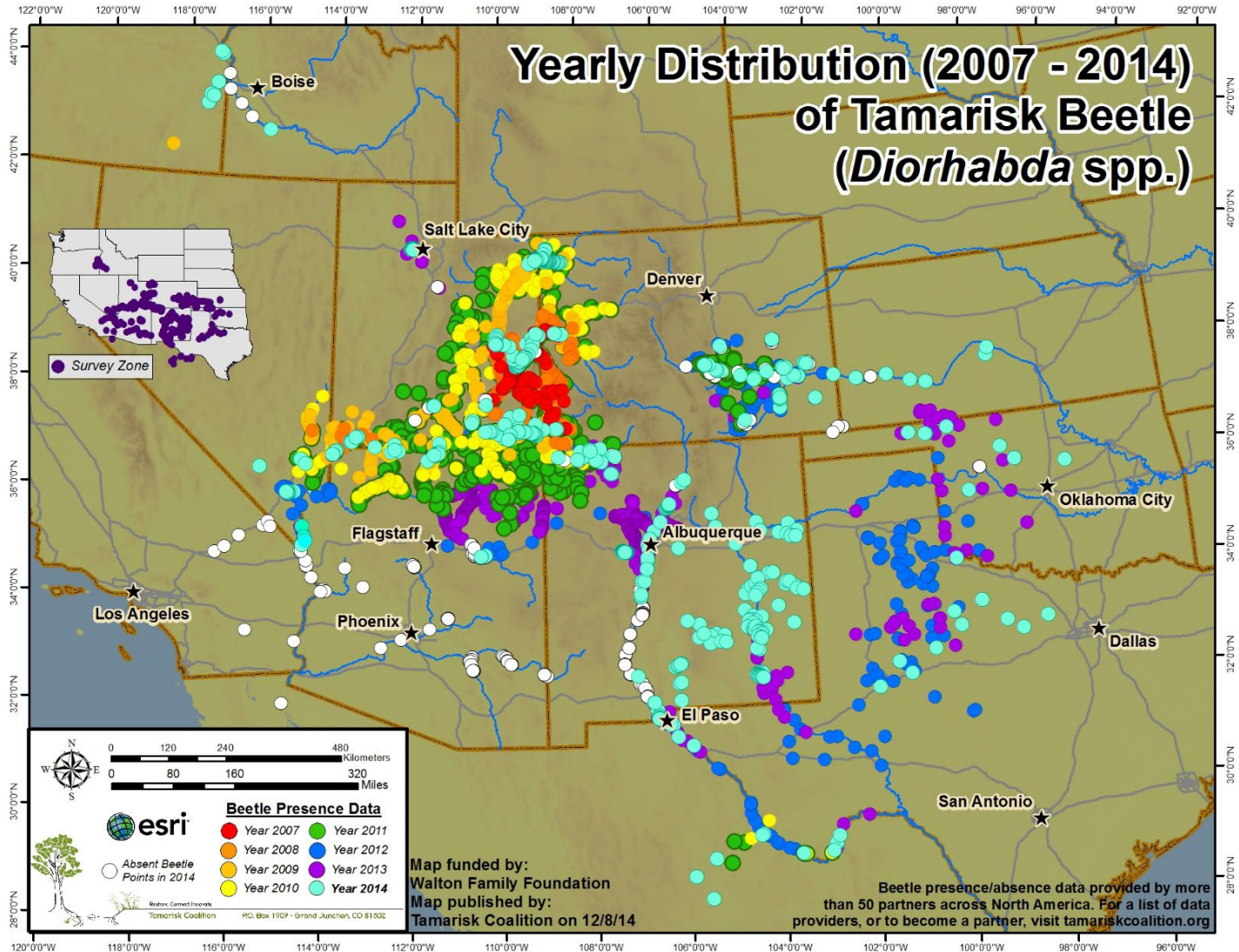
# Tamarisk Beetle Map

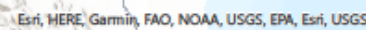






# Tamarisk Beetle Map



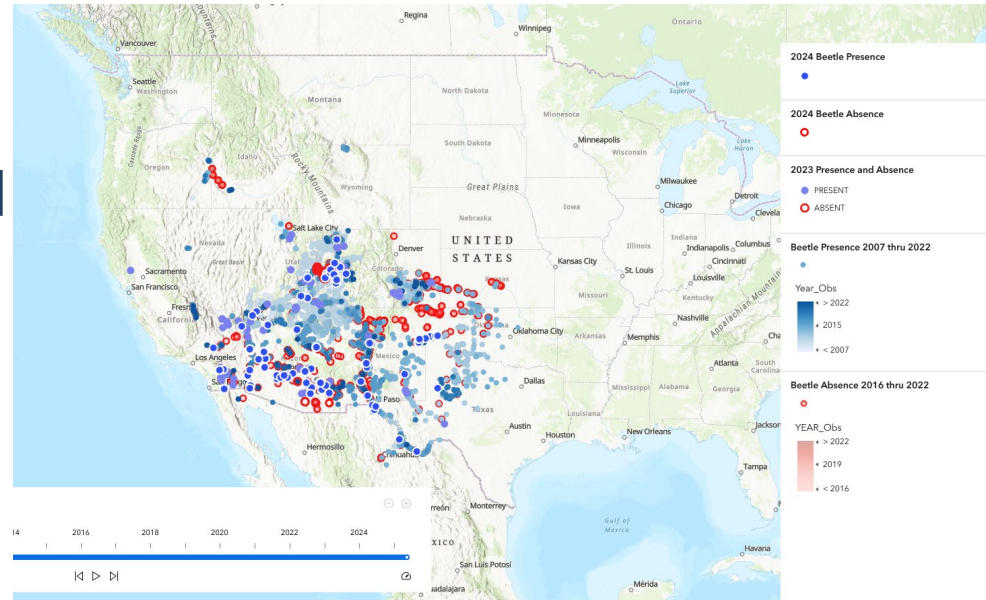






# Tamarisk Beetle Map

- 2024
  - 800 + views
  - 500+ observations submitted
- 2023
  - 2,800 + views
- Research
  - ["Evaluating the Influence of Biocontrol Program on the Colorado River Biodiversity with Multi-Source Time Series Imagery."](#) (Yilun Zhao)
- Outreach and awareness





# Tamarisk Beetle Map

- “They are everywhere”
- Thoroughness of data (pres/absence based on reports)
- Meeting different research/management/interest needs
  - Location
    - Movement, climate change
    - SWFL and other wildlife habitat impacts
    - More detail on smaller areas (eg reach scale, river scale, dates)
    - Population sizes
  - Impacts (defoliation, mortality, native vegetation regrowth)





# Tamarisk Beetle Map

## Potential direction(s)

- Continue as is
- Add additional optional GIS data fields for more detail
- Partnering programs
  - “Beetle blitz”
  - Summer student programs
- Outreach and awareness
- Focus areas eg
  - REW partnerships
  - New/establishing areas
  - Interest areas (eg Phoenix area?)



# Tamarisk Beetle Map

## 2024 Beetle Map



<https://arcg.is/1imrPK0>

## Survey



<https://forms.gle/Da9psTjvLQpxdUQK8>



# Thank you!

Questions? Comments?

**John Leary**

Restoration and GIS Project Manager

[jleary@riversedgewest.org](mailto:jleary@riversedgewest.org)

[tamariskbeetledata@riversedgewest.org](mailto:tamariskbeetledata@riversedgewest.org)

April 30-May 1, 2025

Phoenix, AZ



## RiversEdge West

RESTORE + CONNECT + INNOVATE



- <https://riversedgewest.org/restoration-resources/applied-science>
- [Email: tamariskbeetledata@riversedgewest.org](mailto:tamariskbeetledata@riversedgewest.org)
- <https://riversedgewest.org/about/learn/what-tamarisk-beetle>



