



WHITE RIVER

PARTNERSHIP

February 2, 2022

10:30-12:00



Agenda

Objectives:

- Share and discuss
 - 2022 riparian restoration project implementation
 - Planning and assessment updates
- Upcoming project opportunities and ideas
- Identify information gaps for project prioritization and planning

10:30 Welcome, Introductions, and Agenda (John, RiversEdge West)

10:40 2022 Riparian Restoration Implementation

- Colorado (John)
- Utah (Jerrad, BLM Vernal Field Office)

11:00 Lower White River (UT) Conservation, Restoration and Monitoring Plan (Wally, Utah State University)

11:15 White River (CO) Integrated Water Initiative and Riparian Assessments (Callie, White River and Douglas Creek Conservation Districts)

11:30 Upcoming projects, opportunities, ideas, and interests (John/all)

11:40 Information gaps and needs/interests (John/all)

- Potential ideas:
 - Riparian Vegetation Mapping
 - Tamarisk beetle presence or tamarisk beetle impact monitoring
 - Site Prioritization
 - Other ideas?

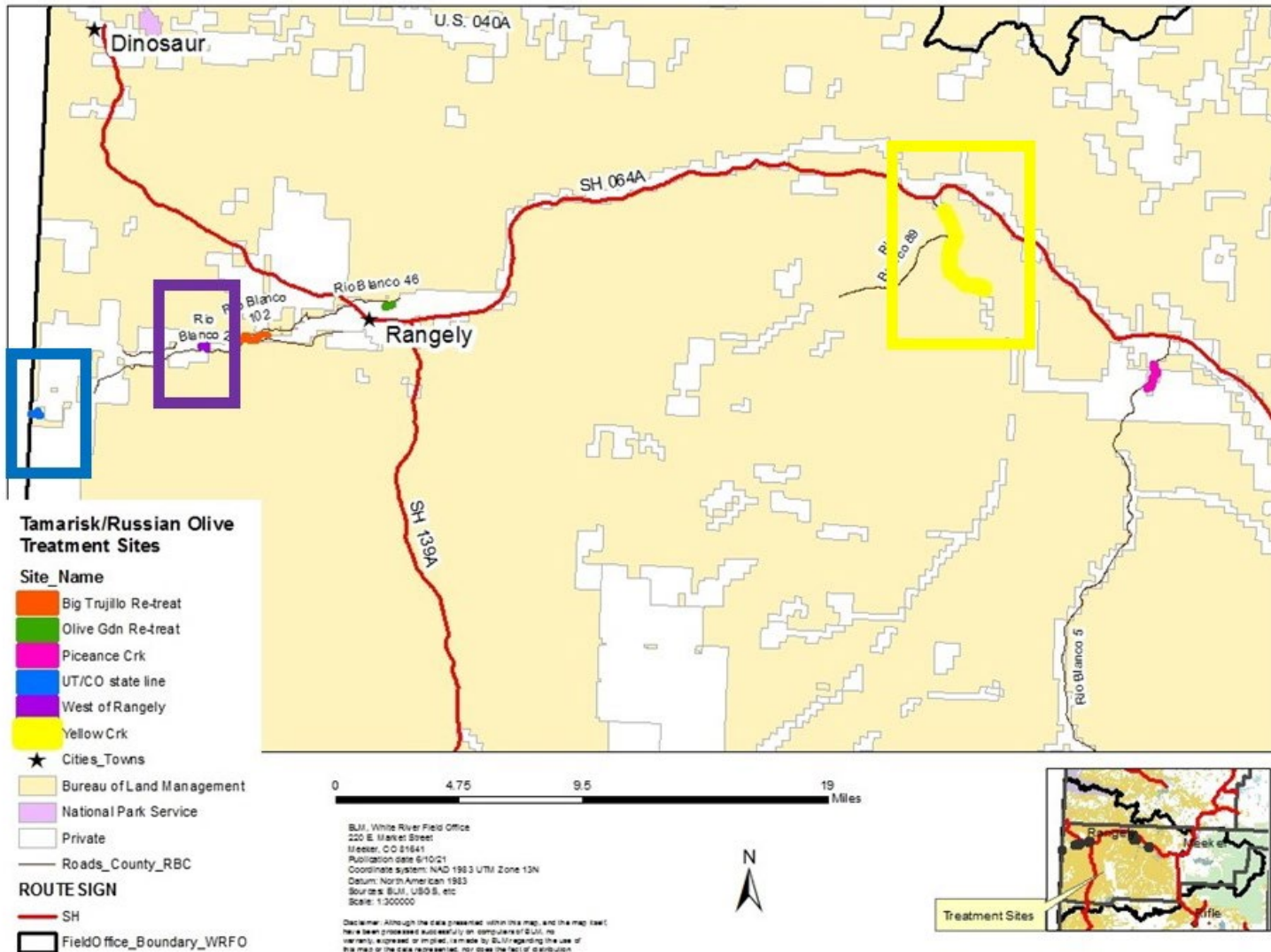
11:50 Additional Comments/Updates

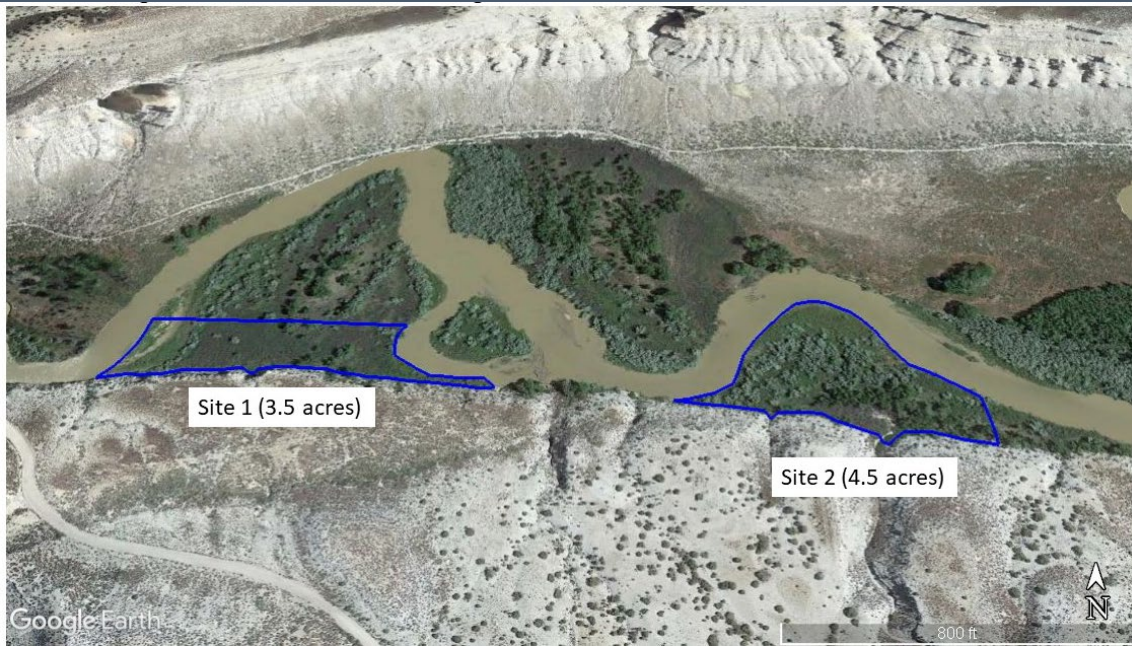
12:00 Adjourn



Colorado Implementation

Tamarisk / Russian Olive Treatment Sites









<https://extension.psu.edu/using-hack-and-squirt-herbicide-applications-to-control-unwanted-trees>



Colorado Implementation

2022 Crew Dates

Western Colorado Conservation Corps

<https://www.wcccpartners.org/>

- April 11-14
- April 18-21
- April 25-28
- May 2-5
- Sept 6-9
- Sept 12-15
- Sept 19-22



Project interest and ideas

- River access points
- Site Visit
- ?



Information gaps and needs

- Site prioritization
- Riparian Vegetation Mapping
- Tamarisk beetle monitoring



Comments/Updates

- USFWS private lands funding-Bob Timberman
 - https://riversedgewest.org/sites/default/files/files/PFW_BobTimbermanHandout.pdf



**RIVERSEGE WEST'S
20TH ANNUAL CONFERENCE**

20/20 VISION

LEARNING FROM THE LAST 20 YEARS; PLANNING FOR THE NEXT

FEBRUARY 23-25, 2022

GRAND JUNCTION CONVENTION CENTER • GRAND JUNCTION, CO



<https://riversedgewest.org/events/2022-conference>