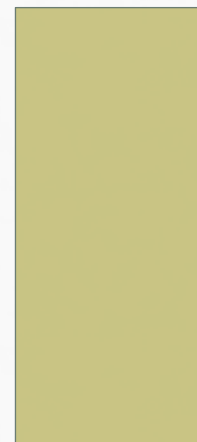




# DESERT RIVERS COLLABORATIVE MEETING

DECEMBER 13, 2018



# MEETING OBJECTIVES

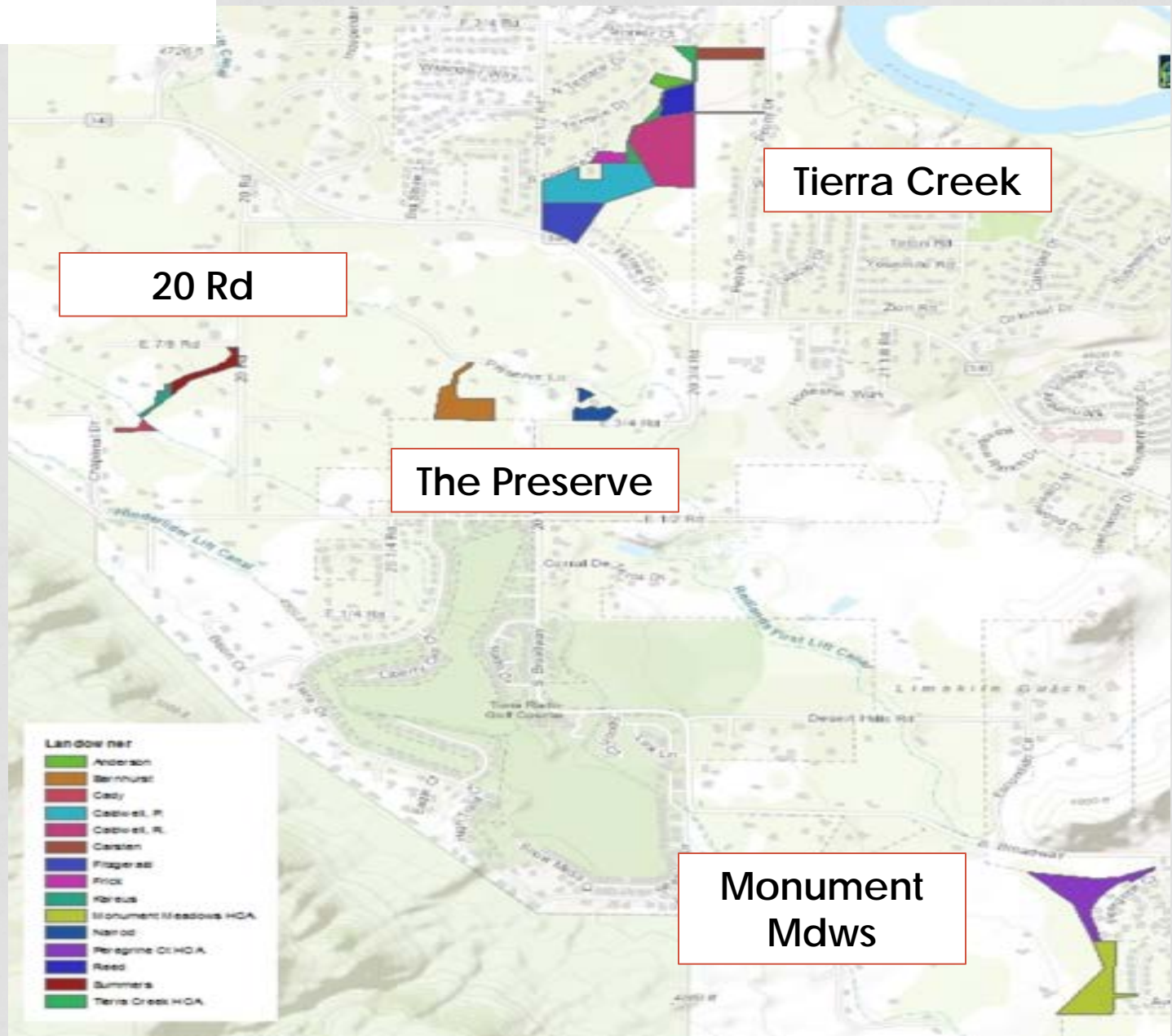
- Learn/discuss:
  - DRC projects and partnership opportunities
  - Wildfire Council of Mesa County and how to get involved
  - How best to work in Western Yellow Billed Cuckoo habitat
  - Geodatabase
  - Funding and volunteer opportunities
  - Next steps to fill identified gaps



# AGENDA

- **Introductions**
  - **Project updates**
- Wildfire Council of Mesa County
- US FWS Update
- Geodatabase Update
- Budget Overview, Grants, and Program Needs

# PRIVATE LANDS WORKS





# TIERRA CREEK - CALDWELL





# TIERRA CREEK - REED





# MONUMENT MEADOWS



# MOUNTAIN ISLAND RANCH

- Little Dolores River
  - May 7-10<sup>th</sup>
  - 6 acres of Russian olive treatment
  - 200 native plants purchased
  - <https://vimeo.com/271013172/a5decfb79f>





# MAINTENANCE

- Strike team crew in partnership with WCCC
  - Mesa County
  - Private lands
  - US Bureau Reclamation
    - Horsethief SWA
    - Cameo
  - CO Parks & Wildlife
    - Connected Lakes
  - Audubon Nature Preserve





# VOLUNTEER PROJECTS





# VOLUNTEER PROJECTS



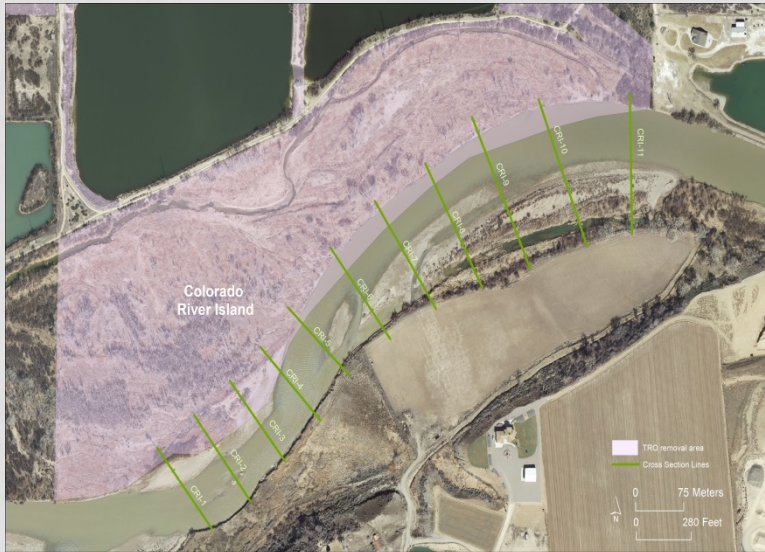
# WETLAND ECOLOGY & MANAGEMENT CLASS



- Outside instructors; coordinated by USBR
- 20 participants
- Visited several wetland sites in Valley
- Learn how to improve wetland management



# GEOMORPHIC MONITORING



- Finished geomorphic monitoring work w CMU
  - Walter Walker
  - Colorado River Island
  - Franklin Island

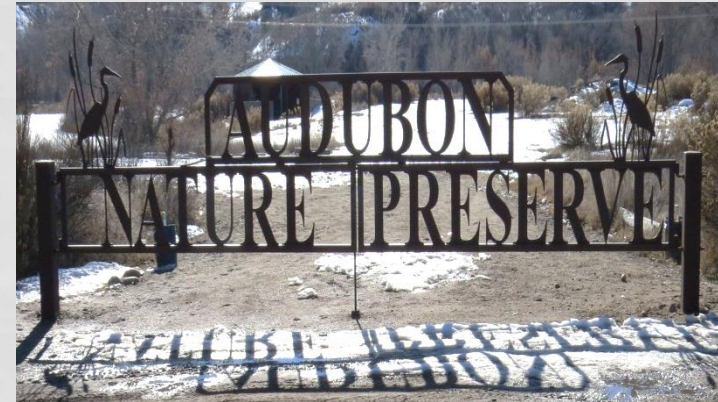
# GEOMORPHIC MONITORING

- Channel change and bank erosion occur along this reach of river regardless of vegetation removal efforts
- Increased channel change and bank erosion are correlated with high flow events.



# GRAND VALLEY AUDUBON HABITAT RESTORATION & WETLANDS IMPROVEMENT PROJECT

- Audubon Nature
  - Adjacent to Connected Lakes State Park
- Working with Ducks Unlimited
- Main funding= CPW Wetlands for Wildlife Grant
- Invasive removal and native reveg. in riparian forest
- Re-contouring old gravel pit ponds to create more productive shallow water wetlands.





# REVEGETATION TECHNIQUES

- Planted 50 native shrubs and 9 trees in late April
  - Shrubs: NM privet, 3 leaf sumac, golden currant, Woods' rose, silver buffaloberry
  - Trees: hackberry, box elder, river birch, cottonwood
- Barrels with water piped to roots for trees (except for cottonwoods)
- Used Ollas to water shrubs
- Filled barrels, ollas about 1x week





# OLLAS





# SUCCESS RATE

- 7 out of 9 trees survived.
  - Smaller cottonwoods failed; they got less water and water applied to surface, not roots
- 50 native shrubs planted with ollas.
  - 2 shrubs lost and didn't get watered.
- Of 48 shrubs tracked, 39 survived, 4 were "not dead yet!" but were on their way, 5 were dead like door nails. (As of mid-Sept.)
- **81% survival rate** after scorching summer.



*Golden currant  
Sept 14, 2018*

# AGENDA

- Introductions
  - Project updates
- **Wildfire Council of Mesa County**
- US FWS Update
- Geodatabase Update
- Budget Overview, Grants, and Program Needs

# WILDFIRE COALITION OF MESA COUNTY

- Formed about 1-year ago
  - Monument Meadows HOA work spurred conversation
  - Overlap between many partners
- 2019-2020
  - Education & outreach
  - 1-2 on-the-ground projects
  - Wildfire Conference





# WILDFIRE COALITION OF MESA COUNTY

- 80 acres of riparian habitat burned in 2018 alone
  - Skippers Island
  - Island Acres

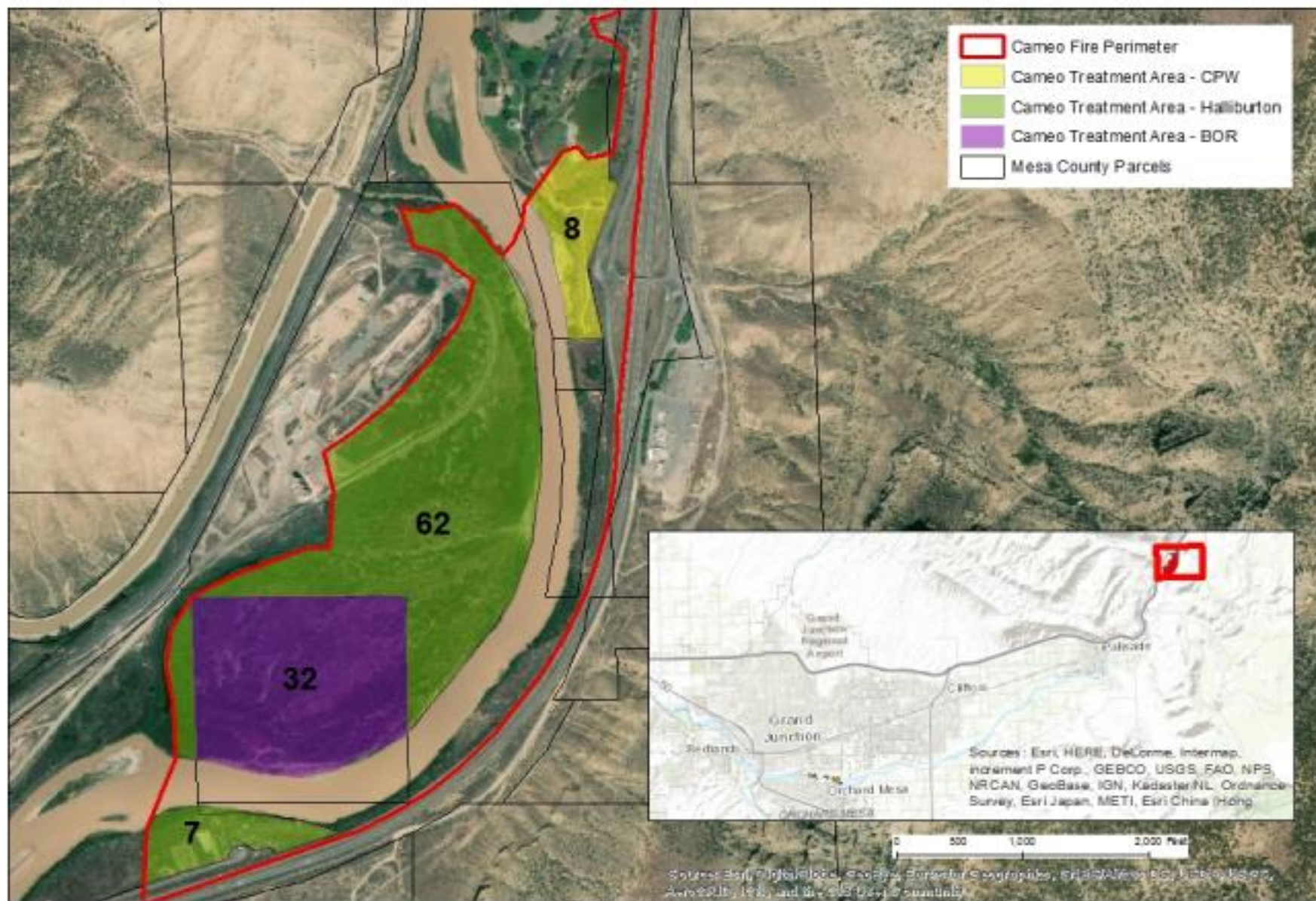


# CWCB GRANT

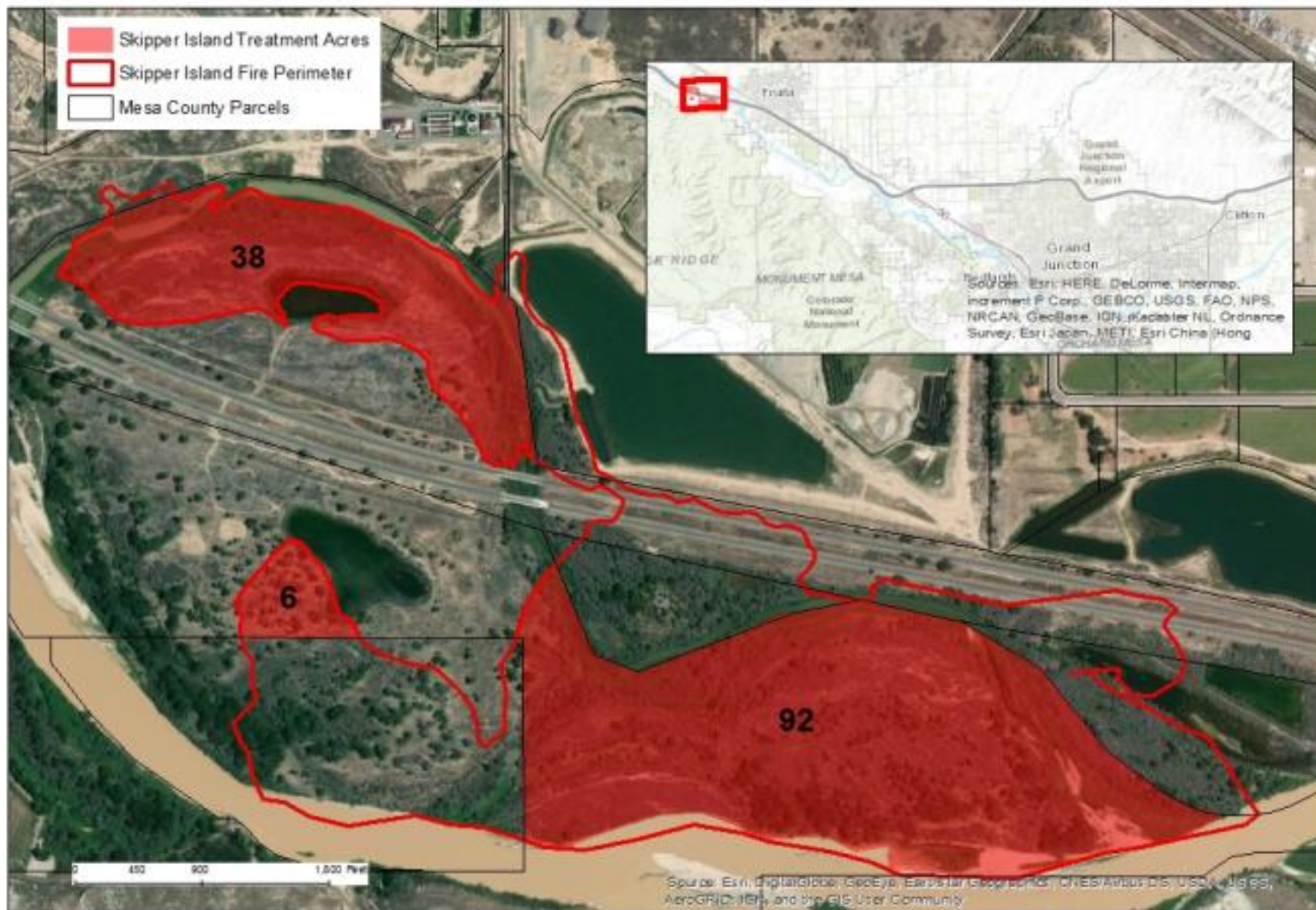
- Applied for CWCB Watershed Restoration grant to help with reclamation
  - \$47,835 request
  - Partners
    - Colorado Parks & Wildlife
    - US Bureau of Reclamation
    - Colorado State Forest Service
    - Mesa County
    - Colorado State University Ext.
    - Natural Resources Conservation Service
    - Halliburton
    - Grand Valley Water Users Association















# AGENDA

- Introductions
  - Project updates
- Wildfire Council of Mesa County
- **US FWS Update**
- Geodatabase Update
- Budget Overview, Grants, and Program Needs



# AGENDA


- Introductions
  - Project updates
- Wildfire Council of Mesa County
- US FWS Update
- **Geodatabase Update**
- Budget Overview, Grants, and Program Needs

# DRC GEODATABASE

- <http://arcg.is/1fGvyu>

Home ▾ Desert Rivers Collaborative Geodatabase 

 Details  Add ▾  Edit  Basemap  Analysis  Save ▾  Share  Print ▾  D

 About  Content  Legend ▾

Contents

- ☒ Invasives Treatment
- ☒ Planned Treatments
- ☒ Active Revegetation
- ☒ DRC Monitoring 2018
- ☐ Mesa County Parcels (Clipped)
- ☐ Invasive Species Inventory
- ☐ Reporting Segments
- ☐ Riparian Corridor



(4 of 4)

Active\_Revegetation: 2018

Year_	2018
Segment_ID	
Riparian_Veg_ID	
Inventory_ID	
Treatment_ID	
Species_1	Hackberry
Species_2	Box elder
Species_3	Cottonwood
Species_4	River birch
Type	SAPLING
Amount	

Amount Unit  
[Zoom to](#) [Edit](#) [Get Directions](#)



# AGENDA

- Introductions
  - Project updates
- Wildfire Council of Mesa County
- US FWS Update
- Geodatabase Update
- **Budget Overview, Grants, and Program Needs**

## 2019 Income

### RiversEdge West

		Amount		
Applicant	Source	Total	Capacity/ Planning /Education	2019 Project Work
DRC	2018 ROR funding carryover	\$ 41,000.00	\$ 41,000.00	\$ -
REW	2018 Xcel Energy carryover	\$ 10,000.00	\$ 10,000.00	\$ -
REW	Alpine Bank	\$ 1,500.00	\$ 1,500.00	\$ -
REW	GVWUA	\$ 1,000.00	\$ 1,000.00	\$ -
Total Secured		\$ 53,500.00	\$ 53,500.00	
REW	CWCB - Watershed Restoration	\$ 47,835.00	\$ 6,814.00	\$ 41,021.00
REW	GOCO Inspire Initiative	\$ 36,000.00	\$ 16,000.00	\$ 20,000.00
REW	Patagonia	\$ 5,000.00	\$ 1,000.00	\$ 4,000.00
REW	Xcel	\$ 20,000.00	\$ 20,000.00	\$ -
REW	Goodwin Fdn	\$ 15,000.00	\$ 15,000.00	\$ -
Total Pending		\$ 123,835.00	\$ 58,814.00	\$ 65,021.00

### 2019 Partner Grants & Match

Applicant	Source	Total	Capacity/ Planning /Education	Project Work
Mesa County	CDA	\$ 25,000.00		\$ 25,000.00
Grand Valley Audubon Society	CPW - Wetland for Wildlife Grant	\$ 31,000.00	\$ 6,000.00	\$ 25,000.00
City of Grand Junction	CWCB (Water Plan Grant, Basin RT, and redirect from previous CWCB grant)	\$ 259,000.00		\$ 259,000.00
City of Grand Junction	Great Outdoors CO	\$ 125,000.00		\$ 125,000.00
Total Secured or Pending		\$ 440,000.00	\$ 6,000.00	\$ 434,000.00

### 2019 Expenses/Income

2019 Income	\$ 53,500.00
2019 Expenses	\$ 56,390.00
Difference	\$ (2,890.00)

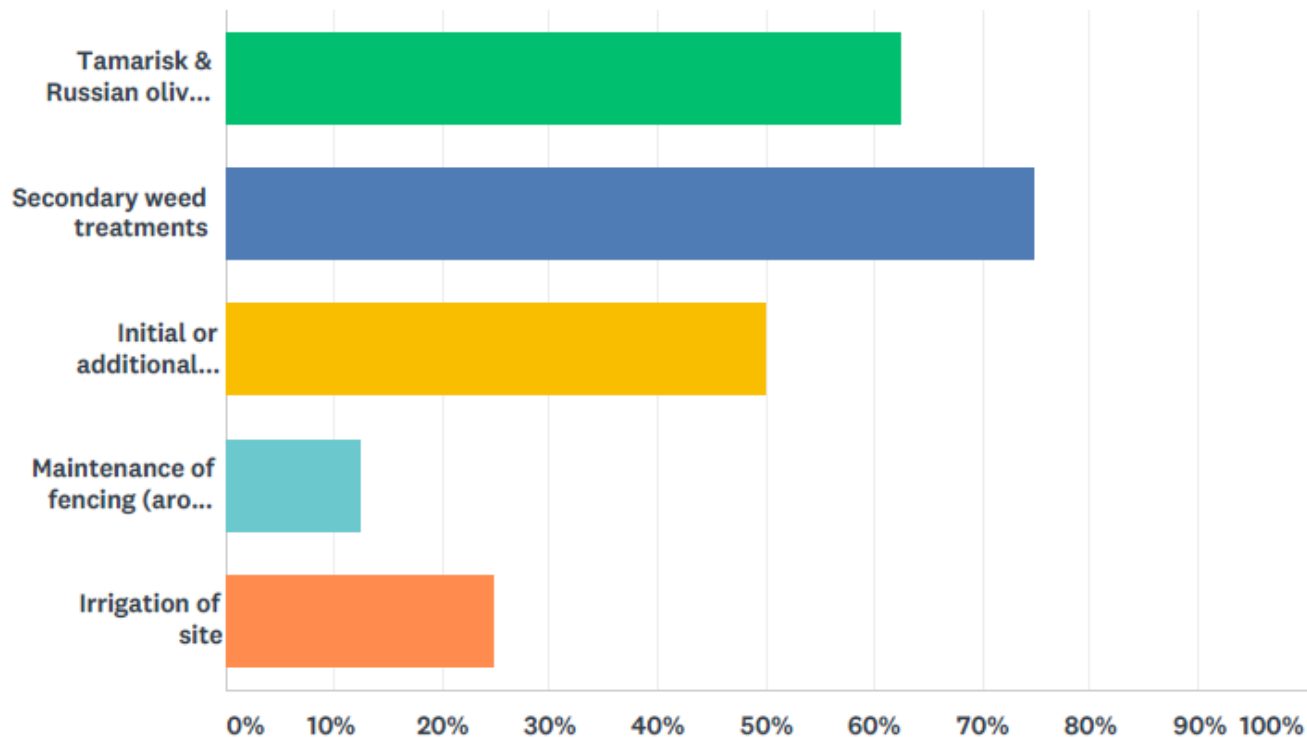


# PROGRAM NEEDS

[HTTPS://WWW.SURVEYMONKEY.COM/STORIES/SM-7FLSJKC8/](https://www.surveymonkey.com/stories/SM-7FLSJKC8/)

Q1 What are your biggest site/project maintenance needs (select as many options as you need)?

Answered: 8 Skipped: 0



# PROGRAM NEEDS

**Are there specific sites that are especially problematic? If so, what makes these specific sites problematic?**

Answered: 6 Skipped: 2

Upland sites with poor soil or heavy secondary weed infestation. Establishing reliable irrigation further complicates efforts.

Rivers Edge with the Russian Olive

Area along the Riverfront Trail north of the Grand Avenue Bridge where the bank has just about totally eroded the land under the trail. In fact, we have moved the trail twice and now I am not sure if any additional land will be available. Hopefully, something can be done.

Sites with heavy cattle grazing pressure are where it is most difficult to establish desirable reclamation vegetation.

Some sites have been flooded by beaver

Along the riverfront trail and along the drainage ditch in Riverbend Park

**If you answered "yes" to Question 3, please provide more specifics on what you would need. For example, I would need 2 full-time crew members fo...**

Answered: 7 Skipped: 1

I would need two crew members for the duration of the growing season to assist with secondary weed control/TRO regrowth and irrigation. Typically requires two days per week so this could be a shared resource with other properties.

8 weeks in 2019 to work in the Gunnison River. Honor crew is at no cost and very cost effective.

Not sure

Time and Labor

More effective means to communicate with the leaseholders for public lands grazing, to negotiate grazing schedules that would be more amenable to reclamation goals.

Need to relocate the beaver

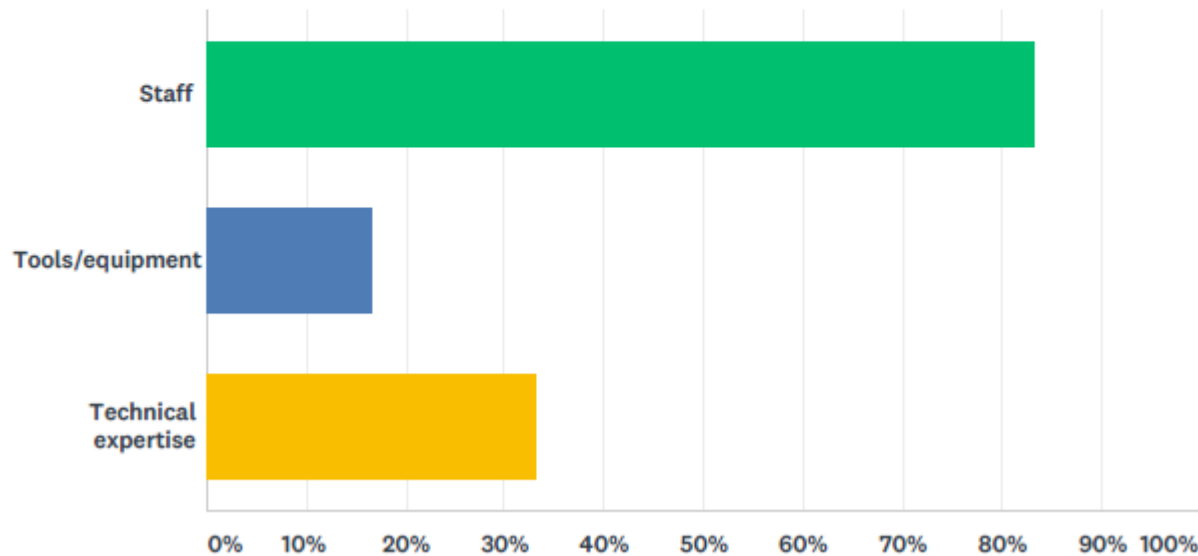
Any type of full time help in the summer would be very beneficial. Any time frame for that help would be great as well, whether it was one week or twelve. With 105 acres, there's more than enough there to do.



# PROGRAM NEEDS

Q5 Are you currently lacking any resources? If so, please select what you are lacking below.

Answered: 6 Skipped: 2



# PROGRAM NEEDS

## Do you have an interest in implementing/expanding a citizen science program?

...

Answered: 7 Skipped: 1

Soil conditions and suggested methodology to improve. Water quality analysis prior and subsequent to TRO removal. Water quality analysis prior to implementing irrigation.

funding for landowners

How can land be re-vegetated prior to erosion damage?

no

If it was related to birds, yes. But we already do a fair amount of citizen science

Yes, measuring selenium at our projects.

Hesitant. I've seen these types of commitments fade away very quickly

## Do you see opportunities for improving public education and outreach?

...

Answered: 5 Skipped: 3

Interpretive signage and media outreach.

Landowners workshops

If we could tie it in with National Audubon's Plants for Birds program- which encourages planting natives- that might be a good fit for us.

Yes, through the media, and schools/ college.

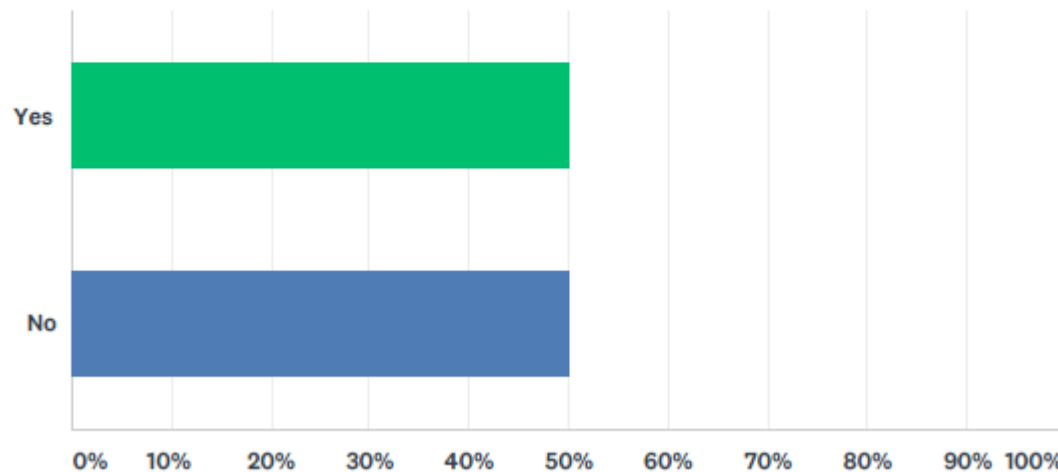
No. The public generally doesn't care.



# PROGRAM NEEDS

Q7 Would you be interested in helping to fund an inter-agency crew that can work across boundaries?

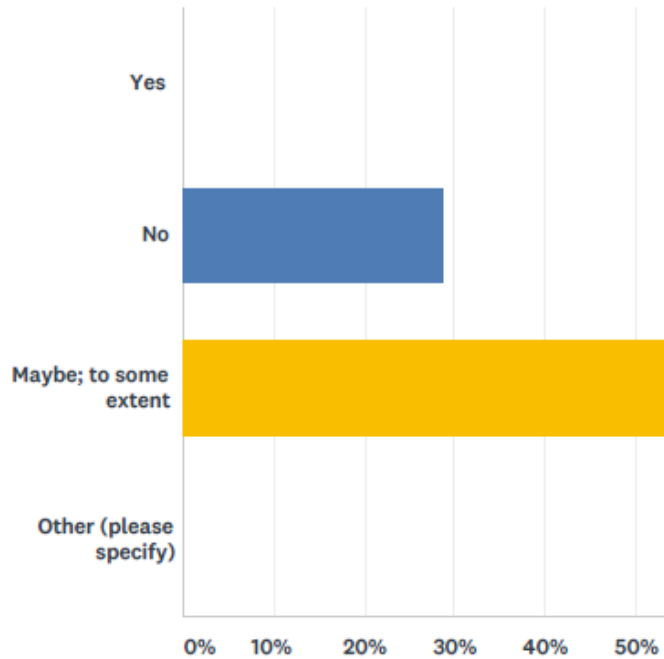
Answered: 4 Skipped: 4



# PROGRAM NEEDS

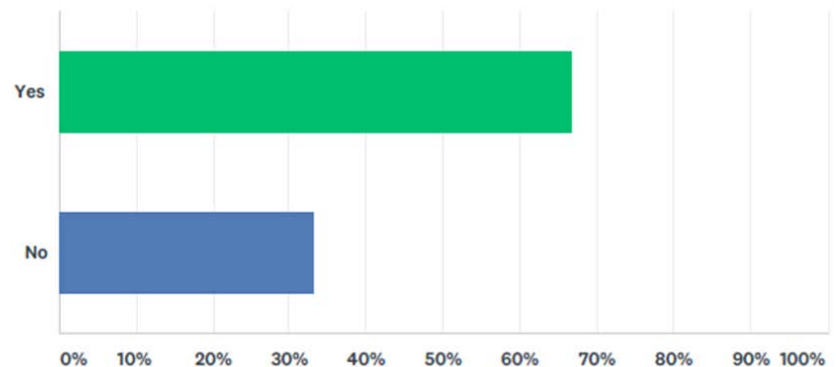
Q10 Would volunteer events help you meet your objectives?

Answered: 7 Skipped: 1



Q11 Do you have interest in hosting volunteer events?

Answered: 6 Skipped: 2

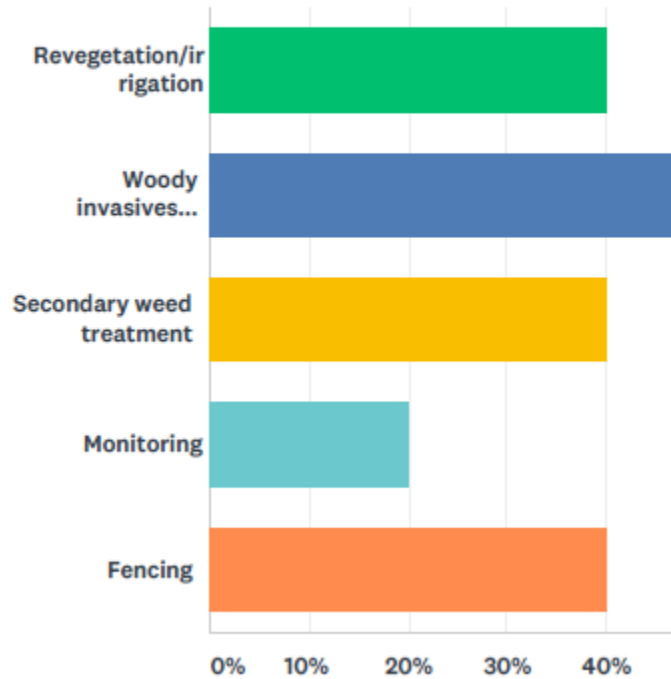




# PROGRAM NEEDS

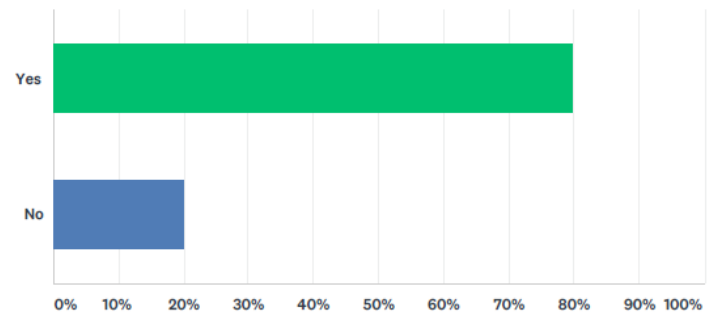
What sort of volunteer event would you be interested in hosting?

Answered: 5 Skipped: 3



If you answered "yes" to question 11, do you have the capacity to host a volunteer event?

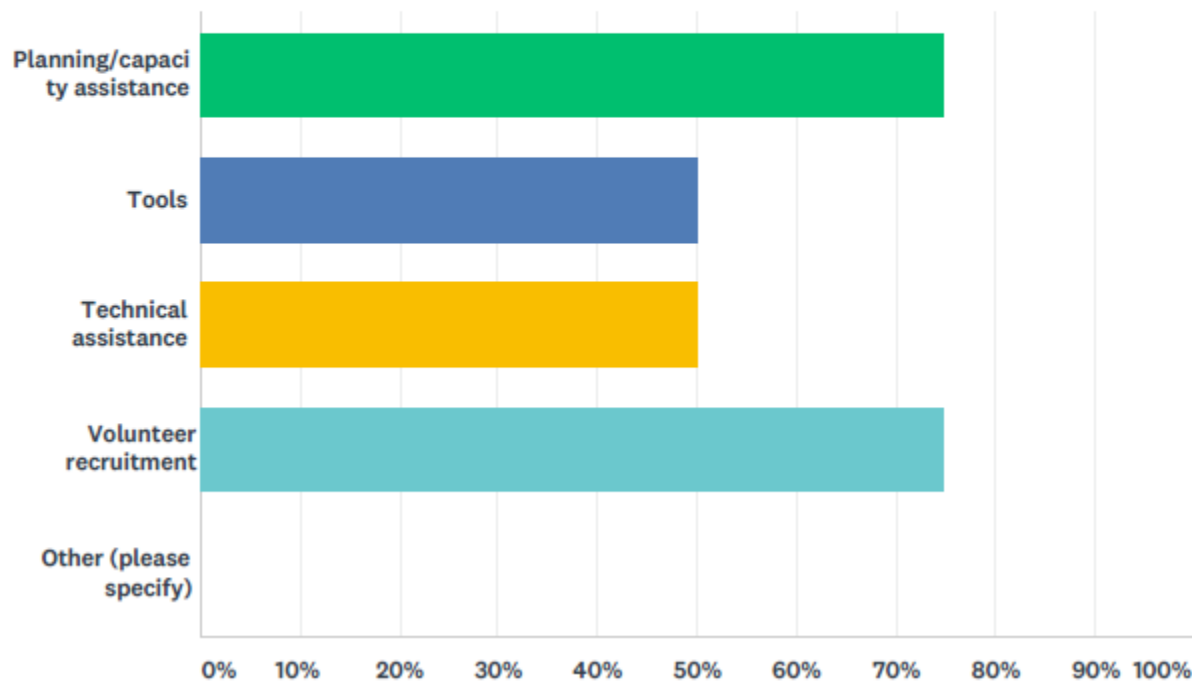
Answered: 5 Skipped: 3



# PROGRAM NEEDS

What other assistance would be helpful to successfully execute a volunteer event?

Answered: 4   Skipped: 4





# GRANT OPPORTUNITIES

- Statewide Stewardship Initiative
  - Request for DRC & Dolores River Restoration Partnership
  - Expand stewardship opportunities and build infrastructure
  - Grow community buy-in
- Noxious Weed Management Grant (Mesa County)
- [Environmental Justice Grant](#)



# NEXT STEPS

- How to meet program needs?
  - Working meetings to address?
- Next full partnership meeting?





# SAVE THE DATE

## RIPARIAN RESTORATION CONFERENCE



**RiversEdge West**

RESTORE + CONNECT + INNOVATE

**February 5-7, 2019**

**Desert Botanic Gardens  
Phoenix, Arizona**

**[www.RiversEdgeWest.org](http://www.RiversEdgeWest.org)**

**CONNECT.  
LEARN.  
BE INSPIRED.**